



1/2, 31 WHITEHAUGH ROAD

GLASGOW

www.corumproperty.co.uk



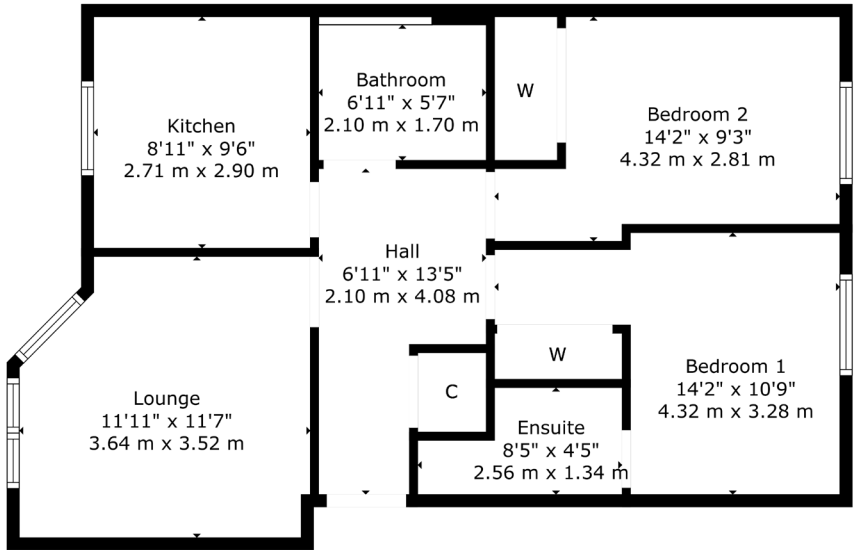
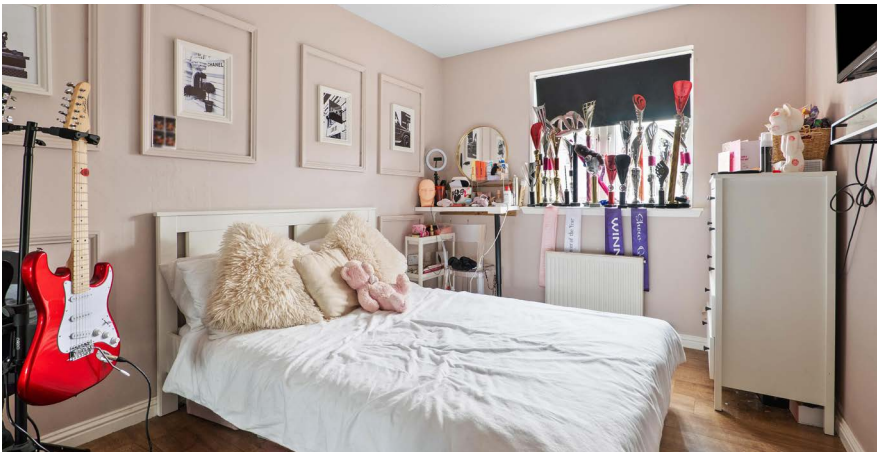
2 | BEDROOMS
2 | BATHROOMS
1 | PUBLIC ROOM

Located within the highly sought after Parklands Estate lies this impressive two bedroom apartment with open outlooks.

- Modern apartment set within a popular residential development.
- Two bedrooms
- First floor.
- Principal en-suite bedroom.
- Well presented throughout.
- Landscaped and mature rear gardens.

Amenities

The Parklands Estate is within close proximity to a full range of amenities, facilities, shops and popular schooling. There are excellent motorway networks to Glasgow and the Ayrshire coast and Silverburn shopping centre is just over 2 miles away. Just minutes from the A726 allowing access east to Paisley and north via the M77 to Glasgow City Centre. Edinburgh can be reached in little over an hour. Both Nitshill and Priesthill & Darnley Railway Stations offer regular and direct services to both Glasgow and Barrhead.



Sat Nav:
31 Whitehaugh Road, Glasgow, G53 7JQ

NM4554

*All measurements and distances are approximate.
Floorplans are for illustration purposes and may not be to scale.

For the full home report visit
www.corumproperty.co.uk



WE'RE **SOLD** ON
YOUR FUTURE



Corum Newton Mearns
134 Ayr Road, Newton Mearns, G77 6EG

Tel: 0141 639 5888

Email: n.mearns@corumproperty.co.uk

www.corumproperty.co.uk