



0/1, 10 PROSPECTHILL GROVE
LANGSIDE

www.corumproperty.co.uk



3 | BEDROOMS
2 | BATHROOMS
1 | PUBLIC ROOM

A substantial and easily accessible 3 bedroom ground floor apartment within the iconic Chroma Development in Langside.

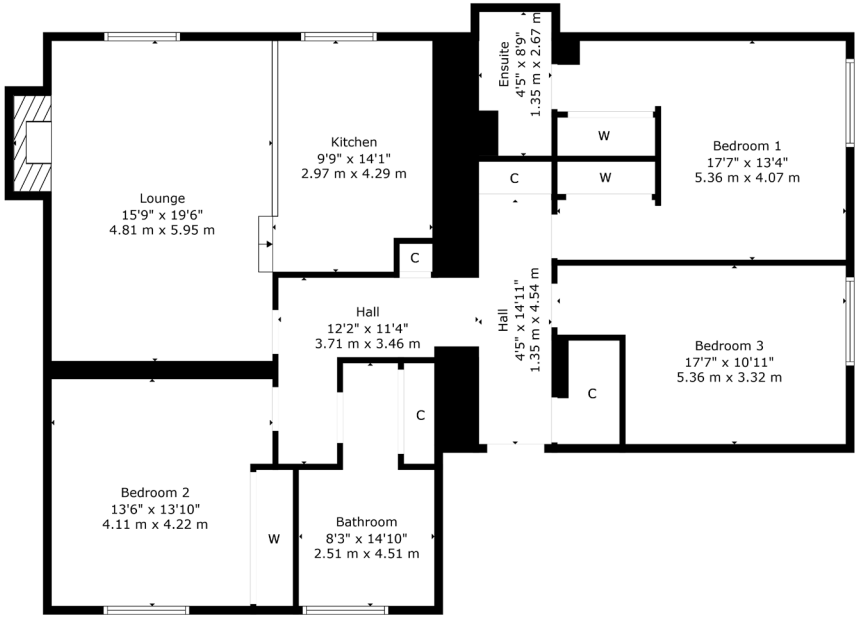
- Ground floor flat
- 3 double bedrooms, 2 bathrooms
- Large lounge semi open plan kitchen
- Gas central heating, double glazing, secure entry, allocated parking
- Fresh neutral decor throughout
- Public transport and shops close by

Amenities

The property is positioned within walking distance of shops and amenities upon Battlefield Road where thriving coffee shops, restaurants and delicatessens can be found. More extensive amenities are found in central Shawlands, at the Marks and Spencer's store, the Morrison's store at Crossmyloof, or the shopping mall at Silverburn Pollok, a short drive to the South West.

Recreational pursuits are varied in nearby Queen's Park which has nature walks/trails, all-weather football pitches and tennis courts.

Frequent public transport provides rapid commuter access to the city centre. The local railway station is less than 50 yards walk (Mount Florida).



Sat Nav:
10 Prospecthill Grove, Langside, G42 9LD

SS4971

*All measurements and distances are approximate.
Floorplans are for illustration purposes and may not be to scale.

For the full home report visit
www.corumproperty.co.uk



WE'RE **SOLD** ON
YOUR FUTURE



Corum Shawlands
247 Kilmarnock Road, Shawlands, G41 3JF

Tel: 0141 636 7588

Email: shawlands@corumproperty.co.uk

www.corumproperty.co.uk