



379 KILMARNOCK ROAD

NEWLANDS

www.corumproperty.co.uk



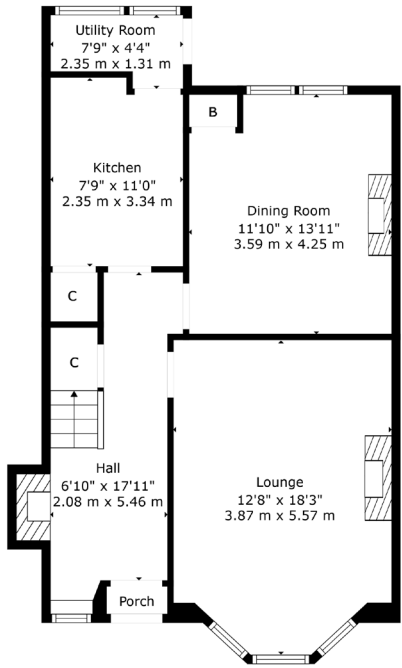
3 | BEDROOMS
1 | BATHROOM
2 | PUBLIC ROOMS

Positioned in an established site in the centre of Newlands this stone fronted home originally dates from the early 1900s. Whilst the property needs to be upgraded, it represents a terrific opportunity for buyers with foresight and an appetite for a project.

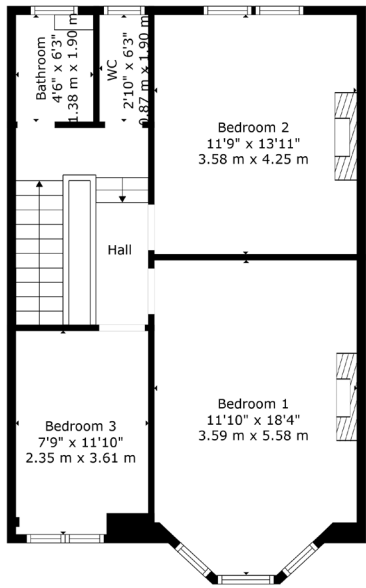
- Stone fronted mid terrace in Newlands
- Development potential subject to consent
- Three double sized bedrooms
- Gas fired central heating system
- Level & enclosed rear garden
- Only 300 yards to Newlands Park

Amenities

379 Kilmarnock Road is 300 yards from Newlands Park where the popular Dandelion Café is found together with a playpark and the Newlands Park Community tennis courts, opened in 2023. Amenities are available at the Morrisons store bordering Shawlands, the Sainsbury's store in Muirend or at the Silverburn shopping centre in Pollok. Reputable state schooling is available locally whilst there are a number of pick-up points within Newlands for some of Glasgow's leading independent schools. The closest train station is at Pollokshaws East which is on the Cathcart Circle line.



Ground Floor



1st Floor

Sat Nav:
379 Kilmarnock Road, Newlands, G43 2JA

SS4977

*All measurements and distances are approximate.
Floorplans are for illustration purposes and may not be to scale.

For the full home report visit
www.corumproperty.co.uk



WE'RE **SOLD** ON
YOUR FUTURE



Corum Shawlands
247 Kilmarnock Road, Shawlands, G41 3JF

Tel: 0141 636 7588

Email: shawlands@corumproperty.co.uk

www.corumproperty.co.uk