



1/1, 280 DARNLEY STREET

POLLOKSHIELDS

www.corumproperty.co.uk



2 | BEDROOMS
1 | BATHROOM
1 | PUBLIC ROOM

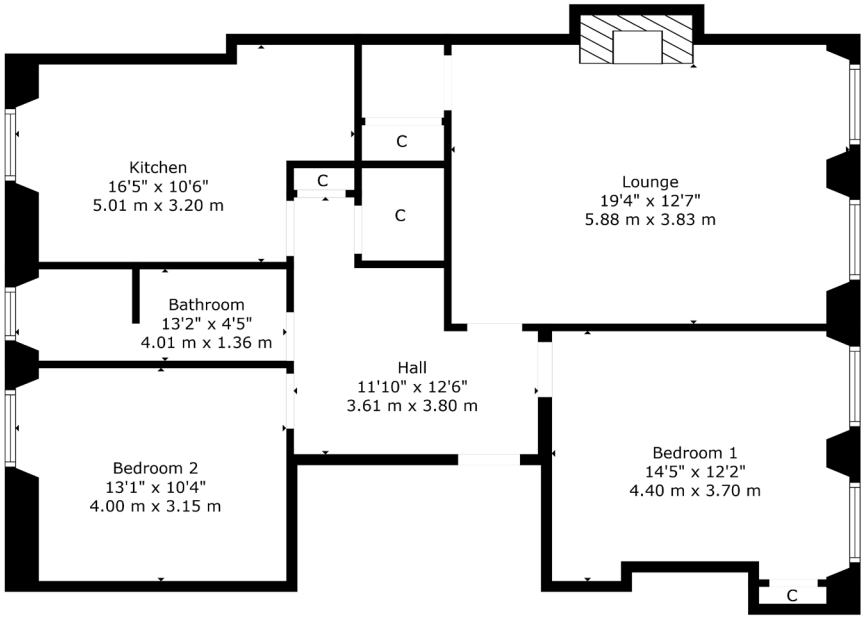
Occupying a bright first floor position within this attractive listed building by Alexander 'Greek' Thomson, an outstanding example of a full two bedroom town flat.

- First floor flat with open views
- 2 double sized bedrooms
- Impressive lounge with fireplace
- Modern kitchen with large island/breakfast bar
- Modern bathroom
- Gas central heating, secure entry system, fresh decor

Amenities

The property is ideally positioned around the corner from local shops, restaurants and delicatessens in the thriving pocket of Nithsdale Road/Kildrostan Street. More extensive amenities are available at the Sainsburys store on Darnley Road, Morrisons store at Crossmyloof, the Marks & Spencer store at Queens Park or the Silverburn shopping centre, a short drive to the West.

Frequent public transport services provide commuter access to the city centre with the local railway station approximately 300 yards walk whilst Shields Road underground station is a short distance away connecting the Southside with Glasgow's subway network.



Sat Nav:
280 Darnley Street, Pollokshields, G41 2JA

SS4980

*All measurements and distances are approximate.
Floorplans are for illustration purposes and may not be to scale.

For the full home report visit
www.corumproperty.co.uk



WE'RE **SOLD** ON
YOUR FUTURE



Corum Shawlands
247 Kilmarnock Road, Shawlands, G41 3JF

Tel: 0141 636 7588

Email: shawlands@corumproperty.co.uk

www.corumproperty.co.uk