



FLAT 2/2, 55 TREFOIL AVENUE

SHAWLANDS

www.corumproperty.co.uk



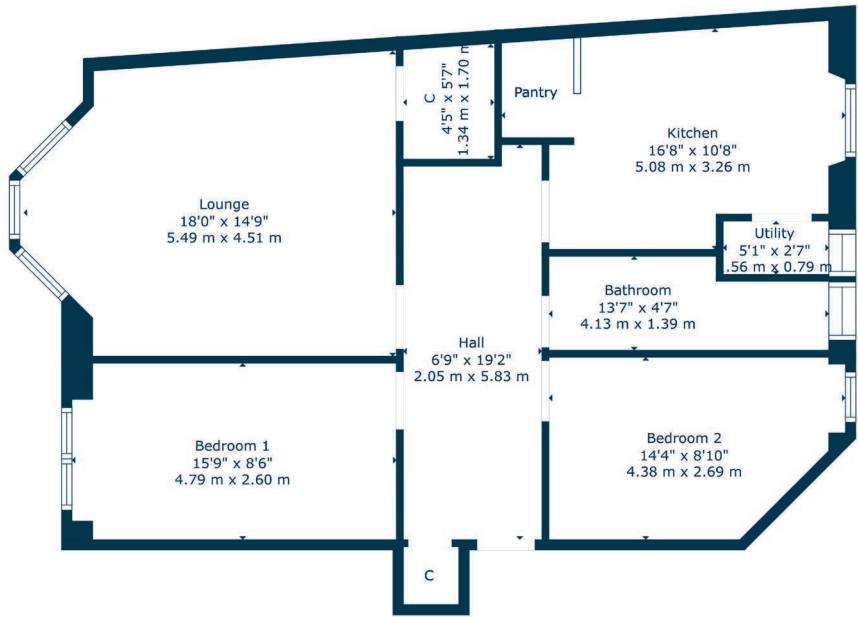
2 | BEDROOMS
1 | BATHROOM
1 | PUBLIC ROOM

This tasteful second floor home is found in a purpose built tenement building on Trefoil avenue, a central Shawlands address. The property has been painstakingly upgraded by our clients and it represents a terrific opportunity to live on the doorstep of all that Shawlands has to offer.

- Stylish flat in centre of Shawlands
- Fitted dining sized kitchen area
- Two generous double bedrooms
- Sleek three piece shower room
- Gas central heating & double glazing
- Superb location, amenities & transport

Amenities

55 Trefoil Avenue is in very close proximity to thriving shops, bars, coffee houses, bakeries and restaurants. Sainsburys, Tesco, Co-op and M&S stores are all within half a mile of the property. Pollok Park and Queen's Park both have excellent recreational space whilst Shawlands Civic Square is also nearby, designed to offer a destination for markets, dance, craft events, speakers and debate.



Sat Nav:
Flat 2/2, 55 Trefoil Avenue, Shawlands, G41 3PB

SS4988

*All measurements and distances are approximate.
Floorplans are for illustration purposes and may not be to scale.

For the full home report visit
www.corumproperty.co.uk



WE'RE **SOLD** ON
YOUR FUTURE



Corum Shawlands
247 Kilmarnock Road, Shawlands, G41 3JF

Tel: 0141 636 7588

Email: shawlands@corumproperty.co.uk

www.corumproperty.co.uk