



**1/1, 24 WESTCLYFFE STREET**  
SHAWLANDS

[www.corumproperty.co.uk](http://www.corumproperty.co.uk)



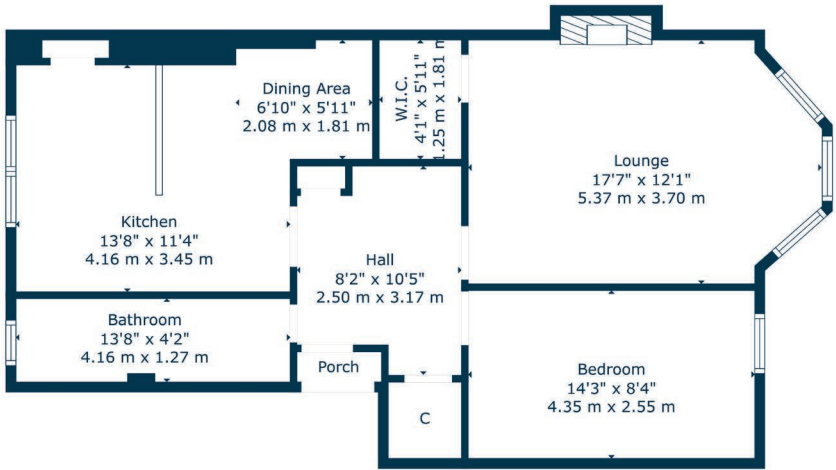
1 | BEDROOM  
1 | BATHROOM  
1 | PUBLIC ROOM

Occupying a pleasant first floor position in Shawlands this charming flat has impressive dimensions and a fitted dining kitchen. The property has been well cared for by our clients and it represents a great opportunity for astute buyers.

- Bright first floor tenement home
- Several amenities in close proximity
- Large bay windowed lounge to front
- Generous double sized bedroom
- Fitted dining kitchen to rear
- Double glazed and gas heating

Amenities

24 Westclyffe Street is in close proximity to thriving shops, bars, coffee houses, bakeries and restaurants. Sainsburys, Tesco, Co-op and M&S stores are all within half a mile of the property. Queen’s Park, Maxwell Park and Pollok Park all offer excellent recreational space whilst Crossmyloof train station is approximately 400 yards from the front door.



Sat Nav:  
1/1, 24 Westclyffe Street, Shawlands, G41 2EE

SS4989

\*All measurements and distances are approximate.  
Floorplans are for illustration purposes and may not be to scale.

For the full home report visit  
[www.corumproperty.co.uk](http://www.corumproperty.co.uk)





WE'RE **SOLD** ON  
YOUR FUTURE



Corum Shawlands  
247 Kilmarnock Road, Shawlands, G41 3JF

**Tel:** 0141 636 7588

**Email:** shawlands@corumproperty.co.uk

[www.corumproperty.co.uk](http://www.corumproperty.co.uk)