



FLAT 1 19 HILLHEAD STREET
HILLHEAD

www.corumproperty.co.uk





3 | BEDROOMS

1 | BATHROOM

1 | PUBLIC ROOM

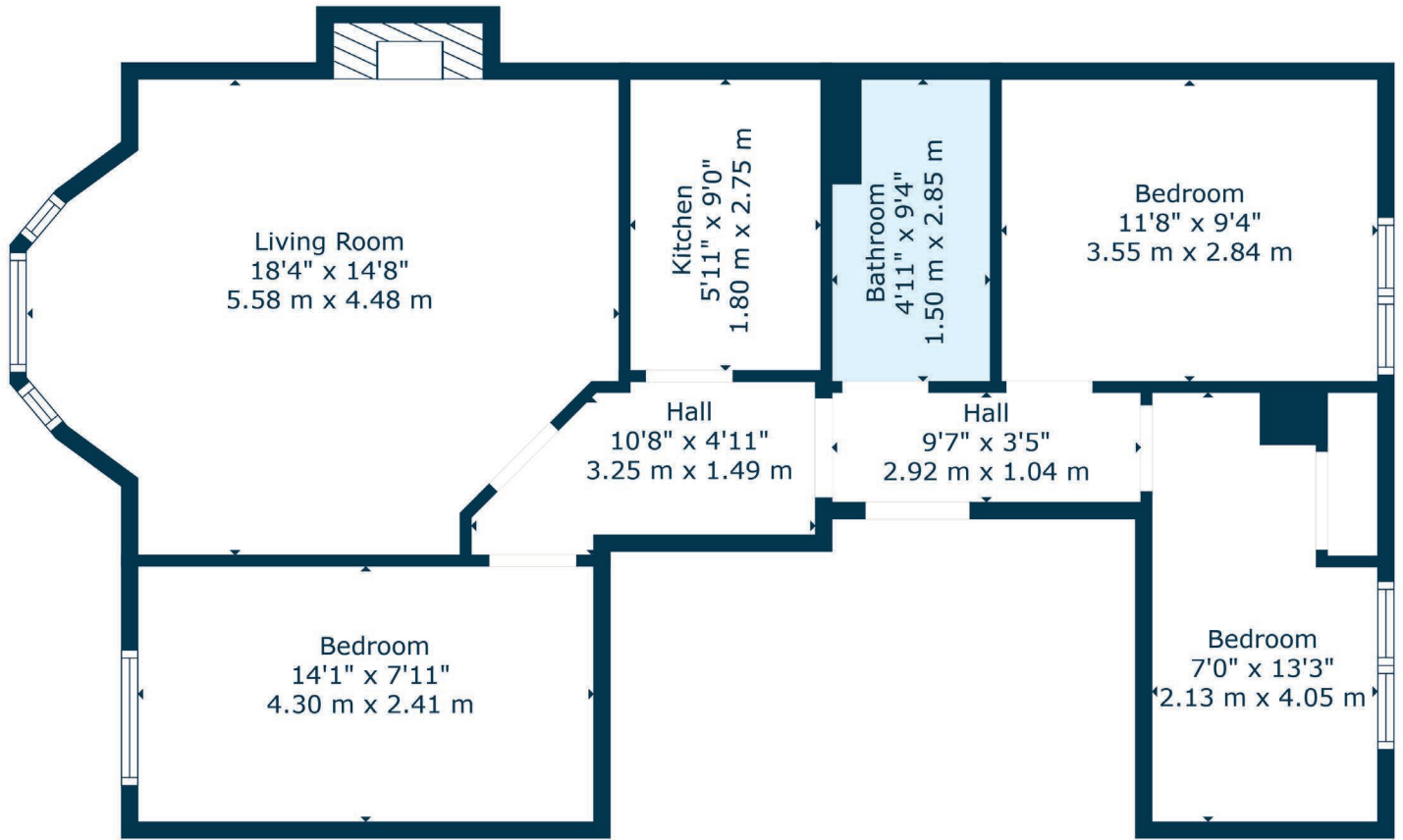
Occupying the entire first floor at 19 Hillhead Street, is this superb three-bedroom flat in a townhouse conversion in the highly sought after Hillhead area, with private parking to the rear and a plethora of period features throughout, including cornicework, feature fireplace and woodwork, whilst accompanied with modernised apartments throughout.

The magnificent building is entered via a secure entry system into a well-maintained residents' reception hall with striking ornate cornicing and original banister leading to the upper levels.

The internal accommodation comprises; a welcoming reception hall with access off to all apartments, spacious bay windowed lounge to the front with feature fireplace and ornate cornice work, and a beautifully upgraded galley style kitchen, boasting a range of base and wall mounted units and integrated appliances. There are three good sized double bedrooms, all offering ample space for free-standing storage, and a modern, well-appointed shower room with three-piece suite completes the internal accommodation on offer.

In addition, the property benefits from gas central heating, newly installed double-glazed sash and case windows throughout, secure entry system, and to the rear of the property there is a communal raised decked area and allocated parking space. On street permit parking is also available via request from Glasgow City Council.





Hillhead is centrally located within the West End, close to Glasgow University. The main street, Byres Road, offers a wide selection of shops, cafés and supermarkets including Tesco Metro, Marks & Spencer and Waitrose. The famous Ashton Lane is situated just off Byres Road offering various bars, restaurants and the Grosvenor Cinema.

The recently refurbished Hillhead Underground on Byres Road provides swift access to Glasgow City Centre and regular bus services operate on Byres Road and Great Western Road. There are also good road links to the motorway network and Glasgow International Airport. Glasgow University is situated on University Avenue and provides world class further education.

The location is extremely popular for students, first time buyers and young professionals.

WE5313 | Sat Nav: Flat 1 19 Hillhead Street, Hillhead, Glasgow, G12 8PX

For the full home report visit www.corumproperty.co.uk

* All measurements and distances are approximate Floorplans are for illustration purposes and may not be to scale.



WE'RE **SOLD** ON
YOUR FUTURE



Corum West End
82 Hyndland Road, Glasgow, G12 9UT

Tel: 0141 357 1888

Email: westendenq@corumproperty.co.uk

www.corumproperty.co.uk