



38 HANNAH WYND

ST QUIVOX, AYR

www.corumproperty.co.uk





5 | BEDROOMS

3 | BATHROOMS

2 | PUBLIC ROOMS

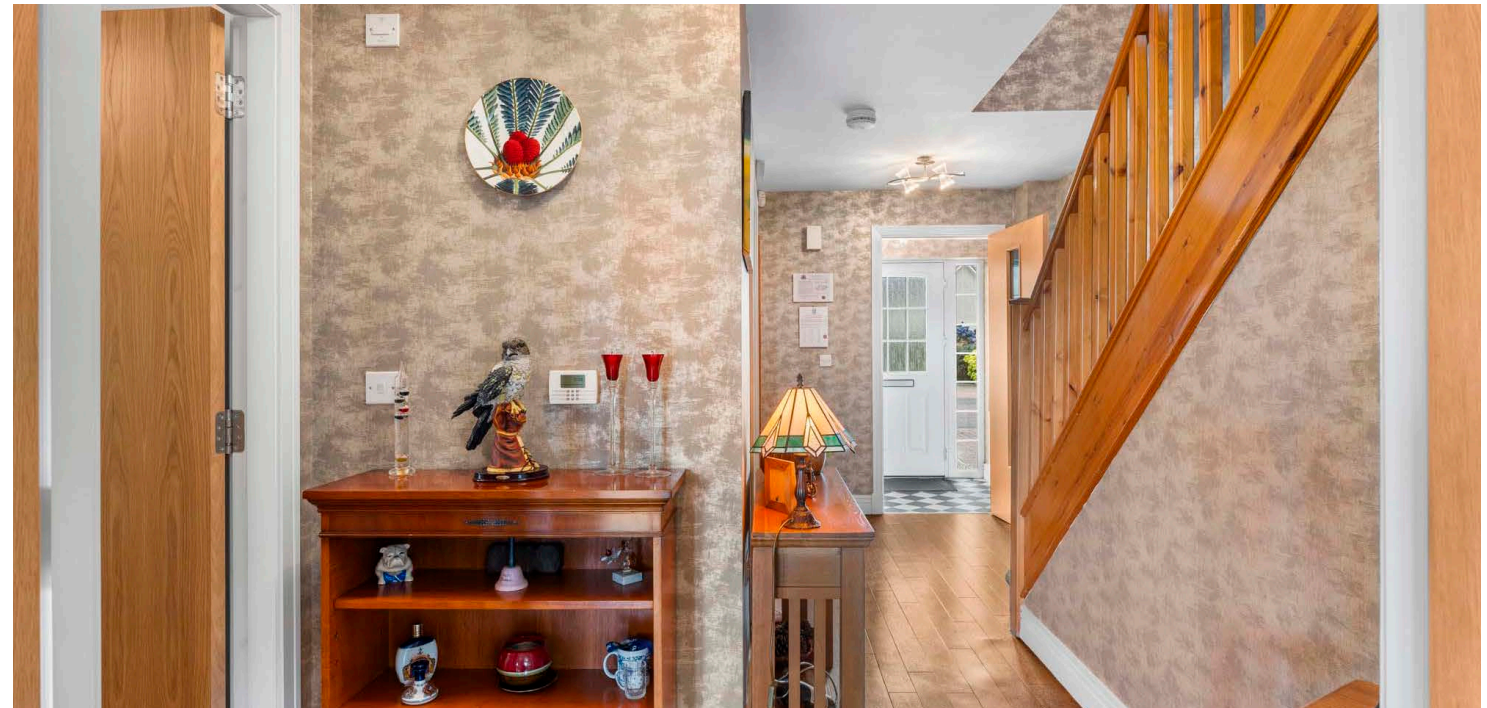
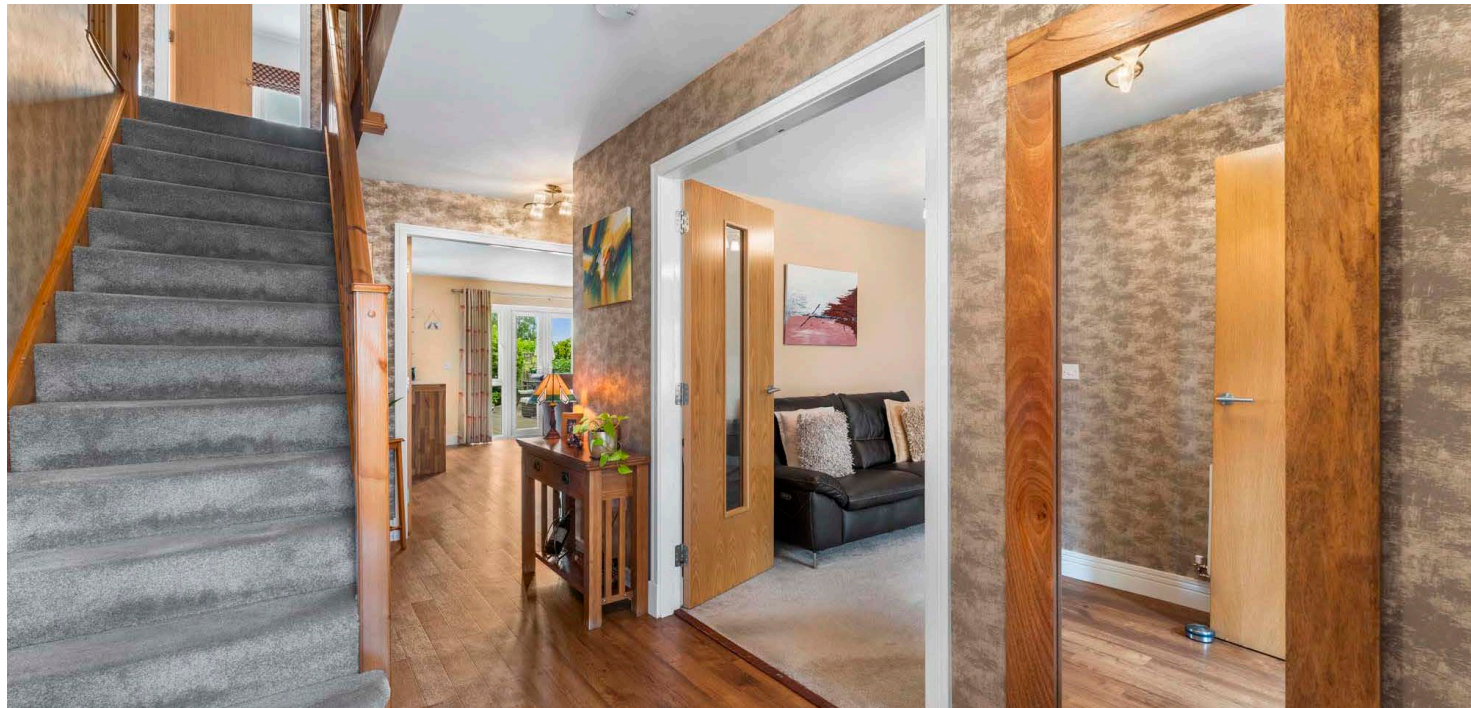
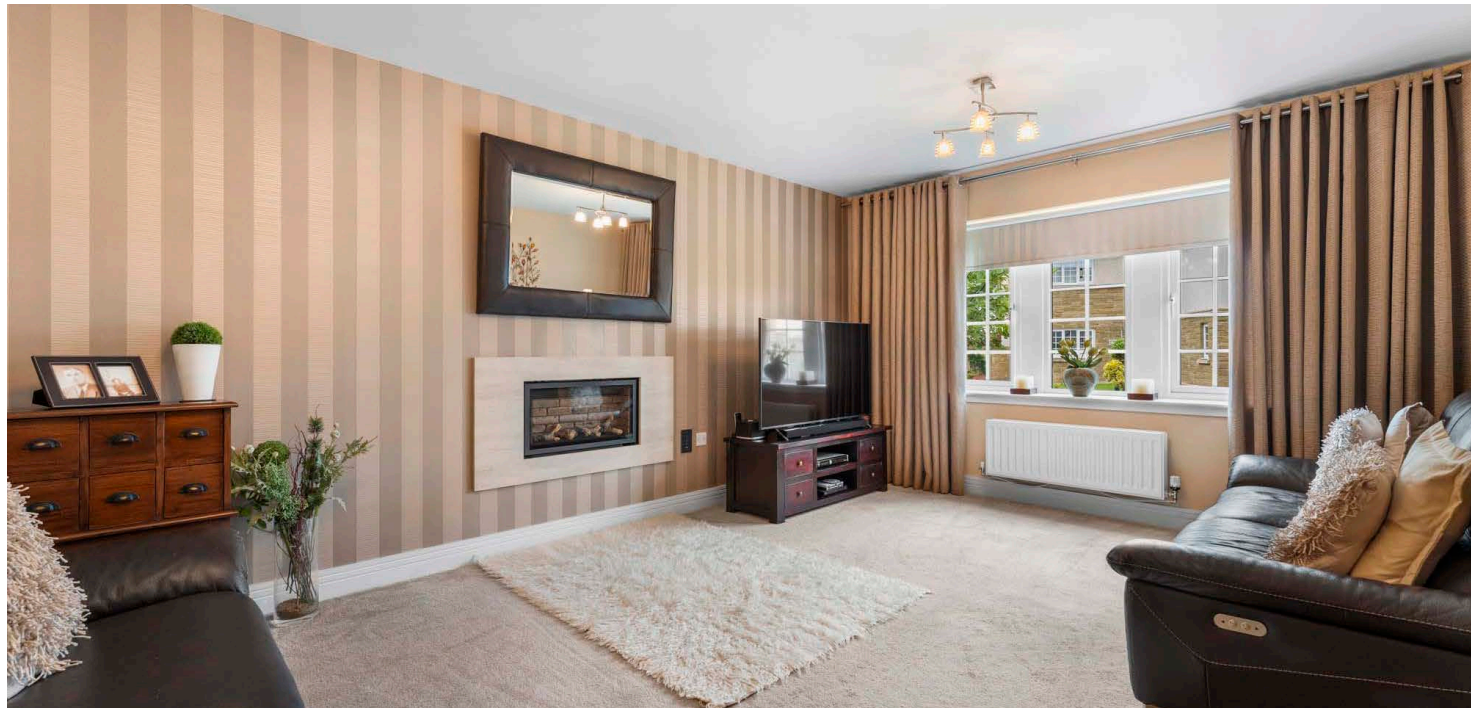
An exceptional Cala Homes executive villa, The Crichton house-type, positioned on one of the finest plots in this sought-after development. With four bedrooms (two en suite), a study/fifth bedroom, generous open-plan living, landscaped sun-filled gardens, and elegant interiors throughout - this is a stylish family home with space to grow.

Situated on one of the premier plots within this prestigious Cala Homes development in St Quivox, 38 Hannah Wynd is a truly outstanding example of The Crichton house type - a beautifully designed executive detached villa offering refined family living with a high-end finish throughout.

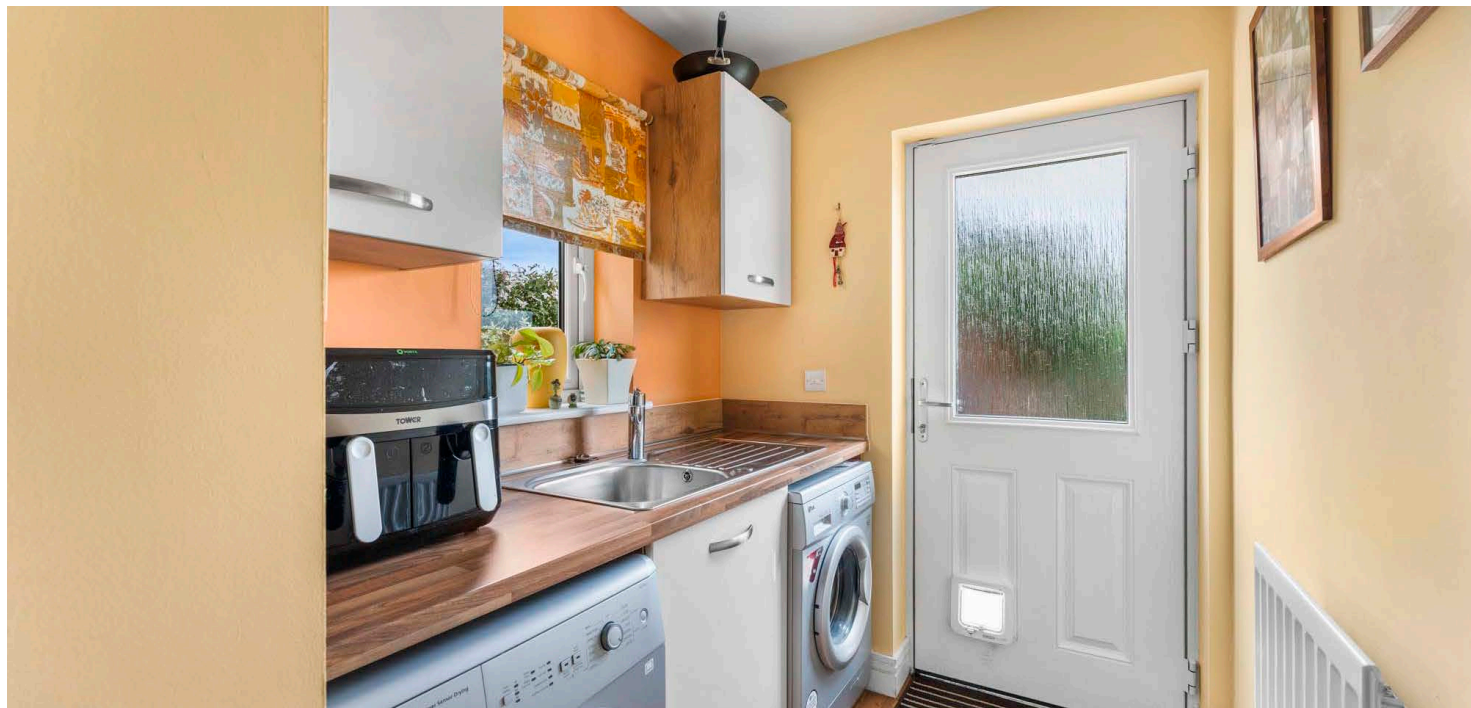
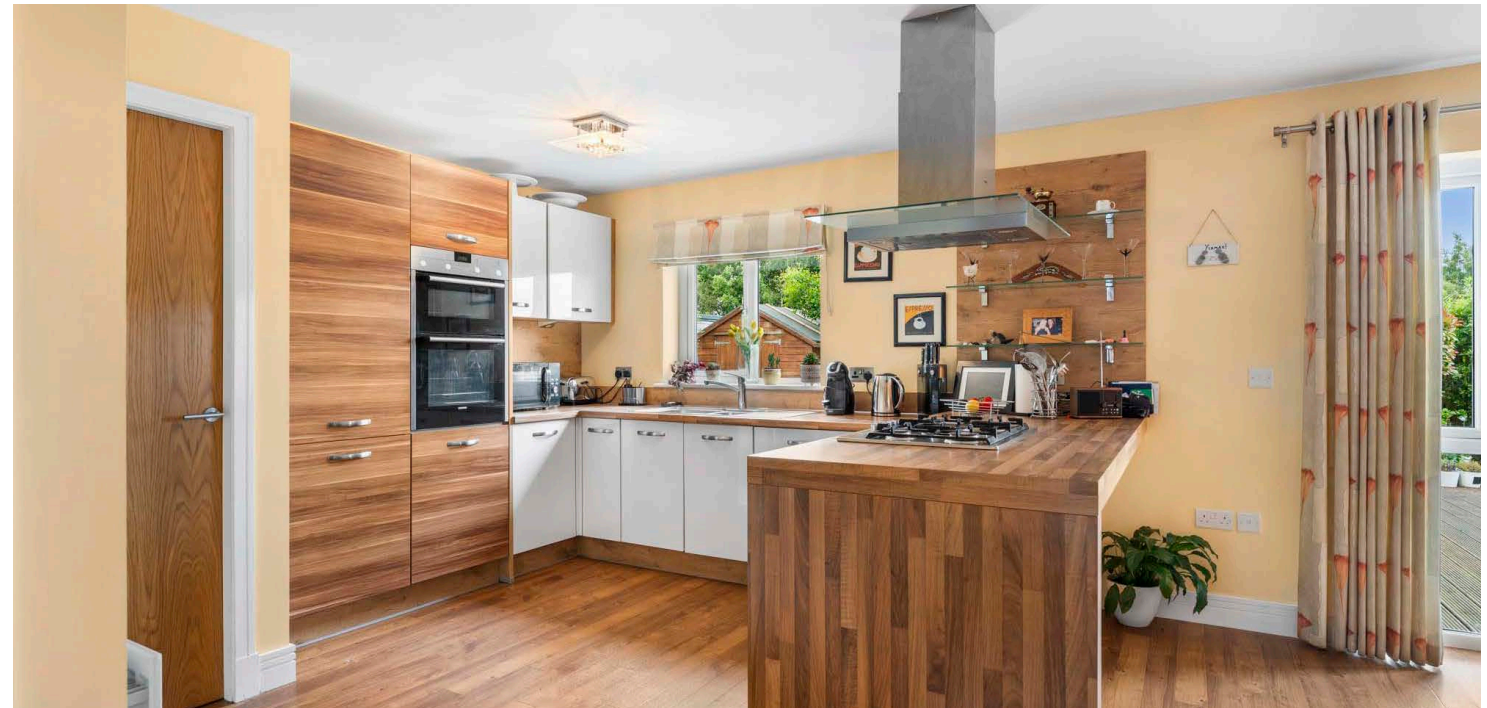
Thoughtfully positioned to enjoy privacy and sunlight, the property has landscaped rear gardens that are not overlooked, creating a peaceful and secluded setting for outdoor relaxation and entertaining. The spacious interior begins with a welcoming entrance vestibule that leads into a generous L-shaped reception hallway with W.C./cloakroom. From here, you'll find a formal lounge for more intimate gatherings, while the heart of the home lies in the expansive open-plan kitchen and family/dining area. This superb space is bathed in natural light and opens via French doors onto the sunny patio and rear garden, with a separate utility room for the practical needs of a busy household. The integral garage completes the ground floor accommodation.

Upstairs, there are four well-proportioned bedrooms - two of which benefit from en-suite shower rooms - along with a luxurious family bathroom and a versatile study/fifth bedroom, ideal for home working or guest accommodation.

This is a home that balances elegance and comfort with contemporary design and family functionality, all set within an exclusive and peaceful location.



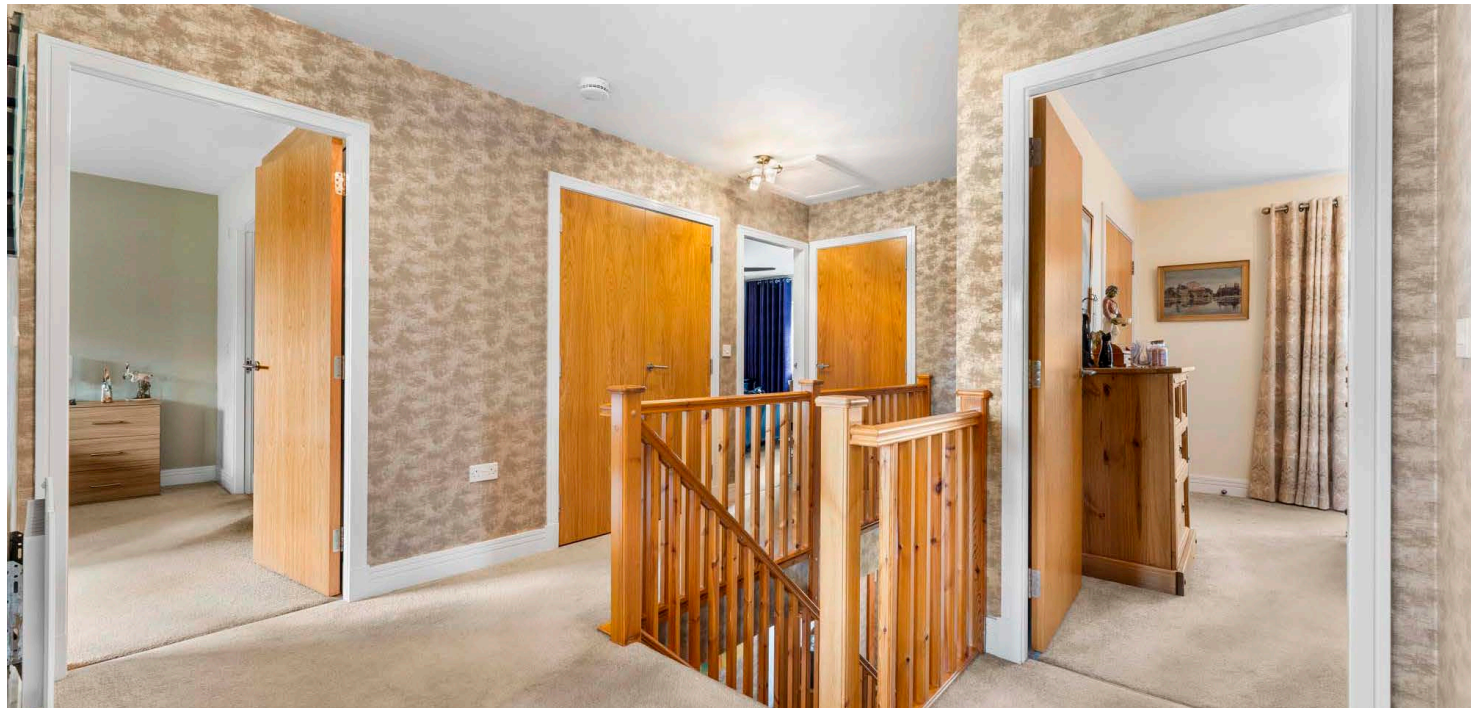


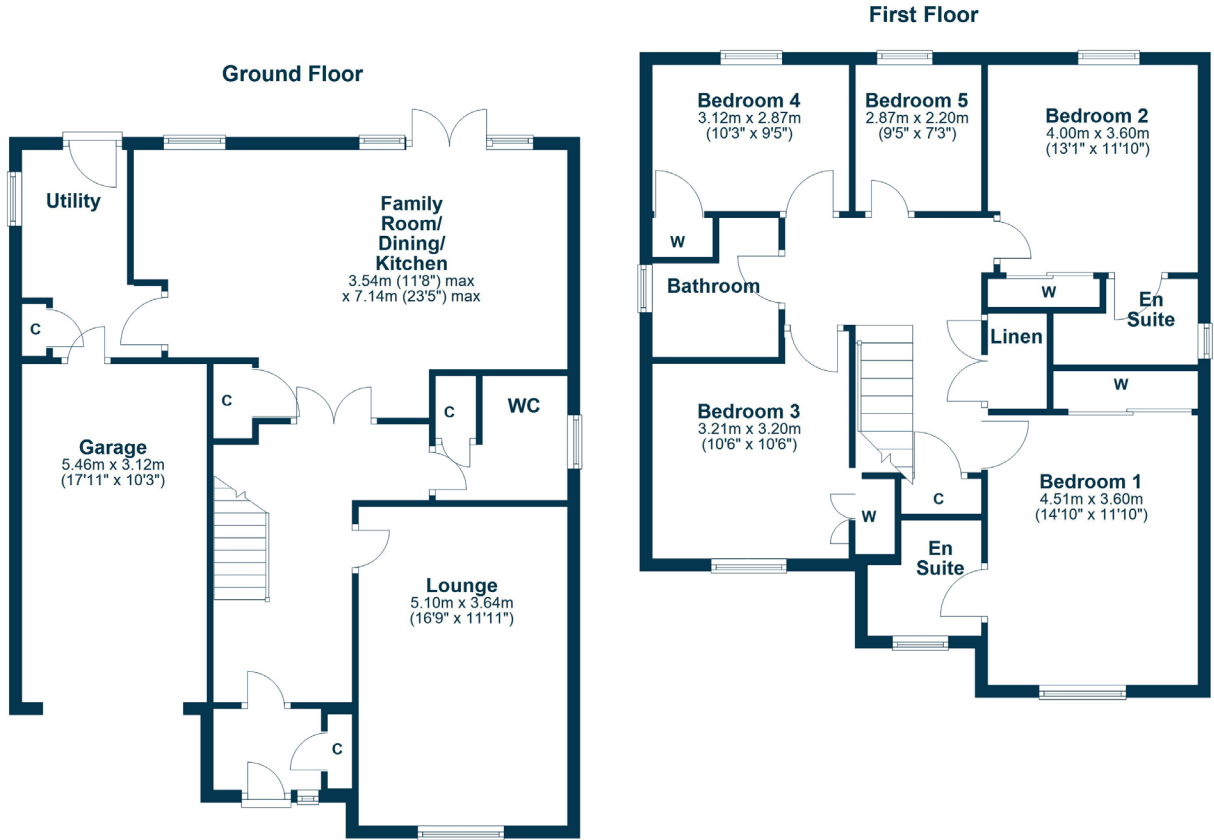
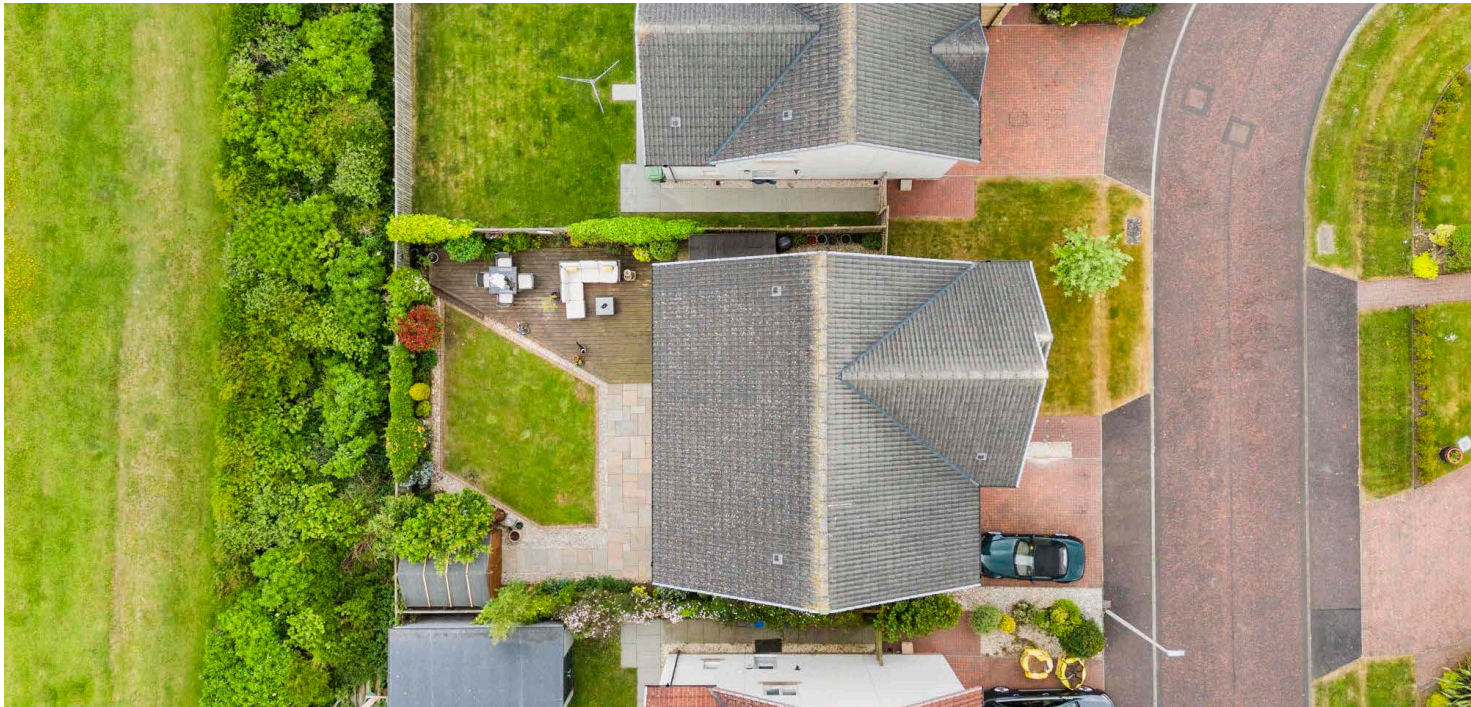












St Quivox is a charming and desirable residential enclave nestled just 10 minutes drive from Ayr's vibrant town centre. Offering a perfect blend of countryside tranquility and modern convenience, the area enjoys easy access to excellent local schools, shops, leisure amenities, and commuter routes.

The Cala Homes development at Hannah Wynd is particularly well-regarded for its executive homes and family-friendly atmosphere, with tree-lined streets, landscaped green spaces, and a strong sense of community. Outdoor enthusiasts will love the nearby walks, golf courses, and coastal pursuits, while Ayr's sandy beaches, cafes, and restaurants are just a short drive away.

For those seeking luxury living with a semi-rural feel, and the convenience of urban amenities close at hand, this location delivers on all fronts.

AY5278 | Sat Nav: 38 Hannah Wynd, St Quivox, Ayr, KA6 5HB

For the full home report visit www.corumproperty.co.uk

* All measurements and distances are approximate Floorplans are for illustration purposes and may not be to scale.



WE'RE **SOLD** ON
YOUR FUTURE



Corum Ayr
10 Beresford Terrace, Ayr, KA7 2EG

Tel: 01292 880 888

Email: ayr@corumproperty.co.uk

www.corumproperty.co.uk