



# 16 SCHOOL HOUSE

QUARRIERS VILLAGE

[www.corumproperty.co.uk](http://www.corumproperty.co.uk)







### 3 | BEDROOMS

### 3 | BATHROOMS

### 2 | PUBLIC ROOMS

**This exceptional 3-bedroom mews house forms part of Quarriers Village's original School House, offering character-filled accommodation that bridges past and present. The perfect home for those who appreciate unique architecture and a tangible connection to history.**

Attached to the historic Old School House, this exceptional three-bedroom mews property offers a rare blend of period charm and contemporary living. Meticulously maintained and brimming with character, this home must be seen in person to fully appreciate its spacious, light-filled interiors and idyllic village setting, complete with a private garage.

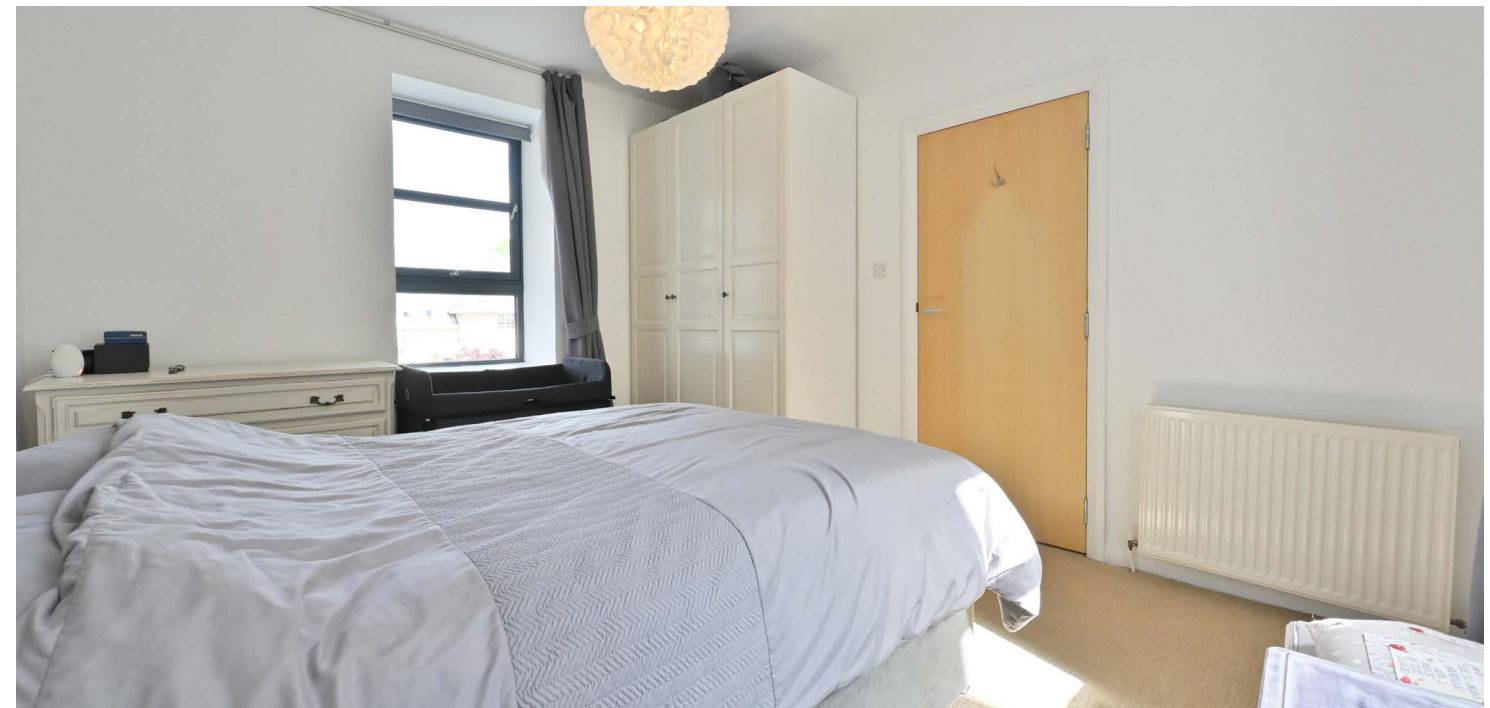
Entry through your private courtyard entrance into a welcoming hallway, complete with handy storage cupboards and access to the lower apartments. A breathtaking living room with soaring 19-foot ceilings, flooded with natural light from its floor-to-ceiling window and enhanced by French doors opening to the courtyard. This elegant space features bespoke shelving.

The open-plan kitchen-diner is equally impressive, offering ample fitted storage, plentiful work surfaces, and integrated appliances (including oven, hob, fridge, freezer, and dishwasher). A versatile third bedroom, ideal as a guest room, study, or snug—boasts a charming picture window framing courtyard views, while a convenient WC completes the ground floor.

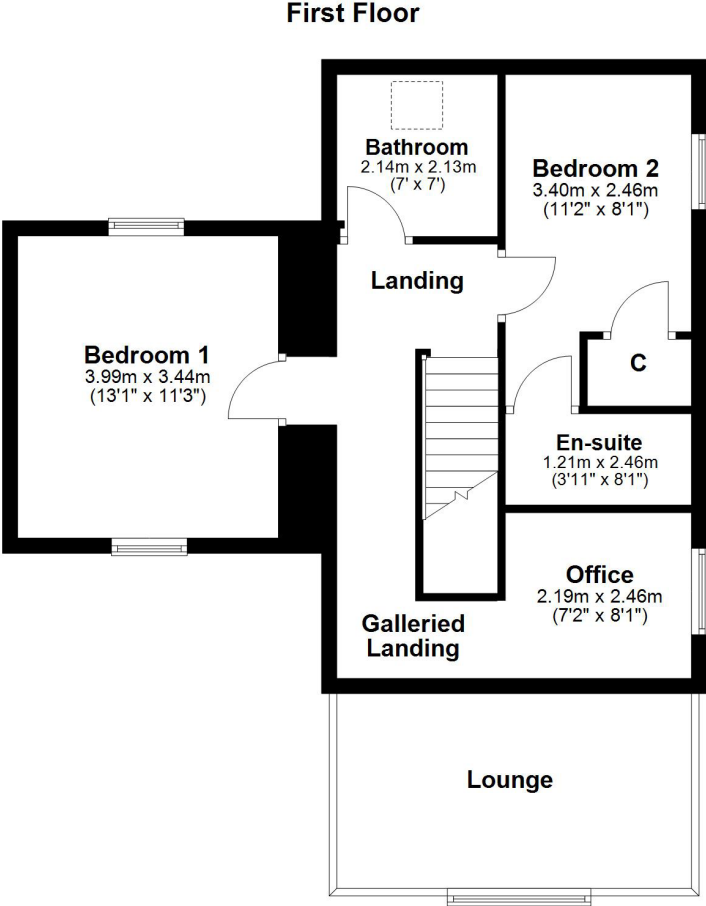
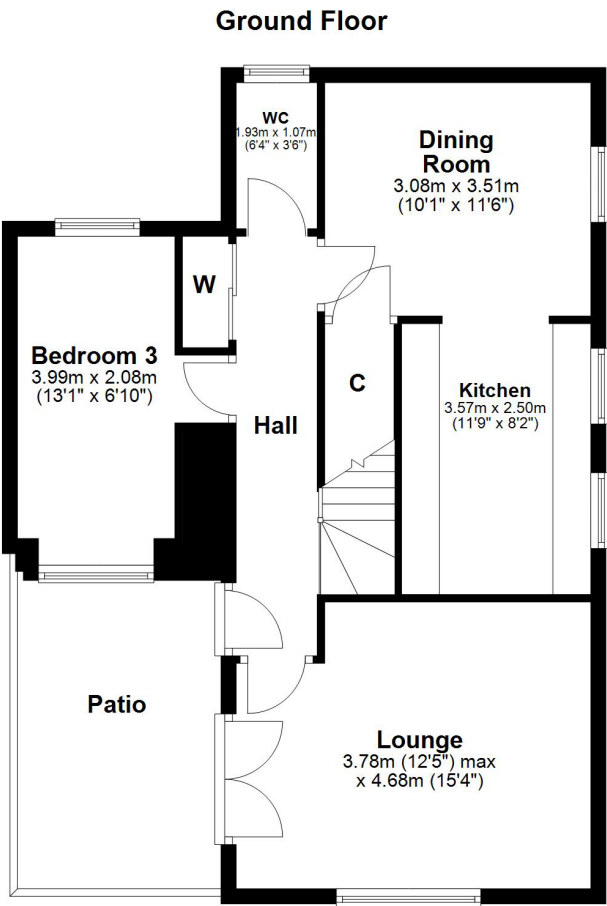
Upstairs, the landing leads to two well-proportioned double bedrooms, including a dual-aspect main bedroom and a second bedroom with fitted wardrobes and an ensuite shower room. A modern family bathroom features a three-piece suite with an over-bath shower. A galleried landing leads to the mezzanine office, a bright and airy workspace overlooking the stunning living area below.

Specification includes gas central heating via a new boiler, double glazing throughout and a private garage, currently used as a home gym.









Nestled between the charming villages of Bridge of Weir and Kilmacolm, Quarriers Village offers a peaceful retreat with a strong sense of community, all while providing excellent access to modern conveniences. This picturesque conservation area boasts scenic walks, historic architecture, and a tranquil atmosphere, yet remains just a short drive from local shops, highly regarded schools, and leisure facilities in nearby towns. Commuters will appreciate the quick links to the A737 bypass and M8 motorway, ensuring straightforward access to Glasgow (under 30 minutes), Glasgow Airport, and beyond. With its blend of rural charm and strategic location, Quarriers Village is ideal for those seeking a serene lifestyle without sacrificing connectivity.

**BW2625** | Sat Nav: 16 School House, Quarriers Village, PA11 3NQ

For the full home report visit [www.corumproperty.co.uk](http://www.corumproperty.co.uk)

\* All measurements and distances are approximate Floorplans are for illustration purposes and may not be to scale.



WE'RE **SOLD** ON  
YOUR FUTURE



Corum Bridge of Weir  
2 Windsor Place, Main Street, Bridge Of Weir, PA11 3AF

T: 01505 691 400

E: [bridgeofweir@corumproperty.co.uk](mailto:bridgeofweir@corumproperty.co.uk)

[www.corumproperty.co.uk](http://www.corumproperty.co.uk)