



24 CROMPTONS GROVE
PAISLEY

www.corumproperty.co.uk





3 | BEDROOMS

1 | BATHROOM

1 | PUBLIC ROOM

Charming three bedroom home in a popular location in the West End of Paisley with modern interior and lovely rear garden.

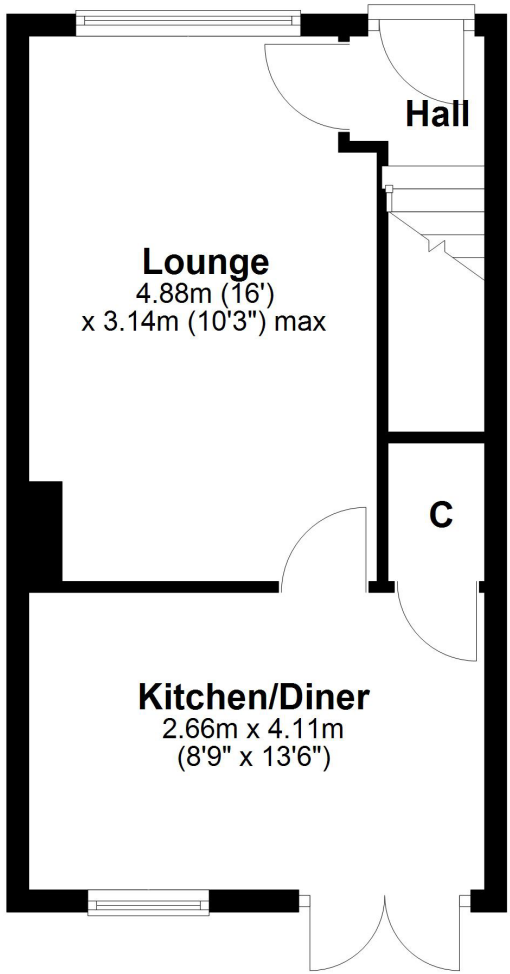
An attractive modern home that is positioned on Crompton's Grove in the west end of Paisley. The property is situated on a terrace overlooking the Old Canal with an allocated parking space to the rear of the house. The enclosed rear garden is landscaped with a split level area of timber decking. The front has a lawn and patio area with an entrance to the pedestrianised area overlooking the Old Canal.

This modern home is presented with neutral, modern décor and the specification includes gas central heating and double glazing. It is an ideal starter home that features modern fitted kitchen furniture and an upgraded bathroom. The accommodation comprises of a reception hallway with stairs leading to the upper floor. There is a well-proportioned lounge with large full height window to the front of the property and a modern fitted kitchen with space for a dining table and french doors to the landscaped rear gardens. On the upper floor of the property there is a central hallway, the main double bedroom with a storage wardrobe and pleasant views to the front. There is a second single bedroom and a third small bedroom which is currently used as a home office. The upgraded bathroom features modern sanitary wear, and the attic provides additional storage.

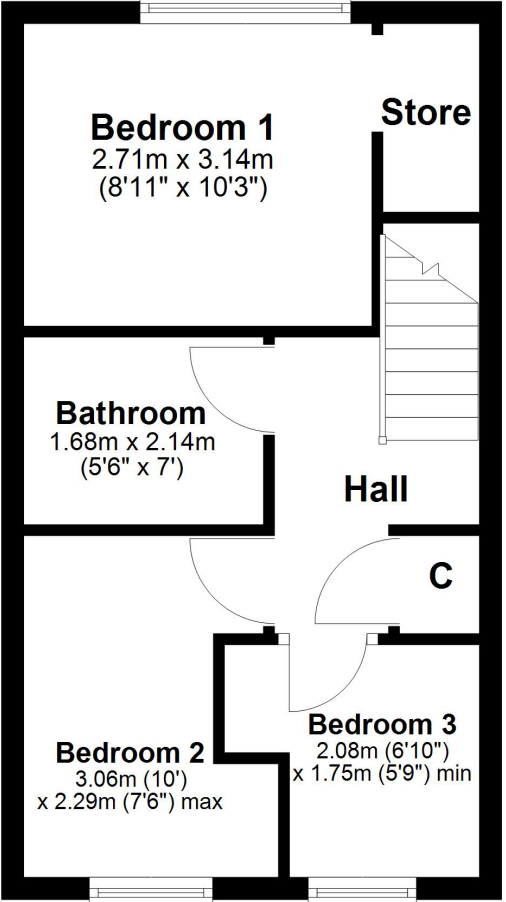




Ground Floor



First Floor



The historic town of Paisley has an excellent range of shopping, sporting facilities, transport links and the impressive Paisley Abbey. Regular mainline railway services to Glasgow City centre and the Clyde coast. Connections to Glasgow International Airport and the M8 motorway. Paisley is home to the University of The West of Scotland and has established schooling in the local area. Gleniffer Braes has a variety of walks, Paisley Golf Club, and stunning views toward the Campsie Hills.

BW2634 | Sat Nav: 24 Cromptons Grove, Paisley, PA1 2NF

For the full home report visit www.corumproperty.co.uk

* All measurements and distances are approximate Floorplans are for illustration purposes and may not be to scale.



WE'RE **SOLD** ON
YOUR FUTURE



Corum Bridge of Weir
2 Windsor Place, Main Street, Bridge Of Weir, PA11 3AF

T: 01505 691 400

E: bridgeofweir@corumproperty.co.uk

www.corumproperty.co.uk