



FLAT 0/1, 12 PROSPECTHILL GROVE

GLASGOW

www.corumproperty.co.uk



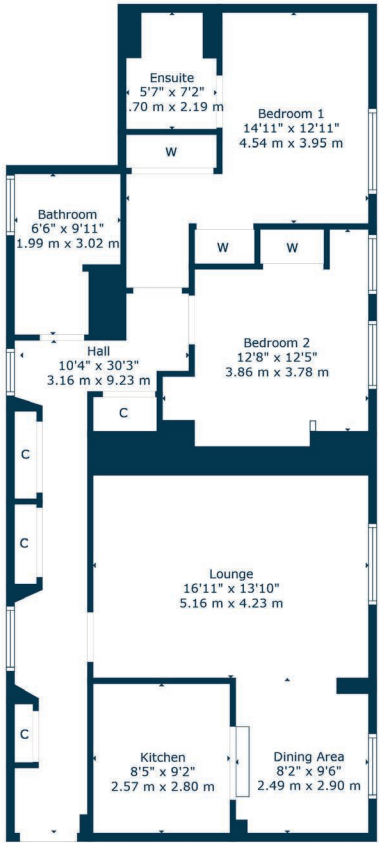
2 | BEDROOMS
2 | BATHROOMS
1 | PUBLIC ROOM

Occupying a particularly accessible ground floor position in an admired building, this unique flat has terrific dimensions and an abundance of fitted storage. Available for a speedy entry date, the property has several sought after traits and is nearby many celebrated Southside haunts.

- Level ground floor flat in admired building
- Open plan lounge, dining, kitchen area
- Two double bedrooms one with en-suite
- Exceptional storage provision throughout
- One designated off street parking space
- Several amenities in close proximity

Amenities

12 Prospecthill Grove is within half a mile of numerous independent coffee houses, restaurants, bars and shops. Recreational pursuits are available nearby at Queens Park where nature walks, playparks, tennis courts and the regenerated bandstand are all located. Mount Florida train station is approximately 400 yards away providing several services an hour into Glasgow central station.



Sat Nav:
Flat 0/1, 12 Prospecthill Grove, Glasgow, G42 9LD

SS5050

*All measurements and distances are approximate.
Floorplans are for illustration purposes and may not be to scale.

For the full home report visit
www.corumproperty.co.uk



WE'RE **SOLD** ON
YOUR FUTURE



Corum Shawlands
247 Kilmarnock Road, Shawlands, G41 3JF

Tel: 0141 636 7588

Email: shawlands@corumproperty.co.uk

www.corumproperty.co.uk