



23 NORTHWOOD WYND

GLASGOW

www.corumproperty.co.uk



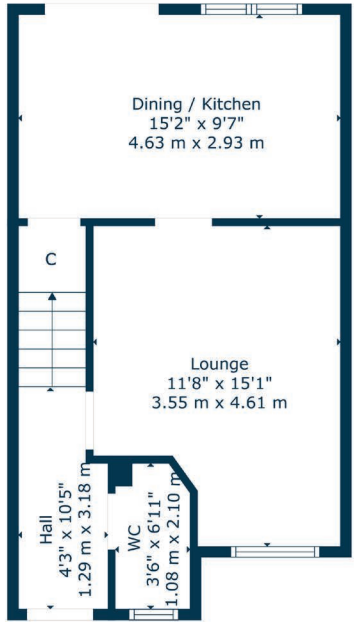
3 | BEDROOMS
3 | BATHROOM
1 | PUBLIC ROOM

Positioned in level garden grounds, this tremendous home is presented to market in turnkey condition. The property was built by Persimmon Homes and benefits from the remaining term of their NHBC warranty.

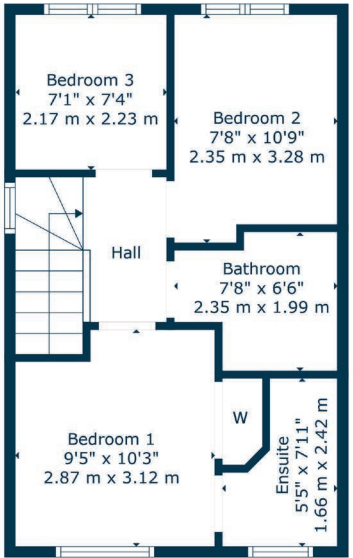
- Modern end terrace by Persimmon
- Three versatile bedrooms in total
- Integrated dining sized kitchen
- Enclosed garden accessed from kitchen
- Bathroom, en-suite and separate wc
- Designated parking space to rear

Amenities

23 Northwood Wynd is well positioned near junction 2 of the M77 motorway allowing swift access to the West coast or into Glasgow city centre and the M8 motorway/Glasgow Airport. Silverburn shopping centre is a short distance away delivering numerous retailers, restaurants, a petrol station and a 24 hour Tesco supermarket. Glasgow's celebrated Pollok Park is less than one mile from the front door whilst Kennishead or Pollokshaws West train stations offer commuter access into Glasgow central station.



Ground Floor



1st Floor

Sat Nav:
23 Northwood Wynd, Glasgow, G43 1DL

SS5061

*All measurements and distances are approximate.
Floorplans are for illustration purposes and may not be to scale.

For the full home report visit
www.corumproperty.co.uk



WE'RE **SOLD** ON
YOUR FUTURE



Corum Shawlands
247 Kilmarnock Road, Shawlands, G41 3JF

Tel: 0141 636 7588

Email: shawlands@corumproperty.co.uk

www.corumproperty.co.uk