



16 AILSA VIEW GARDENS

DOONFOOT

www.corumproperty.co.uk





4 | BEDROOMS

2 | BATHROOMS

2 | PUBLIC ROOMS

A beautifully presented executive villa with four bedrooms, stylish interiors and stunning south-west facing landscaped gardens. On one of the best plots in this sought-after, family friendly, cul-de-sac - with a gorgeous open-plan kitchen and dining space, elegant lounge, and a luxurious master suite - this is a family home designed for modern living and effortless style.

16 Ailsa View Gardens is a standout executive home with serious style, set on one of the most coveted plots in this exclusive Doonfoot address. Perfectly positioned for privacy, light and tranquillity, this exceptional detached villa offers sleek modern interiors with practical family living, all wrapped in beautiful, south-west facing, landscaped gardens that bask in the afternoon sun. This is a family home that delivers elegance, ease and exceptional living space in one of Doonfoot's most desirable settings.

From the moment you step into the welcoming hallway, there's a sense of space, sophistication and warmth; where quality timber flooring sets a warm and elegant tone, continuing seamlessly through to the lounge and expansive open-plan dining area. The formal lounge, with its statement fireplace, is the perfect setting for relaxed evenings and entertaining. The heart of the home is the spectacular open-plan kitchen and dining area – flooded with natural light and finished to a high contemporary standard. French doors extend the living space out to the garden's generous patio and lawn, making indoor-outdoor living seamless. A separate utility room keeps day-to-day life running smoothly, and the integral garage adds extra versatility, offering plenty of storage. Completing the ground floor is a W.C and handy downstairs' storage cupboard.

Upstairs, four generous bedrooms, including a luxurious master suite complete with a sleek, upgraded en-suite shower room. The family bathroom, also upgraded, serves the remaining bedrooms in style and comes with a three-piece suite, shower over bath, sink with vanity unit. With elegant interiors, premium finishes and a garden made for entertaining, this is a home that delivers on every level - all set in a peaceful, family-friendly cul-de-sac that's moments from the coast and local amenities. A rare opportunity to secure a truly turn-key property in one of Doonfoot's most desirable locations.

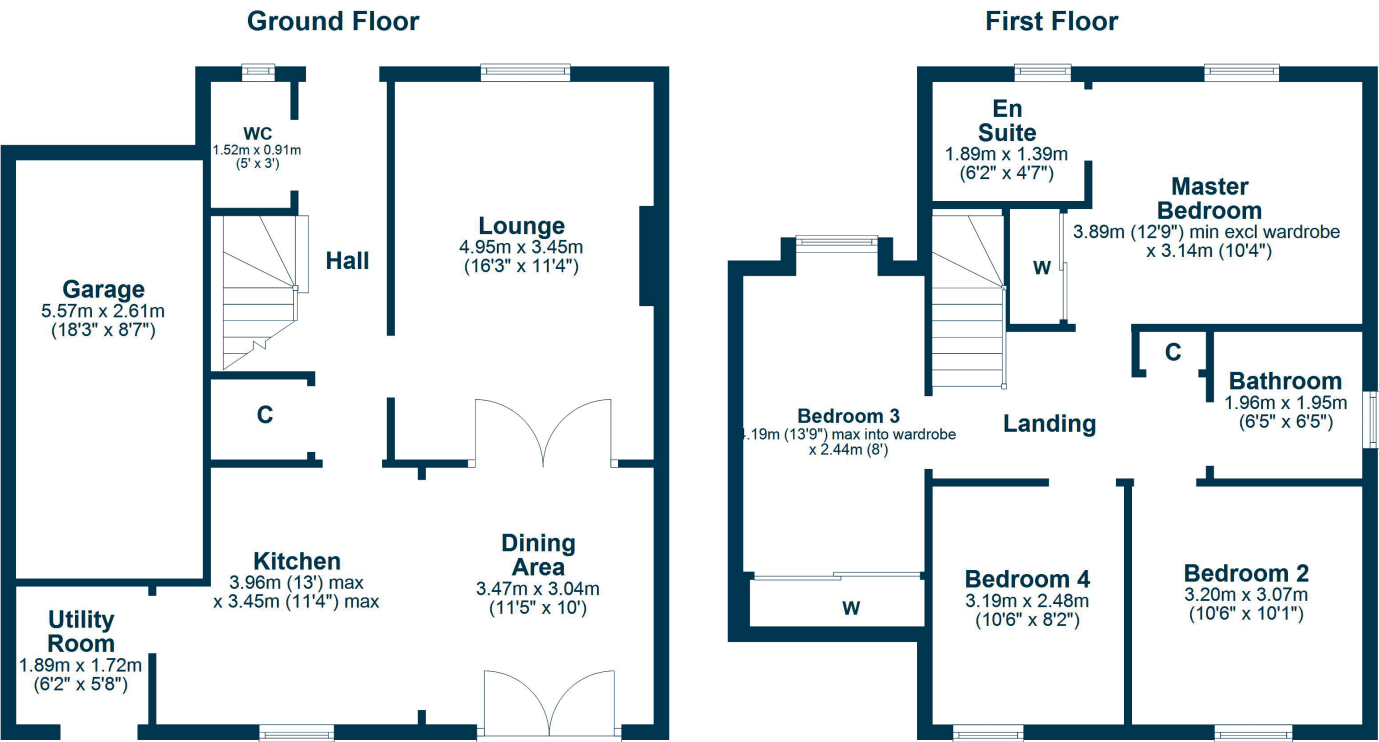












Ailsa View Gardens forms part of a modern and stylish development by award-winning builder MacTaggart & Mickel, perfectly positioned in the ever-popular coastal suburb of Doonfoot. Just a short walk or drive from the beautiful seafront and the highly regarded Doonfoot Primary School, the location offers a fantastic balance of relaxed coastal living and everyday convenience.

Residents enjoy a range of local amenities nearby, including a Co-op supermarket cafes, shops, and scenic walking routes, while Ayr town centre, only three miles away, provides a wider variety of supermarkets, high street retailers, restaurants, and leisure facilities. For those commuting further afield, excellent road links and regular rail services make travel to Glasgow and surrounding areas both quick and convenient.

AY5294 | Sat Nav: 16 Ailsa View gardens, Doonfoot, KA7 4JG

For the full home report visit www.corumproperty.co.uk

* All measurements and distances are approximate Floorplans are for illustration purposes and may not be to scale.



WE'RE **SOLD** ON
YOUR FUTURE



Corum Ayr
10 Beresford Terrace, Ayr, KA7 2EG

Tel: 01292 880 888

Email: ayr@corumproperty.co.uk

www.corumproperty.co.uk