



33 NORTHFIELD AVENUE

AYR

www.corumproperty.co.uk





3 | BEDROOMS

1 | BATHROOM

2 | PUBLIC ROOMS

Step inside the Tardis. This deceptively spacious three double bedroom mid-terrace home at 33 Northfield Avenue offers extended living with serious style. Featuring a generous lounge with feature fireplace, a sleek open-plan dining kitchen, a separate utility, a modern bath & shower room, W.C, private parking, and a garage.

33 Northfield Avenue is a superbly extended mid-terrace family home in Ayr that delivers far more than first meets the eye. Behind its modest exterior lies a truly spacious, thoughtfully upgraded home with three generous double bedrooms, stylish interiors, and excellent outdoor space. A welcoming entrance vestibule opens to a bright reception hallway with a convenient ground floor W.C. The formal lounge is an impressive size, complete with a striking focal-point fireplace. The heart of the home is the contemporary open-plan dining kitchen, designed with both function and flair in mind – perfect for family meals or entertaining friends. A separate utility room adds practicality without compromising on space.

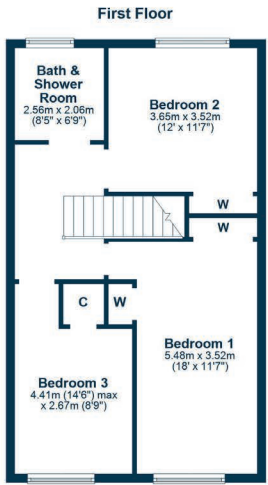
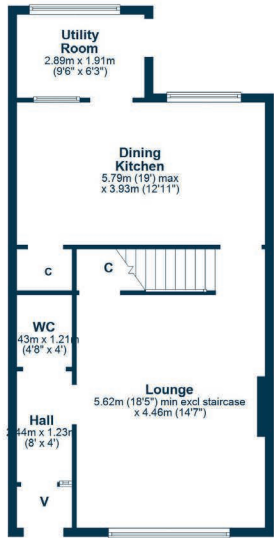
Upstairs, the generous layout continues with three double bedrooms and a luxurious four-piece bathroom, complete with walk-in shower and separate bath. This home has plenty of built-in storage space on both levels, as well as attic space. Outside, the rear garden has been landscaped for low maintenance and includes a large patio area ideal for relaxing or dining outdoors. The property also benefits from off-street parking, a garage, and an attached potting shed – perfect for keen gardeners or extra storage.

Stylish, spacious and superbly located, this is a must-see home for growing families or discerning buyers looking for more.









33 Northfield Avenue offers easy access to a wide range of local amenities, transport links and leisure facilities. Nearby supermarkets include Sainsbury's, Aldi, Tesco, Morrisons and Asda – all within a 5–10 minute drive. Ayr Central Shopping Centre offers a mix of high street retailers and cafés, while Heathfield Retail Park is close by with stores such as M&S Food, Currys, The Range and Home Bargains.

The property is well-served by public transport, with Newton-on-Ayr Station less than a mile away and Ayr Station just over a mile. Both offer regular rail services to Glasgow Central, typically taking under an hour. By car, the A77/M77 is easily accessible, offering a direct route north to Glasgow and south to Stranraer.

Glasgow Prestwick Airport is just 3.5 miles from the property, offering both domestic and international flights and making this location particularly appealing for frequent flyers.

Golf enthusiasts are spoiled for choice, with world-class courses including Belleisle, Seafield, Dalmling and Prestwick Golf Club all within close proximity. Ayr's beachfront and esplanade are ideal for scenic walks and outdoor family time.

Bannatyne Health Club & Spa is less than 10 minutes away, offering a full gym, pool, spa and fitness classes.

The area is served by a range of primary and secondary schools, with local nurseries and childcare facilities also close by.

Whether you're commuting, staying active, or enjoying local shops and green spaces, 33 Northfield Avenue is perfectly positioned to make the most of life in both Ayr and Prestwick.

AY5300 | Sat Nav: 33 Northfield Avenue, Ayr, KA8 9AL

For the full home report visit www.corumproperty.co.uk

* All measurements and distances are approximate Floorplans are for illustration purposes and may not be to scale.



WE'RE **SOLD** ON
YOUR FUTURE



Corum Ayr
10 Beresford Terrace, Ayr, KA7 2EG

Tel: 01292 880 888

Email: ayr@corumproperty.co.uk

www.corumproperty.co.uk