



FLAT 26 RIVERSIDE COURT

LINNPARK AVENUE, NETHERLEE

www.corumproperty.co.uk



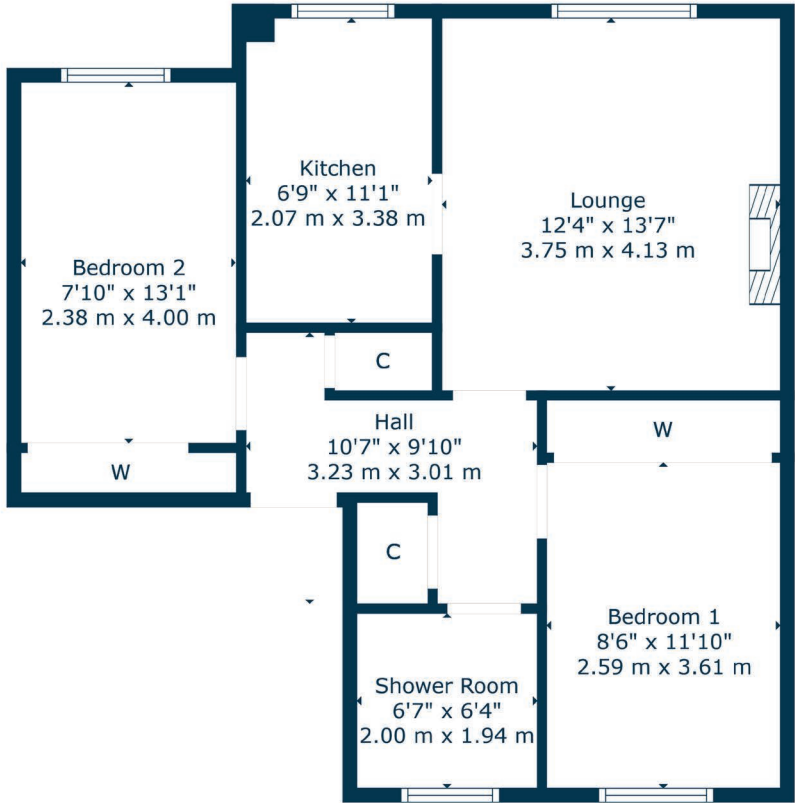
2 | BEDROOMS
1 | BATHROOM
1 | PUBLIC ROOM

A peaceful yet highly convenient ground floor retirement flat.

- Ground floor retirement apartment
- Two double bedrooms
- On-site part-time warden
- Residents’ lounge
- Mature communal gardens.
- Centrally situated with excellent transport links and amenities close by.

Amenities

Netherlee is one of East Renfrewshire’s most sought after residential suburbs and is a haven for young growing families enjoying access to some of the best schooling within the West of Scotland. There is a full range of independent retailers including cafes and restaurants, and the district provides swift access via both road and rail to the city centre and beyond. There is a variety of places of worship found within the surrounding area and an array of sports and leisure activities including local parks, health clubs, gyms and golf courses close to hand in addition to equestrian pursuits.



Sat Nav:
Flat 26 Riverside Court, Linnpark Avenue, Netherlee ,G44 3PH
CC0890

*All measurements and distances are approximate.
Floorplans are for illustration purposes and may not be to scale.

For the full home report visit
www.corumproperty.co.uk



WE'RE **SOLD** ON
YOUR FUTURE



Corum Clarkston & Netherlee
5 Helena Place, Clarkston, G76 7RB

Tel: 0141 648 6000

Email: clarkston@corumproperty.co.uk

www.corumproperty.co.uk