



67 TRENCH DRIVE

GLASGOW

www.corumproperty.co.uk



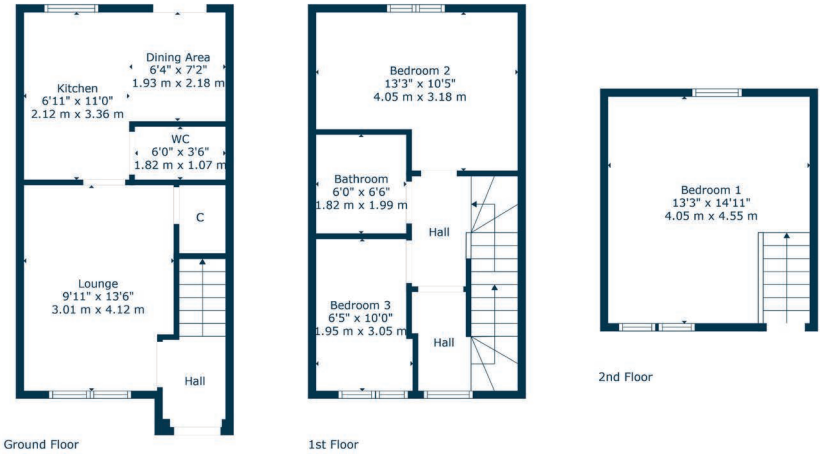
3 | BEDROOMS
1 | BATHROOM
1 | PUBLIC ROOM

A modern end terraced villa set within landscaped garden grounds.

- Great family home.
- Popular development.
- Stylish presentation.
- Great principal bedroom.
- Landscaped rear gardens.
- Private parking space.

Amenities

Darnley is south of Glasgow with excellent local motorway links (M77/ M8) providing swift access to the city centre and Ayrshire, great public transport links of bus and rail close by with Priesthill & Darnely and Nitshill being the nearest stations. The property is situated a short distance from Sainsbury's supermarket and a variety of other shopping and food outlets and there are good local facilities in Thornliebank within half a mile in addition to Silverburn shopping mall just over a mile away. There is of a myriad sports and recreational facilities a short distance away, and the area is well served with excellent local primary and secondary education facilities.



Sat Nav:
67 Trench Drive, Glasgow, G53 7QX

NM4596

*All measurements and distances are approximate.
Floorplans are for illustration purposes and may not be to scale.

For the full home report visit
www.corumproperty.co.uk



WE'RE **SOLD** ON
YOUR FUTURE



Corum Newton Mearns
134 Ayr Road, Newton Mearns, G77 6EG

Tel: 0141 639 5888

Email: n.mearns@corumproperty.co.uk

www.corumproperty.co.uk