



64 ORCHARD DRIVE

GIFFNOCK

www.corumproperty.co.uk





3 | BEDROOMS

1 | BATHROOM

2 | PUBLIC ROOMS

Creatively extended semi detached house within a fantastic central location near Giffnock village.

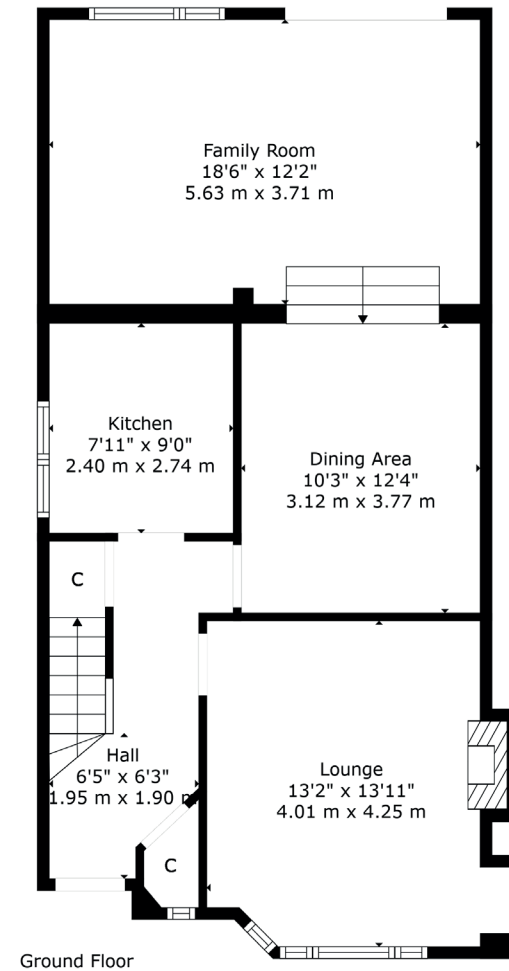
This traditional semi detached villa has been extended and reconfigured to provide a great flowing family home. Fantastic private and mature garden grounds which enjoy a highly popular and sought after location, the subjects are conveniently located for a full range of local amenities, facilities, and of course local excellent local schooling.

The well proportioned accommodation in brief extends to entrance hallway, lounge to front, kitchen, dining room open to rear family room with garden access. The upper level offers bright spacious landing area giving access to the generous principal bedroom, two further bedrooms and bathroom. Specification includes a system of gas central heating and double glazing.

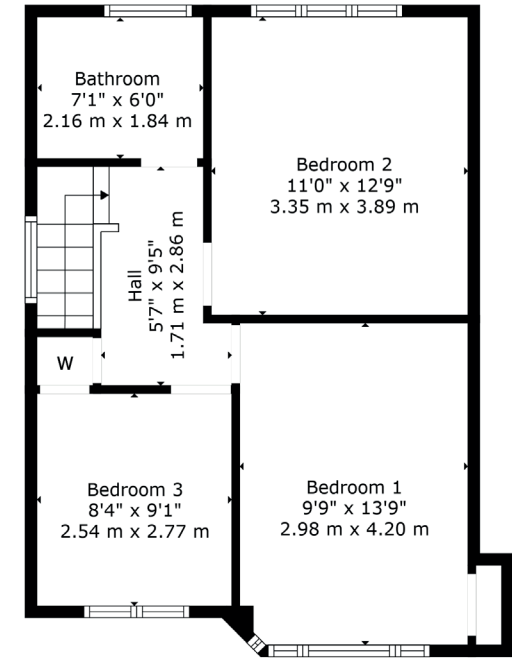
Externally the subjects are set within private mature garden grounds which are fully enclosed. The driveway to the front and side provides ample vehicular parking.

The floor plan shall provide you with a detailed layout of this fantastic family home, however, we recommend viewing to appreciate the size and convenient location on offer.





Ground Floor



1st Floor

Giffnock continues to be one of the most desirable residential suburbs on Glasgow's south side. A haven for young growing families, the district is synonymous with some of the best schooling in the West of Scotland. Moreover, there are excellent transport links via bus and train close at hand, in addition to local motorway links (M77/M8) providing swift access to the city centre and Ayrshire. There are two train stations within close proximity, Giffnock and Thornliebank. There are numerous independent shops, restaurants and delicatessens only a short walk away. An abundance of sports and leisure facilities are available within East Renfrewshire including David Lloyd Sports Club, Nuffield Health Gym, Whitecraigs Golf Club, Giffnock and Whitecraigs Tennis Clubs and Rouken Glen Park.

NM4615 | Sat Nav: 64 Orchard Drive, Giffnock, G46 7AJ

For the full home report visit www.corumproperty.co.uk

* All measurements and distances are approximate Floorplans are for illustration purposes and may not be to scale.



WE'RE **SOLD** ON
YOUR FUTURE



Corum Newton Mearns
134 Ayr Road, Newton Mearns, G77 6EG

Tel: 0141 639 5888

Email: n.mearns@corumproperty.co.uk

www.corumproperty.co.uk