



34 THORNCLIFFE GARDENS

STRATHBUNGO

www.corumproperty.co.uk



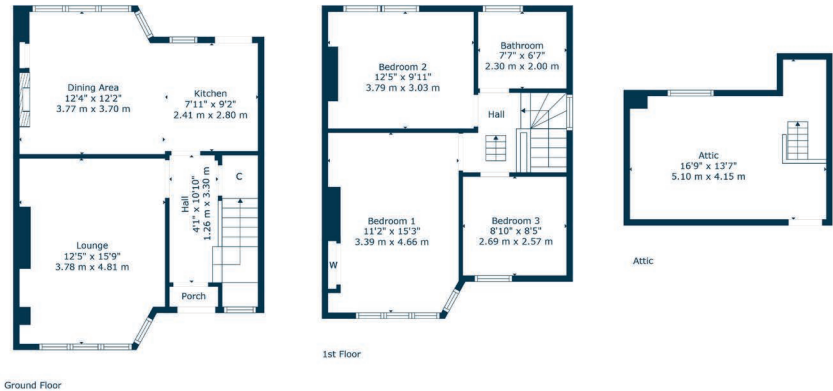
3 | BEDROOMS
1 | BATHROOM
2 | PUBLIC ROOMS

Positioned in established grounds in Strathbungo, this sandstone fronted home originally dates from the early 1900s. Our clients have owned the property for nearly 50 years, upgrading and remodelling it over time to preserve a proposition conducive to modern day living.

- Remodelled end terrace home
- Three versatile bedrooms
- Floored & lined attic
- Sizeable enclosed rear garden
- 350 yards to Queens Park
- Thriving local amenities

Amenities

34 Thorncliffe Gardens is found in the thriving Southside community of Strathbungo where popular independent restaurants, bars and coffee houses are all within walking distance. Queens Park is approximately 350 yards away providing recreational space, tennis courts, football pitches and a fortnightly farmers’ market on its fringe. Pollokshields West, Crossmyloof and Queens Park train stations are all within half a mile of the front door.



Sat Nav:
34 Thorncliffe Gardens, Strathbungo, G41 2DE

SS5063

*All measurements and distances are approximate.
Floorplans are for illustration purposes and may not be to scale.

For the full home report visit
www.corumproperty.co.uk



WE'RE **SOLD** ON
YOUR FUTURE



Corum Shawlands
247 Kilmarnock Road, Shawlands, G41 3JF

Tel: 0141 636 7588
Email: shawlands@corumproperty.co.uk

www.corumproperty.co.uk