



1/2, 6 BEATON ROAD

POLLOKSHIELDS

www.corumproperty.co.uk



3 | BEDROOMS
1 | BATHROOM
1 | PUBLIC ROOM

Well presented and generously proportioned first floor town flat, with excellent privacy to front and rear.

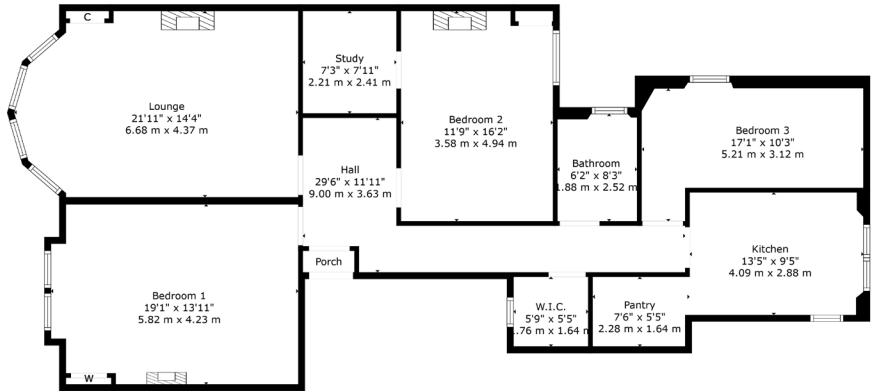
- First floor town flat
- Large bay window lounge
- 3 double sized bedrooms
- Modern kitchen and bathroom
- Part double glazed, gas central heating, secure entry system
- Lovely residents gardens and basement storage

Amenities

6 Beaton Road is positioned within walking distance of shops and amenities in central Pollokshields where a number of popular coffee shops, restaurants and delicatessens can be found. More extensive amenities are available at the Morrison store at Crossmyloof, the Sainsbury's store in Darnley Road or the shopping mall Silverburn at Pollok, a short drive to the West.

Recreational pursuits within the area are varied namely at Maxwell Park and Pollok Country Park where Pollok House and the world-famous Burrell Collection can be found.

Frequent public transport services provide rapid commuter access to the City Centre. The local railway station at Maxwell Park is approximately 300 yards walk.



Sat Nav:
6 Beaton Road, Pollokshields, G41 4LA

SS5073

*All measurements and distances are approximate.
Floorplans are for illustration purposes and may not be to scale.

For the full home report visit
www.corumproperty.co.uk



WE'RE **SOLD** ON
YOUR FUTURE



Corum Shawlands
247 Kilmarnock Road, Shawlands, G41 3JF

Tel: 0141 636 7588

Email: shawlands@corumproperty.co.uk

www.corumproperty.co.uk