



FLAT 12, WHITE GABLES

116 ST ANDREWS DRIVE, POLLOKSHIELDS

www.corumproperty.co.uk



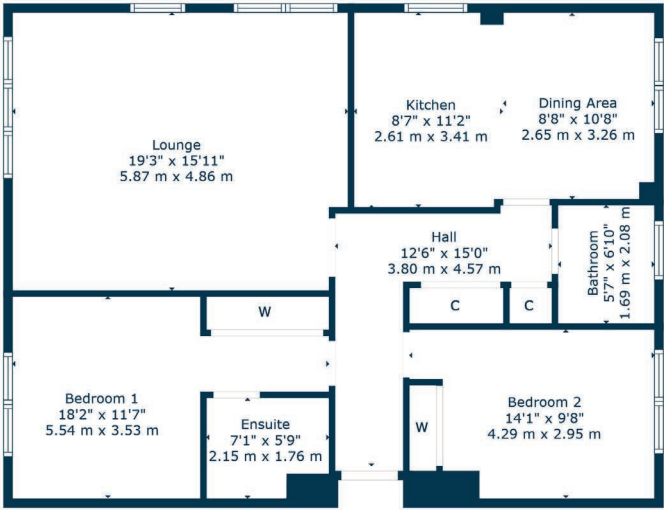
2 | BEDROOMS
1 | BATHROOM
1 | EN-SUITE
1 | PUBLIC ROOM

Occupying a bright treetop position in an admired development by Cala Homes, this two bedroom flat is impeccably presented to market. The property will attract buyers keen on the comfort and convenience of living in a relatively modern building in a leafy cul-de-sac.

- Delightful top floor Cala apartment
- Large double aspect corner lounge
- Integrated dining sized kitchen
- 2 double bedrooms, 1 with en-suite
- Single car garage via electric door
- Lift access
- Across the road from Pollok Park

Amenities

116 St Andrews Drive is within one mile of numerous amenities including the coffee houses, restaurants and gastropubs in Pollokshields and Shawlands. The entrance to Pollok Country Park is across the road and Maxwell Park is 500 yards away. Both of these parks offer vast recreational space. Maxwell Park train station is also nearby. Shields Road underground station is one mile away and junction 1 of the M77 connects the Southside of Glasgow to Scotland’s motorway network.



Sat Nav:
Flat 12, White Gables, 116 St Andrews Drive,
Pollokshields, G41 4RB

SS5075

*All measurements and distances are approximate.
Floorplans are for illustration purposes and may
not be to scale.

For the full home report visit
www.corumproperty.co.uk



WE'RE **SOLD** ON
YOUR FUTURE



Corum Shawlands
247 Kilmarnock Road, Shawlands, G41 3JF

Tel: 0141 636 7588

Email: shawlands@corumproperty.co.uk

www.corumproperty.co.uk