



TREE TOPS



c o r u m

corumproperty.co.uk







6 | BEDROOMS

9 | BATHROOMS

4 | PUBLIC ROOMS

Set behind electric gates and approached through landscaped grounds, this remarkable property is one of Troon's most iconic family homes. Extending to 4,650 sq. ft. and set within around four acres, it combines scale, luxury and lifestyle in equal measure. Feature trees, a koi pond, a tennis court and productive vegetable plots shape the gardens, while magnificent decking flows from the hall, lounge, kitchen and pool suite to create a showpiece for entertaining.

The reception hall is anchored by a striking, one-of-a-kind mantelpiece, reputedly from one of the West of Scotland's famous 'Sisters' homes. From here, the house opens into a formal lounge, a relaxed sitting room, and a modern kitchen complete with integrated appliances, Aga, large wine cooler and space for dining and everyday living. A generous utility and ample storage add practicality.

The pool suite brings wellness into daily life with swimming pool, jacuzzi, steam room, gym area and changing facilities — an indulgent retreat within the home itself.

The principal bedroom is a haven with its own luxurious bathroom, fitted storage and in-room technology. Two further bedrooms enjoy en-suites, while an office with en-suite provides flexibility as a sixth bedroom. A secondary staircase links the pool and utility areas to the upper levels. The top floor offers two more bedrooms, one currently a sewing room with en-suite, and a cupboard housing the home's integrated tech. In total, the property provides six bedrooms (two used as offices) and nine bathrooms.

The gardens extend to approximately four acres, balancing formal landscaping with practical enjoyment. Ornamental planting and a koi pond offer serenity, while the tennis court, extensive decking and vegetable beds provide recreation and productivity.

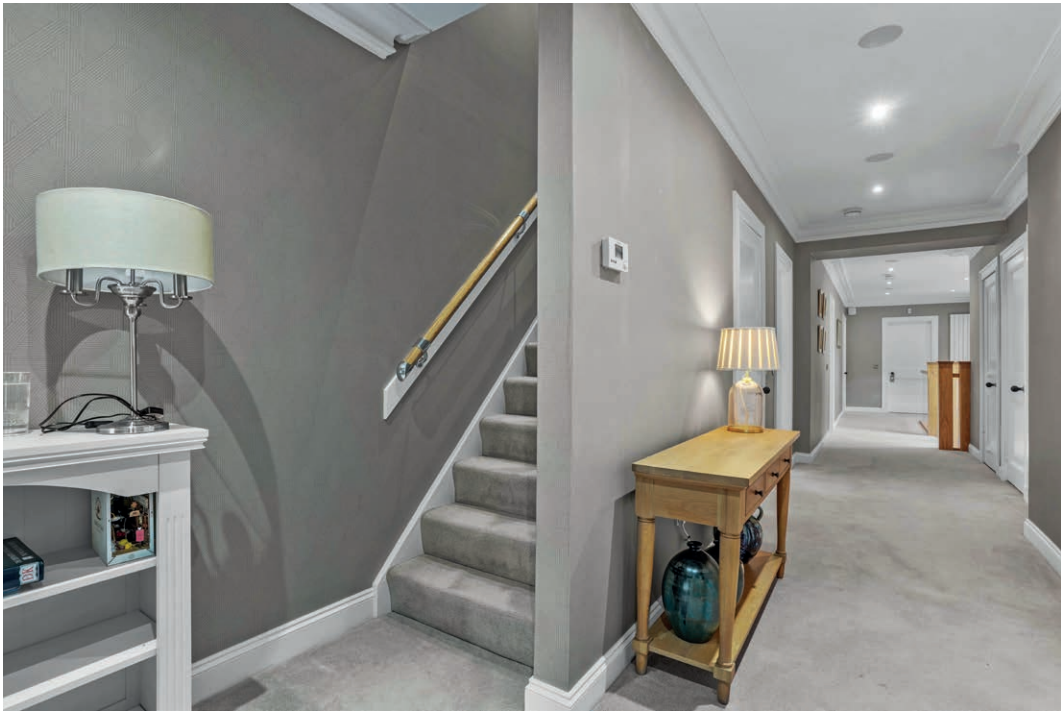


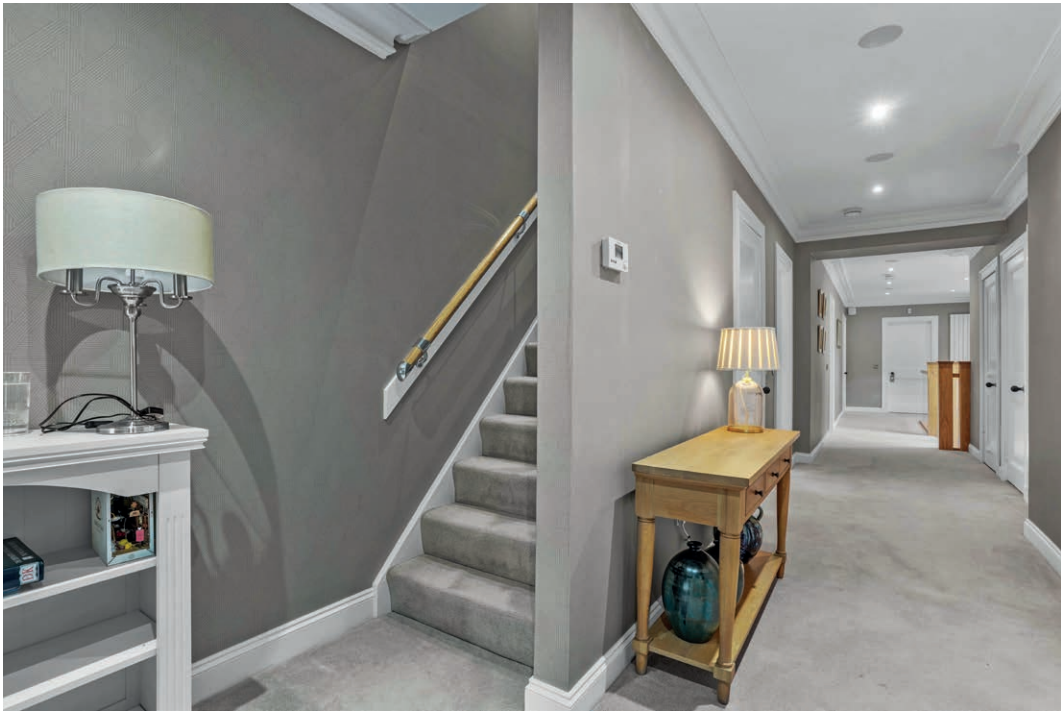




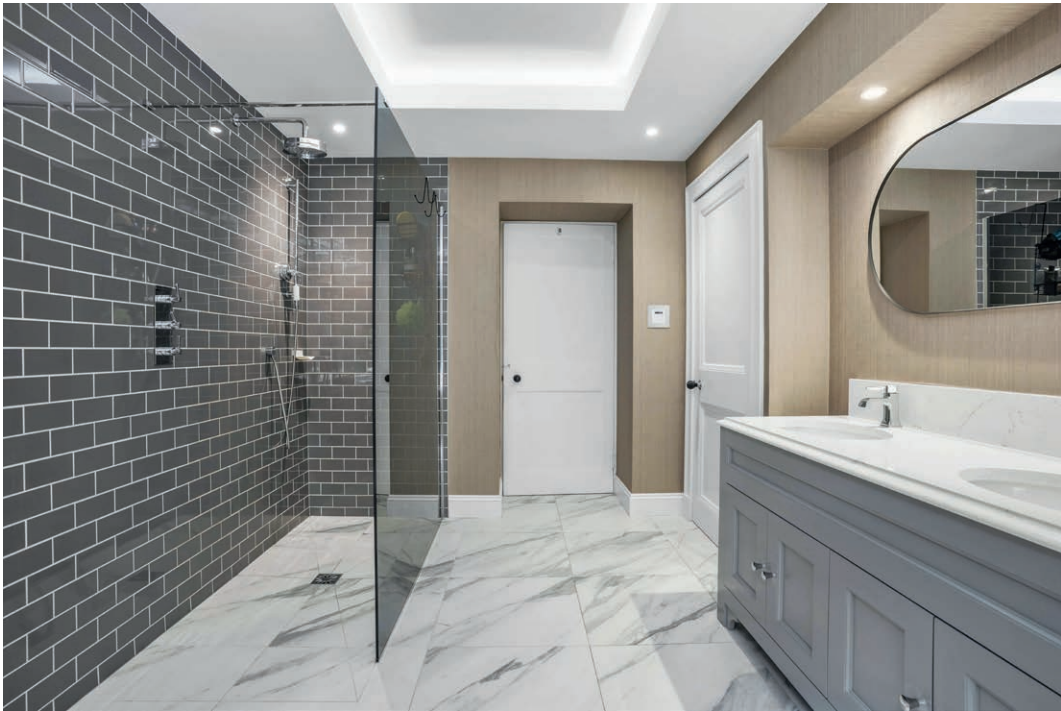










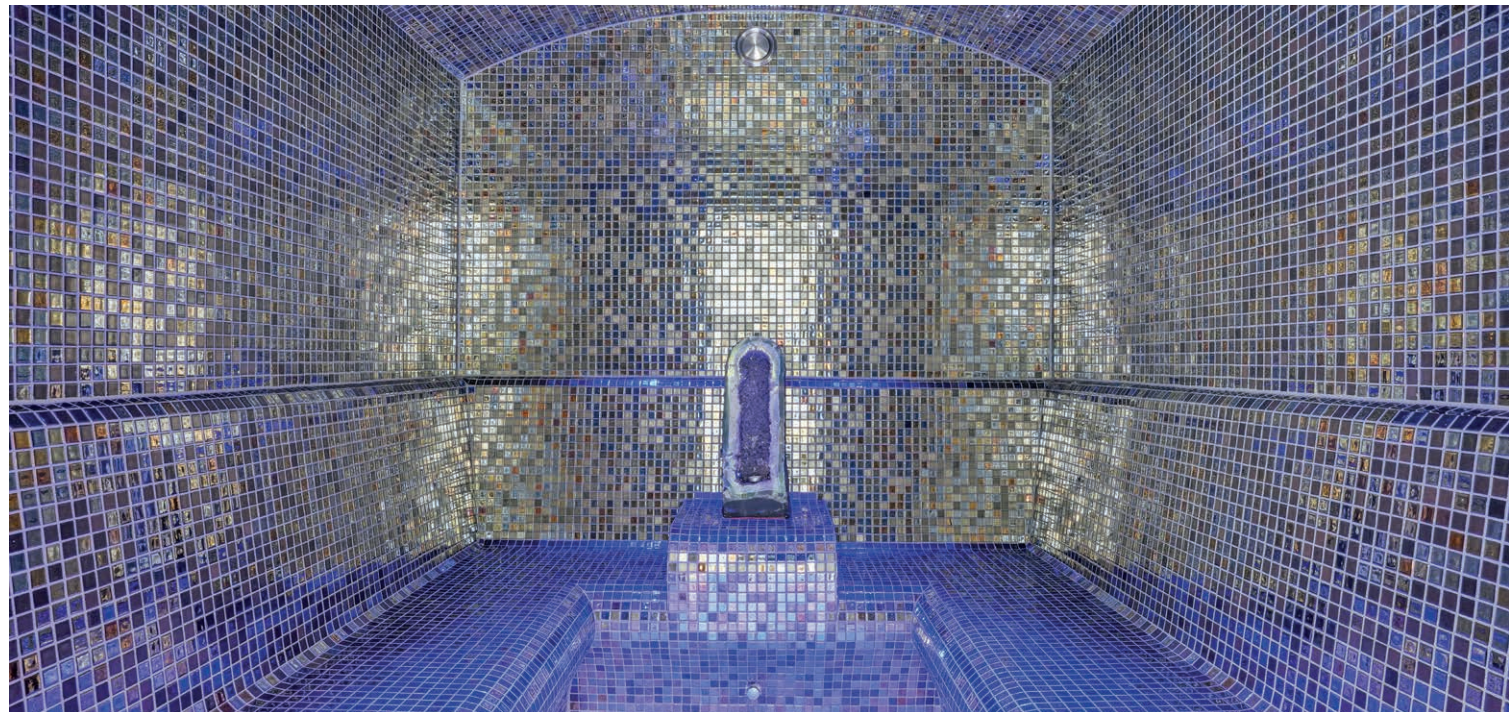






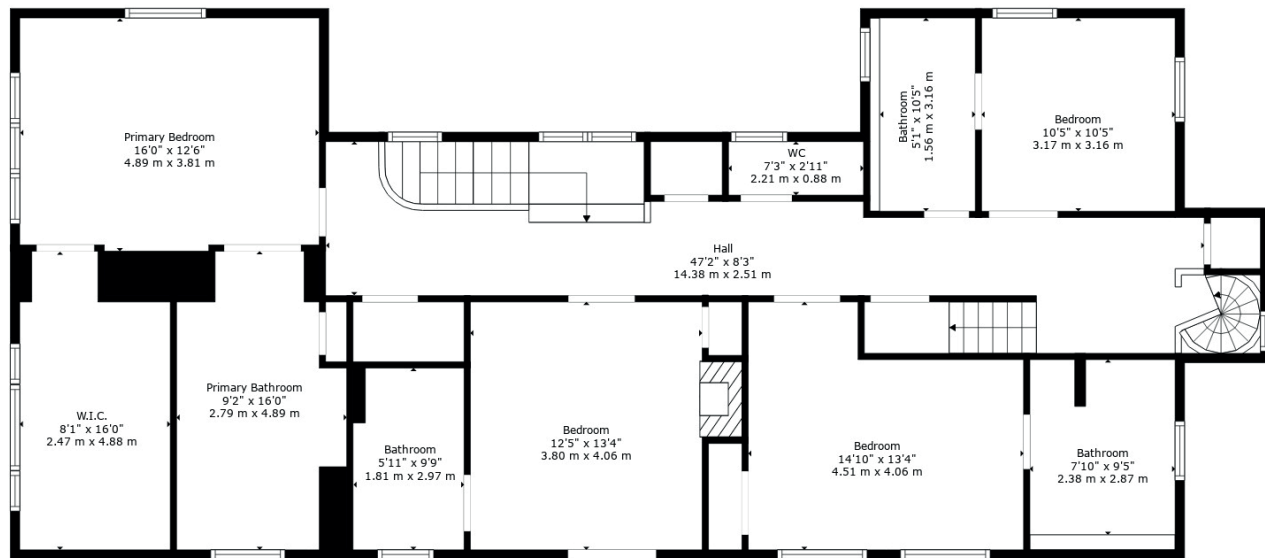




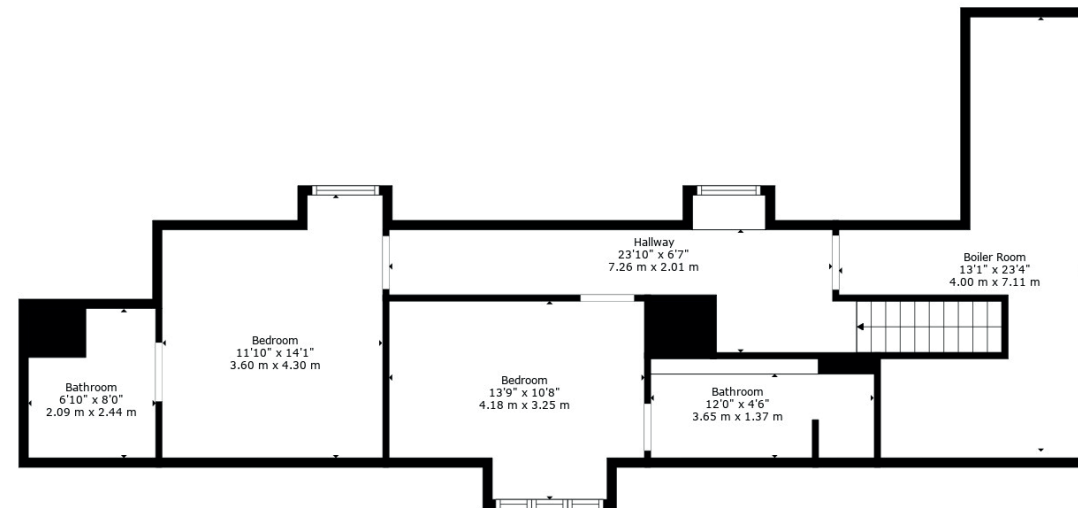




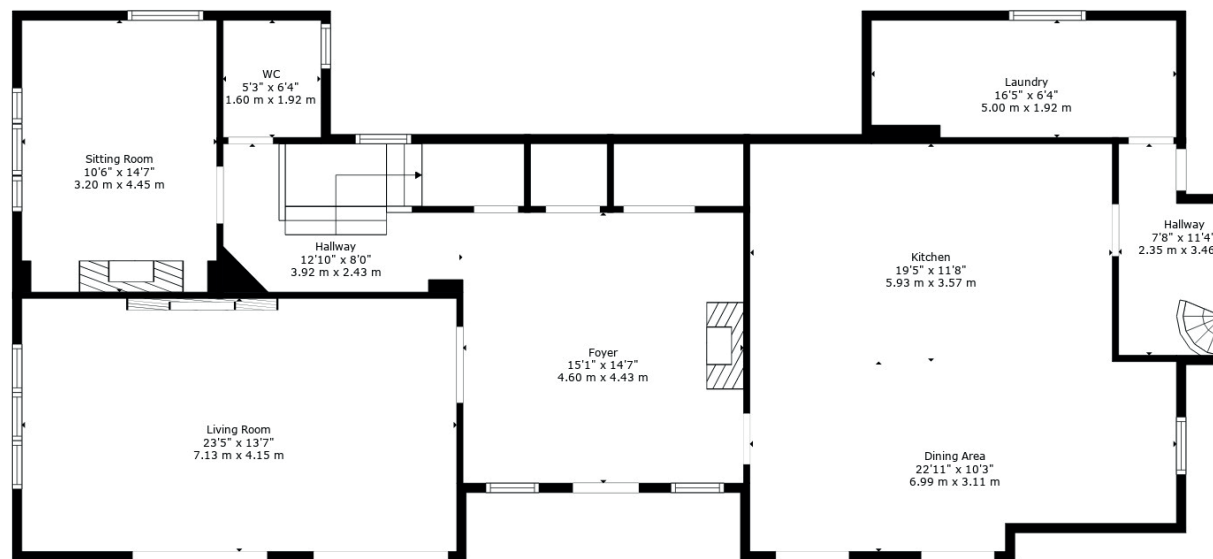
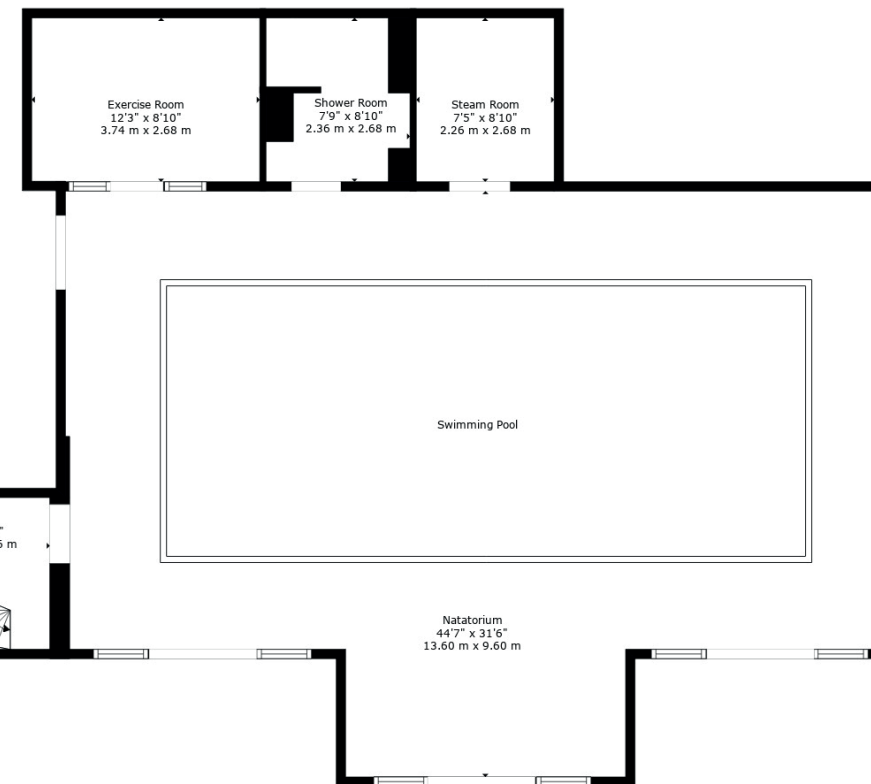




Floor 2



Floor 3



Floor 1

It is a wonderful area in which to reside being a short distance from Troon's three municipal golf courses and a host of local amenities including shops and excellent schooling with Marr College within walking distance. This peaceful, sought after locale is home to a variety of bungalows and villas which enjoy generous plot sizes around two miles from the centre of Troon.

TR1992 | Sat Nav: 2 Wilson Avenue, Troon, KA10 7AF

For the full home report visit www.corumproperty.co.uk

* All measurements and distances are approximate.
Floorplans are for illustration purposes and may not be to scale.





c o r u m

Corum Troon

29 Portland Street, Troon, KA10 6AA

T: 01292 310 010

E: troon@corumproperty.co.uk

corumproperty.co.uk