



1/2 213 WILTON STREET

NORTH KELVINSIDE

www.corumproperty.co.uk





4 | BEDROOMS

1 | BATHROOM

1 | PUBLIC ROOM

A wonderful four-bedroom first floor flat, located in the highly desirable North Kelvinside district.

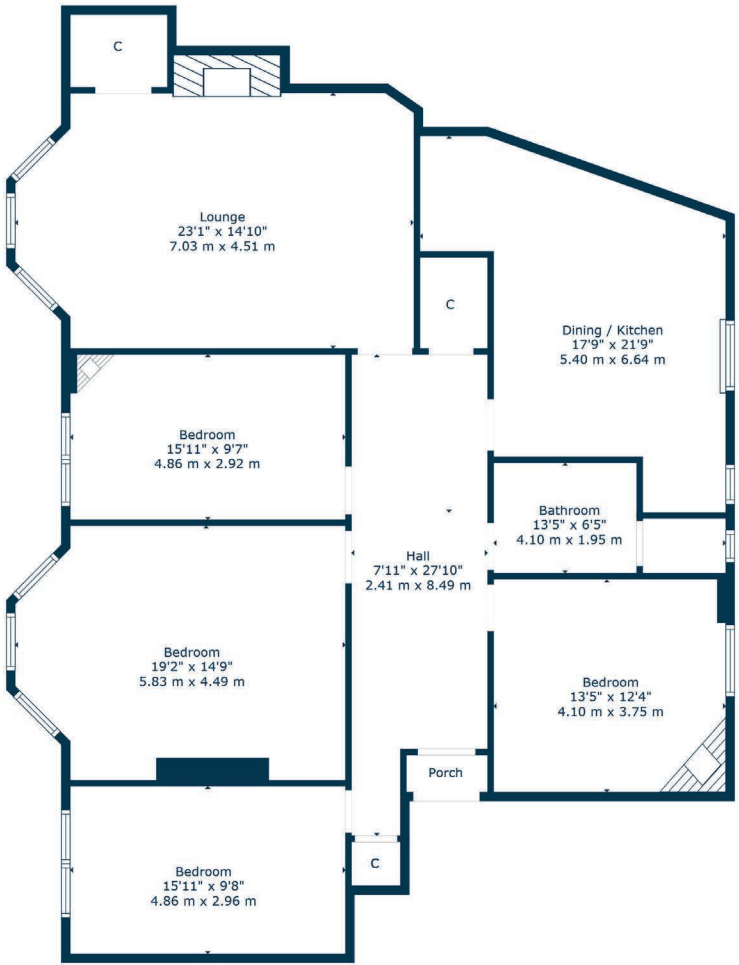
1/2 213 Wilton Street is a magnificent, four-bedroom tenement flat located in the highly desirable North Kelvinside district. Situated on the preferred first floor of this beautiful building, the property offers superb open aspects and flexible living accommodation over five principal apartments.

The property is initially accessed via a secure entry system leading to a very well-maintained residents' communal hall. The generous internal accommodation comprises; entrance vestibule, a large welcoming reception hall with ample storage off, and a stunning bay windowed lounge with wonderful cornice work, feature fireplace, and large store cupboard.

There is a great sized dining kitchen to the rear with an ample selection of base and wall mounted units, and four well-proportioned bedrooms, with the large principal bedroom boasting a bay window. Finally, a stylish bathroom with three-piece suite completes the accommodation on offer.

The property boasts a wealth of space and contemporary features, and has gas central heating, double glazed sash and case windows to the rear, secure entry system and beautifully presented residents' rear communal gardens.





North Kelvinside is close to Byres Road and Great Western Road which provides an array of excellent amenities including bars, restaurants, delicatessens and retailers including Paesano Pizza, Cottonrake Bakery, Roots Fruits & Flowers, La Lanterna and Farrow & Ball. The River Kelvin Walkway, Botanic Gardens and Kelvingrove Park are also nearby.

Public transport is also available with a choice of Kelvinbridge underground, railway and bus routes to Glasgow City Centre and beyond. There is private schooling available at Kelvinside Academy on Kirklee Road and on Great Western Road at Glasgow Academy and The High School of Glasgow. There are also a number of excellent local primary and secondary schools. Glasgow University is situated on University Avenue just off Byres Road, and provides first class further education.

WE5345 | Sat Nav: 1/2 213 Wilton Street, North Kelvinside, Glasgow, G20 6DE

For the full home report visit www.corumproperty.co.uk

* All measurements and distances are approximate Floorplans are for illustration purposes and may not be to scale.



WE'RE **SOLD** ON
YOUR FUTURE



Corum West End
82 Hyndland Road, Glasgow, G12 9UT

Tel: 0141 357 1888

Email: westendenq@corumproperty.co.uk

www.corumproperty.co.uk