



1/1, 14 RIVERFORD COURT

SHAWLANDS

www.corumproperty.co.uk



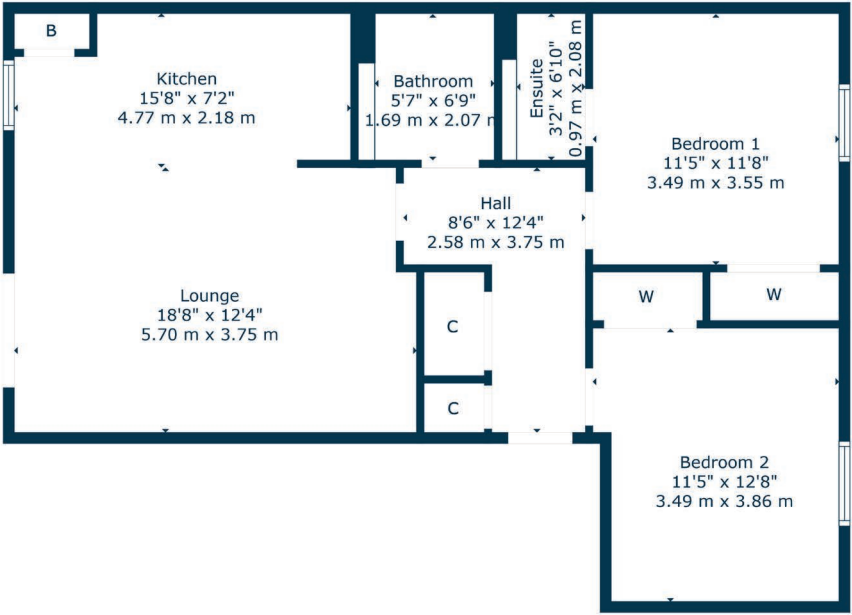
2 | BEDROOMS
2 | BATHROOMS
1 | PUBLIC ROOM

Occupying a bright first floor position in an admired collection of homes this is a wonderful example of a two bedroom apartment. Riverford Court is a very trendy place to live given its quiet cul-de-sac setting and its proximity to countless attractions throughout the Southside.

- Modern apartment in peaceful address
- Bright first floor position
- Open plan living dining kitchen
- Two double sized bedrooms
- Bathroom & en-suite shower
- Designated parking space

Amenities

14 Riverford Court is in close proximity to thriving shops, bars, coffee houses and restaurants in Shawlands and Pollokshaws. Both Pollok Park and Newlands Park are within half a mile of the front door both offering exceptional recreational space. Lidl and Morrisons stores are literally around the corner whilst bus routes and train stations are available within half a mile of the property.



Sat Nav:
1/1, 14 Riverford Court, Shawlands, G43 1FB

SS5102

*All measurements and distances are approximate.
Floorplans are for illustration purposes and may not be to scale.

For the full home report visit
www.corumproperty.co.uk



WE'RE **SOLD** ON
YOUR FUTURE



Corum Shawlands
247 Kilmarnock Road, Shawlands, G41 3JF

Tel: 0141 636 7588

Email: shawlands@corumproperty.co.uk

www.corumproperty.co.uk