



1/2, 129 KENMURE STREET

POLLOKSHIELDS

www.corumproperty.co.uk



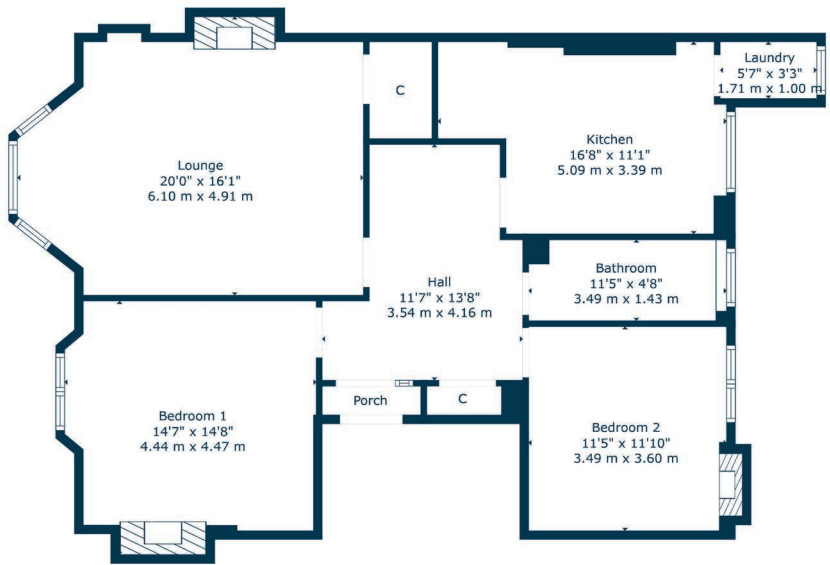
2 | BEDROOMS
1 | BATHROOM
1 | PUBLIC ROOM

Occupying a bright first floor position in a popular pocket of Glasgow's Southside, this large two bedroom home has many attractive features. Situated in a convenient location near numerous amenities and half a mile from the bustling Strathbungo district, the property originally dates from the early 1900's.

- Factored sandstone tenement building
- Impressive dimensions & features
- Two generous double bedrooms
- Fitted dining sized kitchen
- Three piece bathroom suite
- Popular amenities close at hand
- Three original fire surrounds

Amenities

129 Kenmure Street is within the popular, vibrant, multi-cultural area of Pollokshields, with an easy walk to a variety of cafes, restaurants, bars and boutiques. It is also a short walk to the Tramway Arts Centre with its peaceful Hidden Gardens. There are several parks close by, including the attractive Maxwell Park. Recreational pursuits within the area are available at Queens Park, Pollok Country Park and at Titwood Tennis Club. A variety of schools are also close by including the Glasgow Gaelic primary school. Pollokshields East or West train stations are within half a mile of the front door, Shields Road underground station is only one mile away and the M77 connects the Southside of Glasgow to Scotland's motorway network.



Sat Nav:
1/2, 129 Kenmure Street, Pollokshields, G41 2NU

SS5092

*All measurements and distances are approximate.
Floorplans are for illustration purposes and may not be to scale.

For the full home report visit
www.corumproperty.co.uk



WE'RE **SOLD** ON
YOUR FUTURE



Corum Shawlands
247 Kilmarnock Road, Shawlands, G41 3JF

Tel: 0141 636 7588

Email: shawlands@corumproperty.co.uk

www.corumproperty.co.uk