



**FLAT 2/2, 42 MOUNT STUART STREET**

**SHAWLANDS**

[www.corumproperty.co.uk](http://www.corumproperty.co.uk)





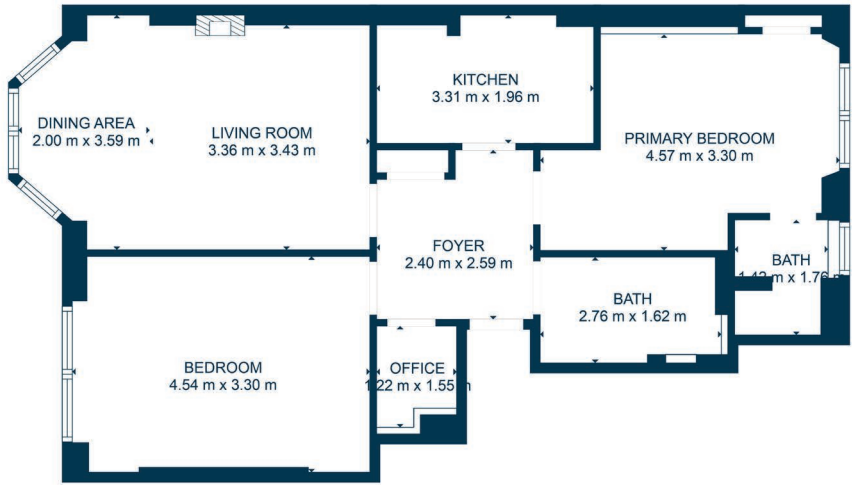
2 | BEDROOMS  
2 | BATHROOM  
1 | PUBLIC ROOM

This second floor home is found in a purpose built tenement building on Mount Stuart Street, a central Shawlands address. The property delivers sleek finishes, full double glazing and gas fired central heating representing a terrific opportunity to live in a thriving part of Glasgow's Southside.

- Stunning second floor tenement flat
- Two double sized bedrooms
- Exceptional finish throughout
- Bathroom & separate en-suite
- Integrated fitted kitchen
- Superb location, amenities & transport

Amenities

42 Mount Stuart Street is in close proximity to all shops, bars, coffee houses, bakeries and restaurants in Shawlands. Sainsbury's, Tesco, Co-op and M&S stores are all within one mile of the property. Queen's Park is approximately 500 yards away providing excellent recreational space and Shawlands Civic Square is also nearby, designed to offer a destination for markets, dance, craft events, speakers and debate.



Sat Nav:  
Flat 2/2, 42 Mount Stuart Street, Shawlands, G41 3LZ

SS5094

\*All measurements and distances are approximate.  
Floorplans are for illustration purposes and may not be to scale.

For the full home report visit  
[www.corumproperty.co.uk](http://www.corumproperty.co.uk)



WE'RE **SOLD** ON  
YOUR FUTURE



Corum Shawlands  
247 Kilmarnock Road, Shawlands, G41 3JF

**Tel:** 0141 636 7588

**Email:** [shawlands@corumproperty.co.uk](mailto:shawlands@corumproperty.co.uk)

[www.corumproperty.co.uk](http://www.corumproperty.co.uk)