



19 YEOMANRY PLACE

AYR

www.corumproperty.co.uk





2 | BEDROOMS

2 | BATHROOMS

1 | PUBLIC ROOM

A stunning and impressive luxury apartment with an outstanding level of accommodation, an executive standard of finishings and unrivalled views across the Firth of Clyde to Arran.

Yeomanry Place is an executive development of first class apartments along the Esplanade in the popular market town of Ayr, with idyllic sea views across to Arran and Ailsa Craig and an uninterrupted panorama of the stunning shoreline. Number 19 is a fantastic example of a two bedroom apartment, with direct sea views from the lounge, the balcony and the dining kitchen, a well-appointed main bathroom and an en suite shower room. There is ample storage throughout, allocated parking at the rear, landscaped communal garden grounds, a lift and a secure video entry system.

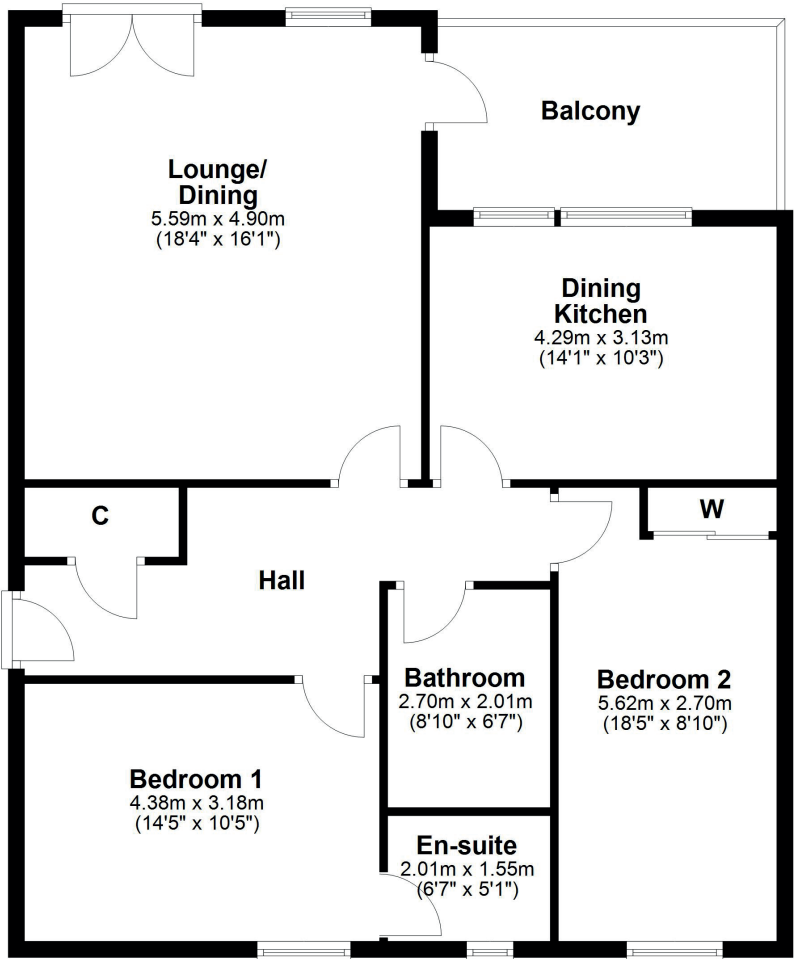
In more detail, the internal accommodation extends to an entrance hallway with a fitted storage cupboard, a spacious lounge with a Juliet balcony looking out to sea at the front and access onto a balcony with direct sea views, a luxury fitted dining kitchen, a double bedroom with an en suite shower room, a second bedroom with fitted wardrobes and a bathroom suite. There is tasteful neutral decor throughout, quality floor coverings and light fittings. There is a communal stairway and lift access to the apartment and a secure door entry system with a video link allowing access at the rear into the building.

Externally the property benefits from a parking area at the rear with allocated spaces and communal garden grounds with a mixture of hard and soft landscaping. There are decorative shrubs, trees, paved pathways and lawn. The Esplanade sits to the front of the building and allows access in towards Ayr town centre and along the shore front.









Yeomanry Place is located immediately on Ayr's delightful seafront and within close proximity to all the amenities offered by the coastal market town of Ayr. There are shops, restaurants and bars, transport links to Glasgow and beyond, supermarkets, schools and leisure facilities. The A77/M77 road network provides swift commuting to Glasgow and surrounding districts. There are also several championship golf courses within Ayrshire, including Royal Troon and Trump Turnberry, regular hosts of the Open Championship.

AY5335 | Sat Nav: 19 Yeomanry Place, Ayr, KA7 1LD

For the full home report visit www.corumproperty.co.uk

* All measurements and distances are approximate Floorplans are for illustration purposes and may not be to scale.



WE'RE **SOLD** ON
YOUR FUTURE



Corum Ayr
10 Beresford Terrace, Ayr, KA7 2EG

Tel: 01292 880 888

Email: ayr@corumproperty.co.uk

www.corumproperty.co.uk