



# 10F MILLBRAE COURT

AYR

[www.corumproperty.co.uk](http://www.corumproperty.co.uk)







**2 | BEDROOMS**

**2 | BATHROOMS**

**2 | PUBLIC ROOMS**

**Luxury Top-Floor apartment with two reception rooms, two bedrooms, en-suite - prime Ayr location. This superb two-bedroom, top-floor apartment sits in an excellent position within Millbrae Court. Featuring a fitted kitchen, a semi open-plan dining room, a generous lounge, two double bedrooms, master en-suite, allocated parking, and immaculate communal gardens - this is sophisticated, secure living in the heart of Ayr.**

Discover elegance and space in this well presented top-floor apartment within the sought-after Mill Brae Court development. Apartment 10F offers a refined lifestyle with two double bedrooms (master en-suite), two reception rooms, and a semi open-plan layout perfect for modern living.

Step into the spacious reception hall where two large storage cupboards provide everyday storage. Both bedrooms are double in size and are fitted with double wardrobes, with the master benefitting from an en-suite with three-piece suite. The main shower room also features a contemporary three-piece suite and stylish finishes.

A fitted kitchen sits adjacent to the formal dining room which is semi open-plan to a generous formal lounge - the ideal layout for entertaining.

Outside, residents enjoy the peace of secure entry, an allocated parking space plus visitors' parking, and beautifully maintained communal gardens.

Ideally located for access to Ayr town centre, seafront and excellent transport links, this exceptional apartment offers comfort, security, and style in a prime residential setting.

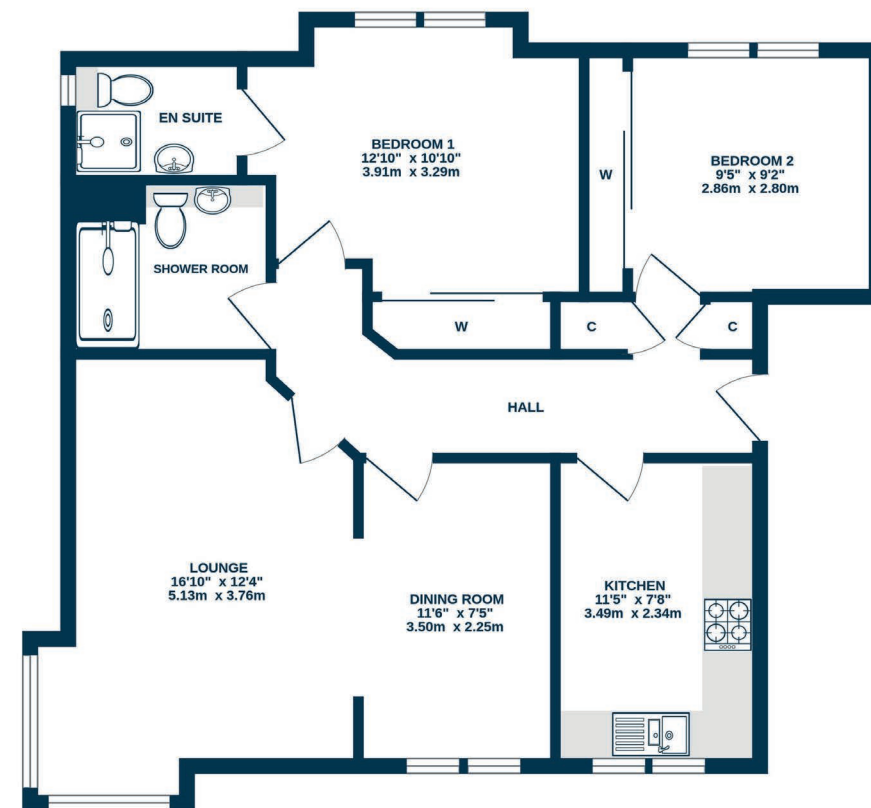








## 2ND FLOOR



10F Millbrae Court enjoys a convenient location in the heart of Ayr, placing a wide range of amenities within easy reach. Just a short distance away, residents will find several major supermarkets including Lidl, Aldi, Tesco and Morrisons. Ayr town centre is within walking distance and provides a variety of local shops, cafes and bars. The property is well connected by public transport, with Ayr train station, offering regular services to Glasgow and surrounding areas. For those who enjoy the outdoors, Ayr harbour and the nearby seafront offer scenic spots for walking and relaxing. Leisure facilities at Bannatynes Health Club and the Citadel, including a gym and swimming pool, are also close by, making this an ideal location.

**AY5352** | Sat Nav: 10F Millbrae Court, Ayr, KA7 3GT

For the full home report visit [www.corumproperty.co.uk](http://www.corumproperty.co.uk)

\* All measurements and distances are approximate Floorplans are for illustration purposes and may not be to scale.





WE'RE **SOLD** ON  
YOUR FUTURE



Corum Ayr  
10 Beresford Terrace, Ayr, KA7 2EG

Tel: 01292 880 888

Email: [ayr@corumproperty.co.uk](mailto:ayr@corumproperty.co.uk)

[www.corumproperty.co.uk](http://www.corumproperty.co.uk)