



22 GORGET QUADRANT

KNIGHTSWOOD

www.corumproperty.co.uk





3 | BEDROOMS

1 | BATHROOM

1 | PUBLIC ROOM

Located within a development backing onto The Forth and Clyde Canal, this spacious and well presented three bedroom maisonette, set over two levels, benefits from a main door entrance and a front and rear gardens.

The generous accommodation comprises:- entrance porch, providing access to a bright and spacious living room, with focal point fireplace. To the rear of the living room, a door provides access to an inner hallway, with two storage cupboard and staircase off to upper apartments. From the inner hallway, access is also provided to a good sized dining kitchen and a patio to the rear of the property. Upstairs, there are three, bright, good sized bedrooms, with the principal benefitting from a fitted storage cupboard, and a shower room, with three piece suite, including fitted vanity unit. There are further fitted storage cupboards located on the upper landing.

Outside, the property benefits from a small patio garden to the front and to the rear.

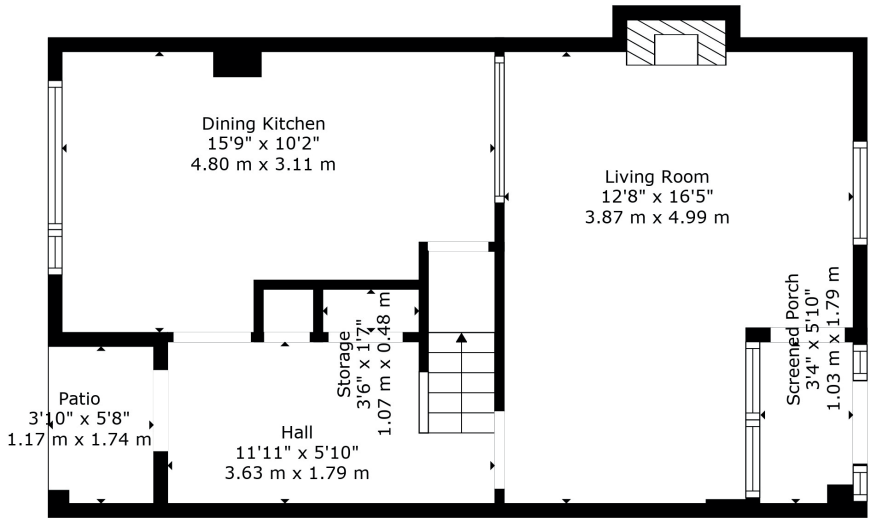




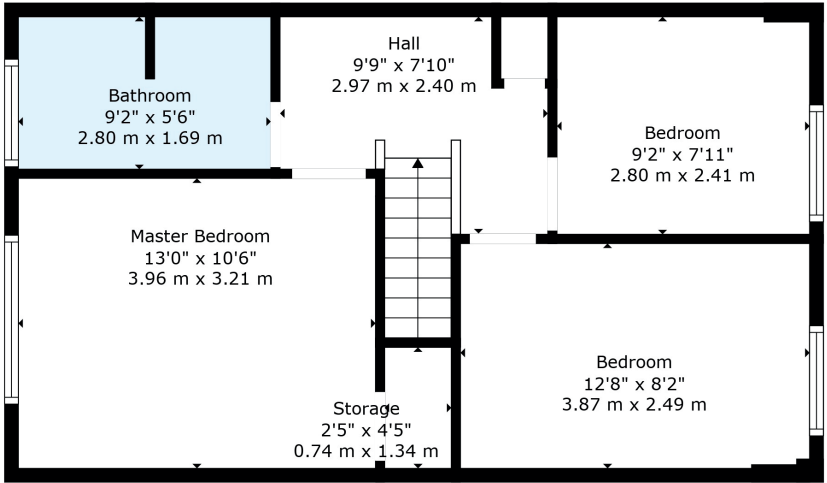




Floor 1



Floor 2



The property is well located for good road access to Glasgow's West End, City Centre, South Side and Loch Lomond. Anniesland Cross offers a selection of shops and there is a Retail Park on Great Western Road, where a further selection of shops can be found. There are main line railway stations at Drumchapel and Anniesland and a bus service operates on Great Western Road. Schooling is available at both primary and secondary levels. There are a number of parks and green spaces nearby, including Knightswood Park and The Forth and Clyde Canal, where pleasant walks can be enjoyed.

BD3920 | Sat Nav: 22 Gorget Quadrant, Knightswood, Glasgow, G13 2AQ

For the full home report visit www.corumproperty.co.uk

* All measurements and distances are approximate Floorplans are for illustration purposes and may not be to scale.



WE'RE **SOLD** ON
YOUR FUTURE



Corum Bearsden
1 Canniesburn Toll, Bearsden, G61 2QU

Tel: 0141 942 5888

Email: bearsdenenq@corumproperty.co.uk

www.corumproperty.co.uk