



5 RANFURLY CHURCH, PRIESTON ROAD

BRIDGE OF WEIR

www.corumproperty.co.uk



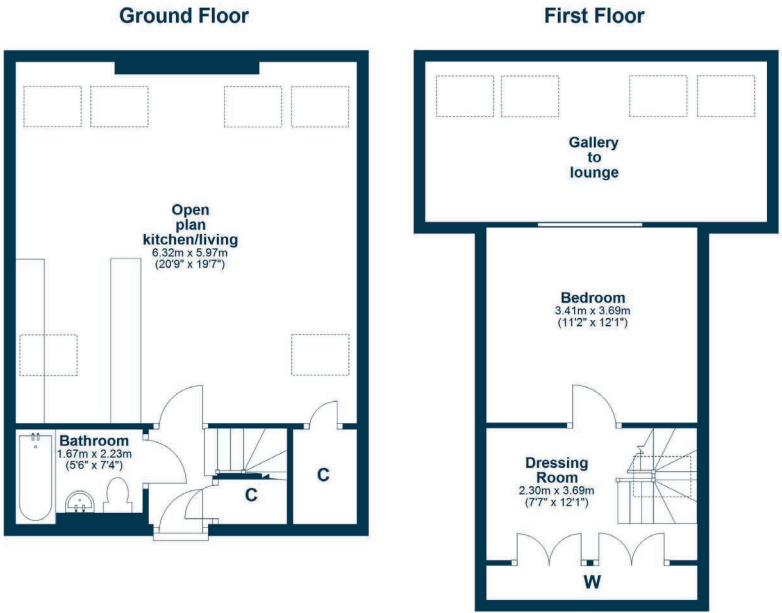
1 | BEDROOM
1 | BATHROOM
1 | PUBLIC ROOM

Stunning Top-Floor Conversion in the historic Ranfurly Church.

- Unique Church Conversion
- Flooded with Natural Light
- Open-Plan Living
- Premium Modern Kitchen
- Striking Split-Level Layout
- Main Bedroom with large dressing room
- Contemporary Three-Piece Bathroom
- Architectural Grandeur

Amenities

Bridge of Weir is a charming village in Renfrewshire, Scotland, known for its picturesque scenery, historic charm, and excellent amenities. The village boasts a range of local shops, cafes, and restaurants, as well as quality schools and leisure facilities, including a golf club and scenic walking trails along the River Gryffe. Transport links are convenient, with regular bus services to nearby Glasgow and Paisley, and the nearby Johnstone railway station providing quick access to central Glasgow in 15 minutes. Offering a peaceful, countryside lifestyle while remaining well-connected to urban centers, Bridge of Weir is ideal for families and professionals seeking a balance of rural tranquility and modern convenience.



Sat Nav:
5 Ranfurly Church, Prieston Road, Bridge of Weir, PA11 3AQ

BW2574

*All measurements and distances are approximate.
Floorplans are for illustration purposes and may not be to scale.

For the full home report visit
www.corumproperty.co.uk



WE'RE **SOLD** ON
YOUR FUTURE



Corum Bridge of Weir
2 Windsor Place, Main Street, Bridge Of Weir, PA11 3AF

T: 01505 691 400

E: bridgeofweir@corumproperty.co.uk

www.corumproperty.co.uk