



29 BEVAN GROVE

JOHNSTONE

www.corumproperty.co.uk



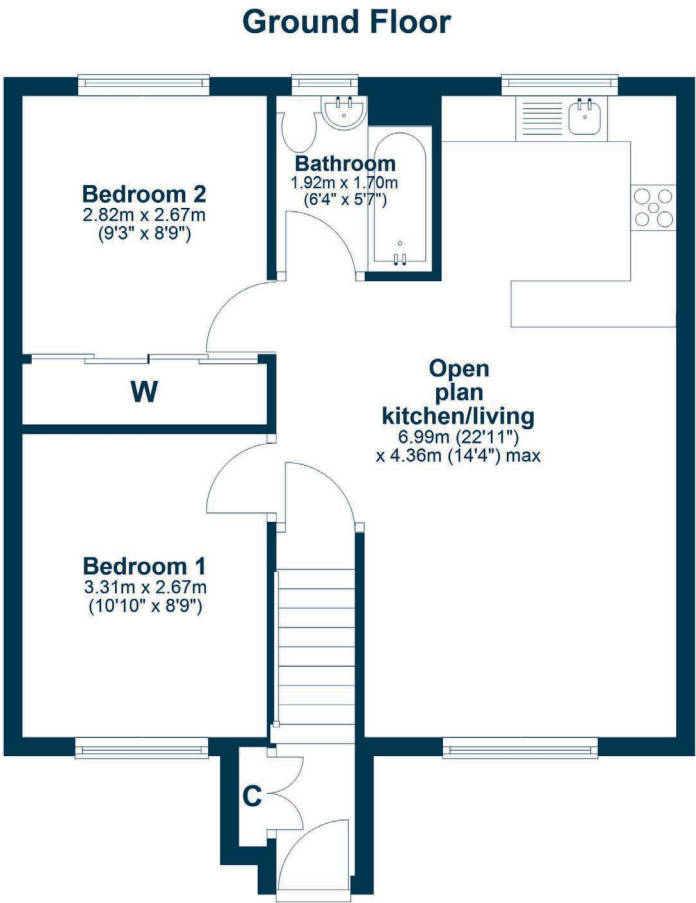
2 | BEDROOMS
1 | BATHROOM
1 | PUBLIC ROOM

Stylish Upper-Floor Two-Bedroom Flat in a prime Johnstone location.

- Spacious Two-Bedroom Layout
- Bright Open-Plan Living Area
- Contemporary Kitchen with Solid Wood Worktops
- Upper-Floor Position
- Private Garden
- Large Garden Shed
- Modern Bathroom
- Ideal Location

Amenities

Johnstone is a vibrant town in Renfrewshire, offering a mix of urban convenience and community charm. The town features a range of amenities, including high street shops, supermarkets, cafes, and leisure facilities such as the Johnstone Sports Centre and nearby parks like Robertson Park. Transport links are excellent, with Johnstone Railway Station providing direct services to Glasgow (around 20 minutes) and Paisley, while major roads like the M8 ensure easy access by car. With affordable housing, good schools, and a lively local events scene, Johnstone appeals to families, commuters, and those seeking a friendly, well-connected place to live close to Glasgow's opportunities.



Sat Nav:
29 Bevan Grove, Johnstone, PA5 8TP

BW2673

*All measurements and distances are approximate.
Floorplans are for illustration purposes and may not be to scale.

For the full home report visit
www.corumproperty.co.uk



WE'RE **SOLD** ON
YOUR FUTURE



Corum Bridge of Weir
2 Windsor Place, Main Street, Bridge Of Weir, PA11 3AF

T: 01505 691 400

E: bridgeofweir@corumproperty.co.uk

www.corumproperty.co.uk