



29 TEUCHEEN CIRCLE

GILCHRIST GARDENS

www.corumproperty.co.uk





3 | BEDROOMS

3 | BATHROOMS

2 | PUBLIC ROOMS

Located in Cala Homes new Gilchrist Gardens development, this three-bedroom end-terrace home is presented in immaculate condition with a charming forest backdrop.

This stylish three-bedroom end-terrace home in Cala Homes' sought-after Gilchrist Gardens development is positioned at the rear of the estate with a serene forest backdrop, this property combines contemporary living with low-maintenance ease. Boasting parking for multiple cars, a beautifully landscaped frontage, and a private rear garden with direct woodland access.

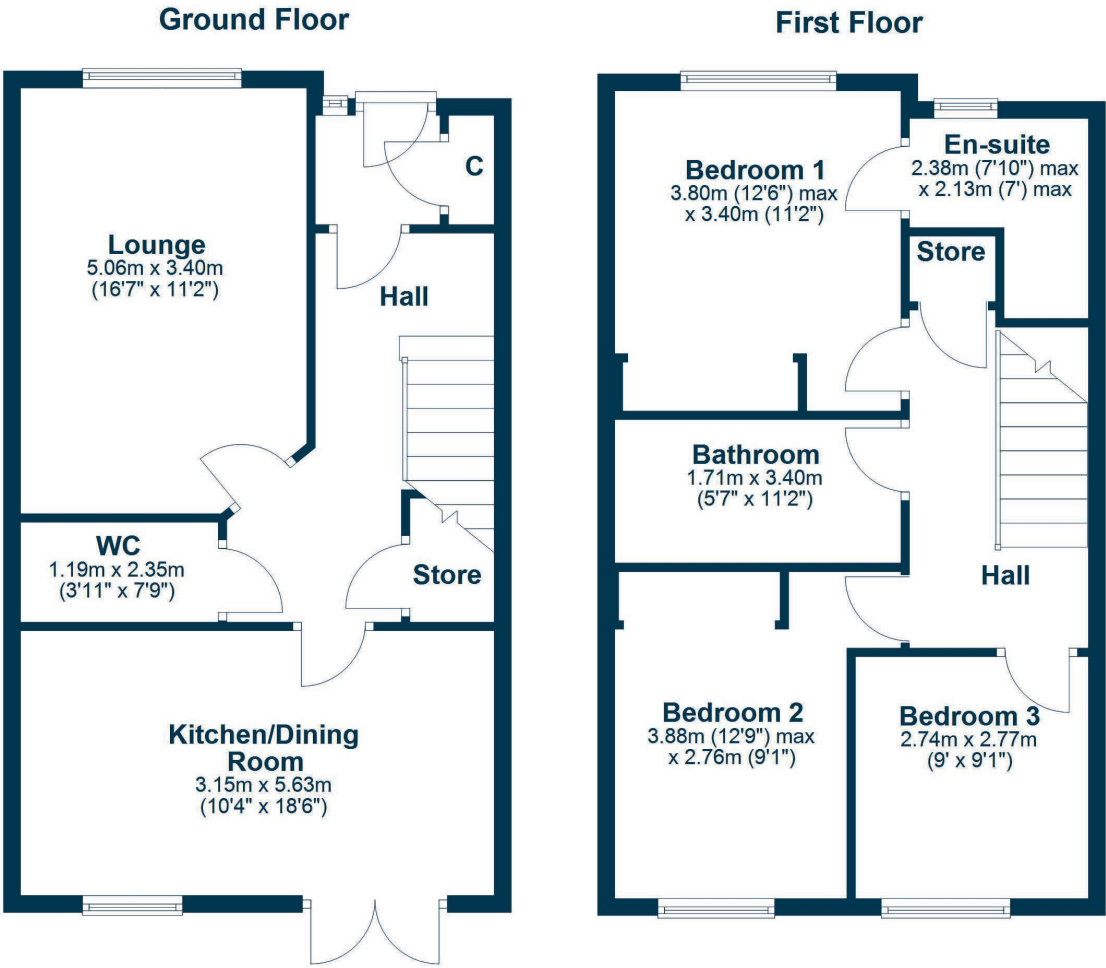
Entry into a welcoming entrance hall featuring a storage closet and a convenient guest WC. To the front, the formal lounge offers a bright and inviting space. The heart of the home lies to the rear, a sleek, open-plan kitchen/diner fitted with a range of modern base and wall-mounted units, designed for both functionality and style. French doors seamlessly connect the dining area to the rear garden.

On the upper floor, there are three generous double bedrooms, all with fitted storage, provide ample space for family or guests. The principal bedroom enjoys a three-piece ensuite shower room, while a well-appointed three-piece family bathroom (with an over-bath shower) serves the remaining bedrooms.

This beautifully presented home also features solar panels for added energy efficiency.

The home's low-maintenance rear garden features a fully insulated garden house, currently fitted as a bar but versatile enough to serve as a home office or entertainment space. A rear gate provides direct access to Teucheen Woodland, perfect for peaceful strolls or dog walking. To the front, the property's attractive facade is enhanced by landscaped flower beds, while multiple parking spaces ensure practicality.





Cala Homes' Gilchrist Gardens is a prestigious new development situated in the highly desirable area of Erskine, offering an ideal blend of peaceful suburban living and excellent connectivity. Nestled close to the Clyde River with beautiful green spaces nearby, the estate provides a tranquil setting while being just moments from Erskine's amenities. For outdoor enthusiasts, Erskine Riverside Park offers scenic walks along the Clyde. Commuters will appreciate the superb transport links, with easy access to the M8 motorway for quick connections to Glasgow (20 minutes) and Edinburgh, while Bishopton train station (just 5 minutes away) offers regular services to Glasgow Central in under 15 minutes. With Glasgow Airport only a 10-minute drive, Gilchrist Gardens is perfectly positioned for both local convenience and wider travel.

BW2672 | Sat Nav: 29 Teucheen Circle, Gilchrist Gardens, PA8 7FB

For the full home report visit www.corumproperty.co.uk

* All measurements and distances are approximate Floorplans are for illustration purposes and may not be to scale.



WE'RE **SOLD** ON
YOUR FUTURE



Corum Bridge of Weir
2 Windsor Place, Main Street, Bridge Of Weir, PA11 3AF

T: 01505 691 400

E: bridgeofweir@corumproperty.co.uk

www.corumproperty.co.uk