



## CREAG-AN-FHITHICH

14 FETLAR ROAD, BRIDGE OF WEIR

[www.corumproperty.co.uk](http://www.corumproperty.co.uk)







5 | BEDROOMS

2 | BATHROOMS

2 | PUBLIC ROOMS

**An attractive traditional semi-detached villa extended to provide flexible and spacious family accommodation convenient for the village centre of Bridge of Weir.**

Creag-An-Fhithich is an attractive traditional home positioned within an established residential cul-de-sac. This has convenient access to the numerous facilities of Bridge of Weir village centre. Attractive with families Bridge of Weir offers a village lifestyle with good local shopping and amenities including highly regarded local primary school, nursery facilities and within catchment area for the highly regarded Gryffe High School in Houston. This west Renfrewshire village has good road links with access via the A737 to Glasgow international airport and connections to the M8 motorway network leading to Glasgow city centre.

This property occupies an elevated position with a Monoblock driveway and an integral single sized garage. The rear garden is terraced, the low compartment has an area of lawn with display bed borders and a path leading to the front driveway. The property was extended to now provide an extremely generous layout that can be reconfigured to suit the needs of modern families. The specification of the home does include a modern gas fired central heating system and upgraded replacement UPVC double glazed external windows.

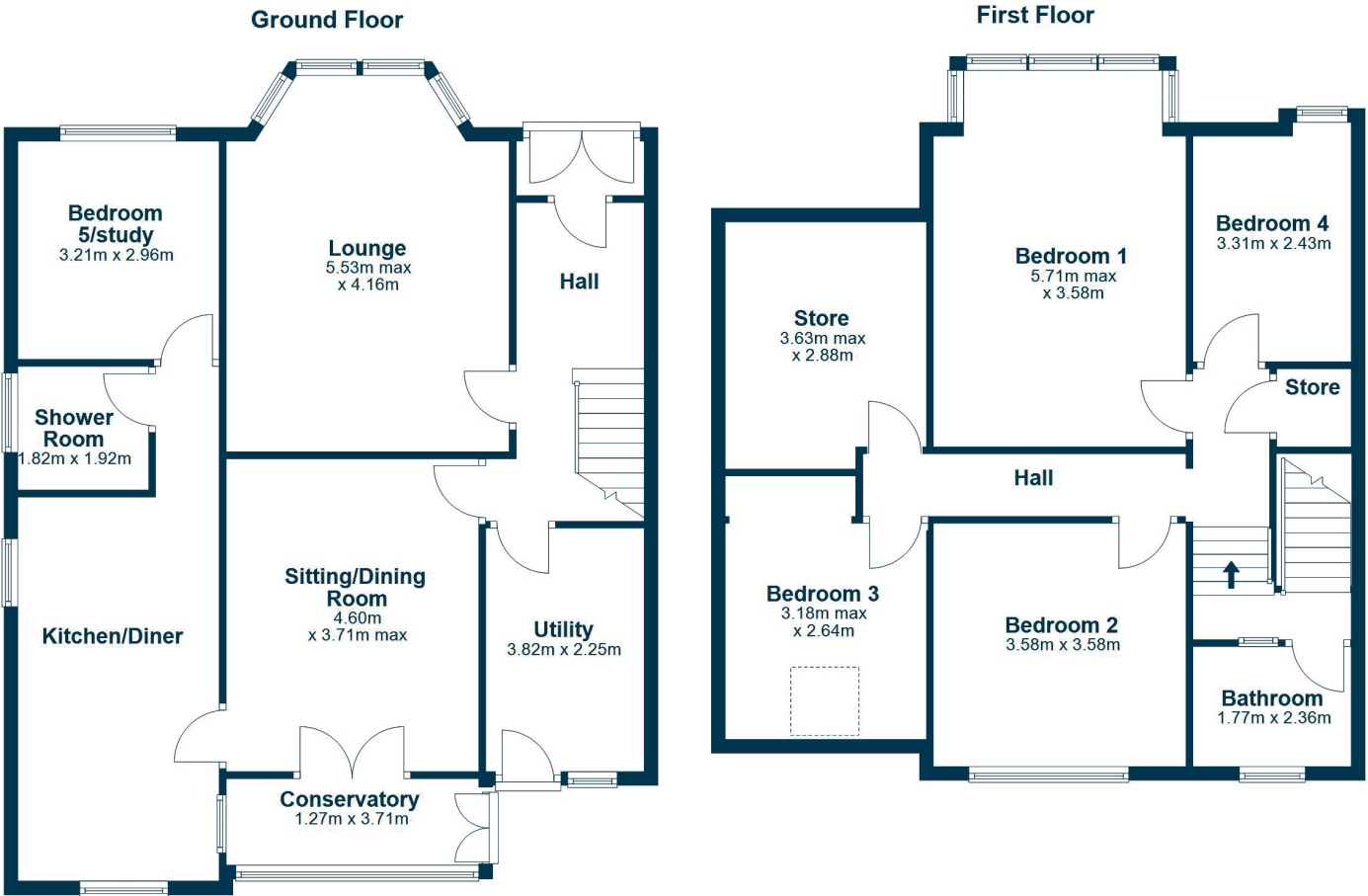
The accommodation comprise of steps leading to the front entrance vestibule opening into the reception hallway with a stairwell to the upper floor. The formal lounge is a spacious apartment with large front facing bay window formation and a timber fireplace with a gas stove and wooden flooring. The family sitting and dining room is a large apartment again with a timber fire surround and a gas fired stove that has twin French doors giving access to a small rear conservatory overlooking the rear garden. There is a large utility room with space for laundry appliances and a door to the rear gardens. The kitchen has space for a dining table and chairs with a range of traditional timber front storage cupboards and timber work surface above. There are modern built in appliances including a double oven, combination microwave and gas hob with space for further slot in appliances. This area has steps leading to a shower room and a downstairs 5th bedroom which could be used as a home office or study.

A broad stair leads to a half landing with access to a modern tiled bathroom with a four piece suite comprising of a bowl style wash hand basin with mixer tap, WC, Bath and separate corner position shower area. On the upper floor to the property there is access to the impressive main bedroom which has a projecting box bay window allowing fine views over the village and a full range of fitted bedroom furniture and wardrobes. There are three further bedrooms on this level and a large storeroom.









Bridge of Weir has good road links towards the M8 motorway, Glasgow International Airport and Glasgow city centre. The village offers a wide range of local amenities including restaurants, shops and a library. The village has a popular Primary School with a nursery and secondary education is at the prestigious Gryffe High School. There is also private schooling nearby at St. Columba's in Kilmacolm. The village has two 18-hole golf courses and there is fishing available on the River Gryffe.

**BW2661** | Sat Nav: Creag-An-Fhithich, 14 Fetlar Road, Bridge of Weir, PA11 3AX

For the full home report visit [www.corumproperty.co.uk](http://www.corumproperty.co.uk)

\* All measurements and distances are approximate Floorplans are for illustration purposes and may not be to scale.





WE'RE **SOLD** ON  
YOUR FUTURE



Corum Bridge of Weir  
2 Windsor Place, Main Street, Bridge Of Weir, PA11 3AF

T: 01505 691 400

E: [bridgeofweir@corumproperty.co.uk](mailto:bridgeofweir@corumproperty.co.uk)

[www.corumproperty.co.uk](http://www.corumproperty.co.uk)