



**2 WORSLEY CRESCENT**

NEWTON MEARNS

[www.corumproperty.co.uk](http://www.corumproperty.co.uk)







**3 | BEDROOMS**

**2 | BATHROOMS**

**2 | PUBLIC ROOMS**

**An extended detached villa set within significant sized, fully enclosed garden grounds with two driveways and garage.**

Occupying a prominent corner setting within particularly large, fully enclosed garden grounds, Corum are delighted to present to the market this extended detached villa that benefits from a superb location, provides catchment for local high achieving schooling and many local amenities.

Notable features include two driveways, one to the front and one to the rear, detached garage with power and light and the property has been enhanced by a large extension to the side and double glazed conservatory to the rear.

Traditional style reception hallway with access to downstairs shower room/WC, built in laundry cupboard housing appliances, principal lounge, family area leading to large dining kitchen with dual aspects and French doors to decking and gardens, and a double glazed conservatory completes the ground floor. Landing area providing two storage cupboards, giving access to three bedrooms and a modern bathroom.

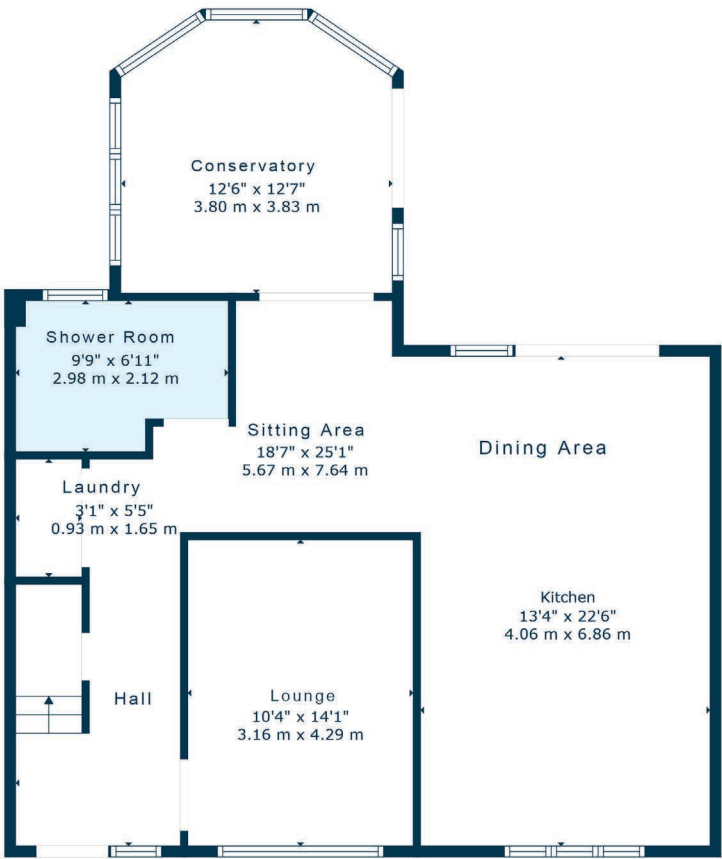
The property has a system of gas central heating (boiler approximately 4 years old), double glazed windows and doors.

The gardens are undoubtedly one of the main features of the property and offer an expansive lawn area, large decking area and canopied outside al-fresco dining area. Detached garage to the rear fitted with power and light. Garden shed.

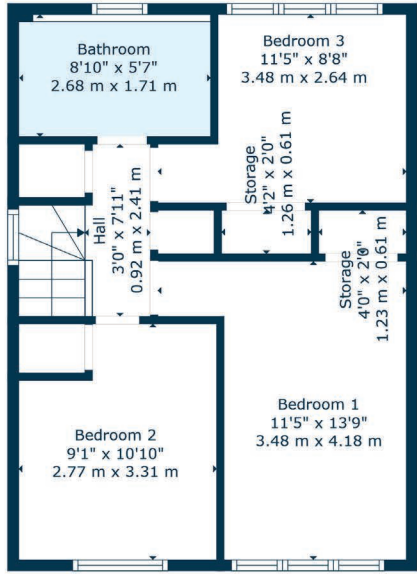








Floor 1



Floor 2

Situated within a highly sought after pocket of Newton Mearns, the property is superbly placed for a wide range of amenities and indeed nationally recognised schooling. A wide variety of restaurants, supermarkets and retailers can be found at the nearby Mearns Cross Shopping Centre and Greenlaw Village, and there are a range of sports and leisure activities found within the district including parks, health clubs, gyms and golf courses. Excellent local transport links providing swift access to the city centre and beyond are also close at hand with Whitecraigs Station and Patterton Station being the nearest.

**NM4624** | Sat Nav: 2 Worsley Crescent, Newton Mearns, G77 6DW

For the full home report visit [www.corumproperty.co.uk](http://www.corumproperty.co.uk)

\* All measurements and distances are approximate Floorplans are for illustration purposes and may not be to scale.



WE'RE **SOLD** ON  
YOUR FUTURE



Corum Newton Mearns  
134 Ayr Road, Newton Mearns, G77 6EG

**Tel:** 0141 639 5888

**Email:** [n.mearns@corumproperty.co.uk](mailto:n.mearns@corumproperty.co.uk)

[www.corumproperty.co.uk](http://www.corumproperty.co.uk)