



**FLAT 1/4, 233B THORNLIBANK ROAD**

**THORNLIBANK**

[www.corumproperty.co.uk](http://www.corumproperty.co.uk)







**2 | BEDROOMS**

**2 | BATHROOMS**

**1 | PUBLIC ROOM**

**Beautifully appointed luxury apartment providing copious space, great flexibility and would suit a variety of potential purchasers.**

Forming part of this highly popular residential development by Bellway Homes, Corum are delighted to present to the market this first floor apartment that provides generous and extremely well appointed accommodation. The building retains a high level of privacy, seclusion and yet is well placed for many nearby amenities. Notable features include, security entrance system, high performance double glazed windows, gas central heating system, luxury bathrooms, Amtico flooring throughout and the interior of the flat is presented in pristine condition throughout.

The well portioned accommodation in brief extends to reception hallway with generous storage provided, lovely open plan and spacious lounge, kitchen and dining area with Juliet balcony, kitchen with a full range of integrated appliances, principal bedroom with walk in wardrobe, and en-suite shower room, second well proportioned bedroom and main bathroom completes the accommodation.

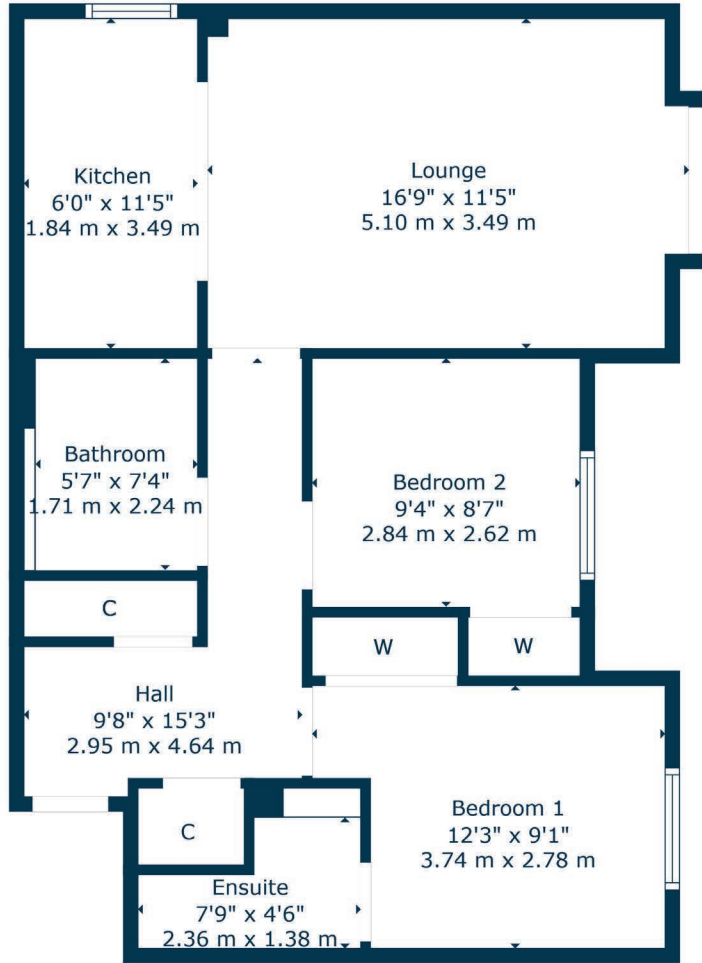
Set within communal residents' grounds that feature private and visitor parking. The development is factored handling all aspects of management of the grounds and cleaning of the common areas.

This luxury property offers high end specification throughout and would be the perfect opportunity for the young professional or downsizing market. The floorplan shall provide you with a detailed layout of this impressive home, however we recommend viewing to appreciate the space, versatility, and convenient setting that is on offer.









Perfectly placed to take advantage of all local amenities in nearby Giffnock, Newton Mearns and Thornliebank. The development is perfectly placed for a variety of amenities which include Mearns Cross Shopping Centre which is a short drive away, Greenlaw Village which offers Waitrose and excellent further shopping facilities, nearby motorway links and Deaconsbank Golf course and Thornliebank Train Station are a short distance away. An abundance of sports and leisure facilities are available within East Renfrewshire including Pure Gym, David Lloyd Sports Club, Whitecraigs Golf Club, Giffnock and Whitecraigs Tennis Clubs and Rouken Glen Park.

**NM4627** | Sat Nav: Flat 1/4, 233b Thornliebank Road, Thornliebank, G46 7RG

For the full home report visit [www.corumproperty.co.uk](http://www.corumproperty.co.uk)

\* All measurements and distances are approximate Floorplans are for illustration purposes and may not be to scale.





WE'RE **SOLD** ON  
YOUR FUTURE



Corum Newton Mearns  
134 Ayr Road, Newton Mearns, G77 6EG

**Tel:** 0141 639 5888

**Email:** [n.mearns@corumproperty.co.uk](mailto:n.mearns@corumproperty.co.uk)

[www.corumproperty.co.uk](http://www.corumproperty.co.uk)