



**8 CULZEAN CRESCENT**

NEWTON MEARNS

[www.corumproperty.co.uk](http://www.corumproperty.co.uk)





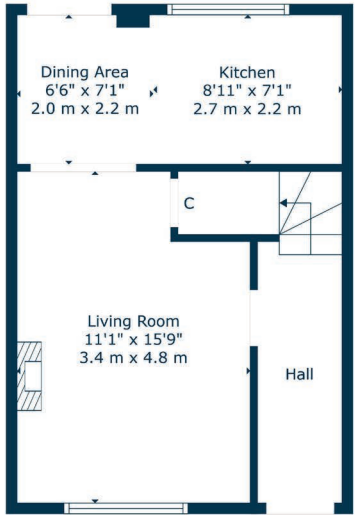
3 | BEDROOMS  
2 | BATHROOMS  
1 | PUBLIC ROOM

Corum are delighted to present to the market this three bedroom extended semi detached family home that occupies a splendid location.

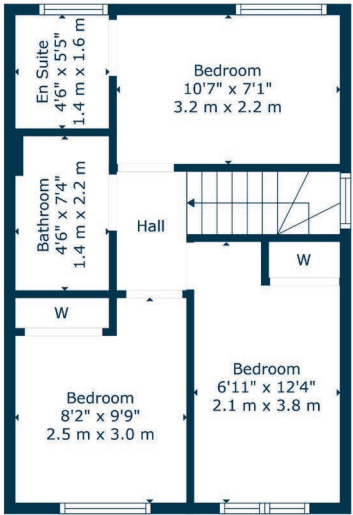
- Bright and modern interior in a lovely private setting.
- Near Kirkhill and Mearns Castle schooling.
- Recently installed luxury bathroom and en-suite.
- Modern designed lounge through to dining room open to fitted kitchen.
- Three bedrooms.
- Level south facing gardens with driveway and garage.

Amenities

Newton Mearns is one of the most sought-after suburbs within the south side of Glasgow. The property is superbly placed for a wide range of amenities and indeed nationally recognised schooling. The property is a short distance away from excellent shopping at The Avenue at Mearns Cross and Greenlaw Village. There are an abundance of sports and recreational facilities found within the district which include excellent golf courses, parks, tennis clubs and there are a variety of country pursuits found nearby at Hazeldene. Local train stations include Whitecraigs Station and Patterton Station.



Floor 1



Floor 2

Sat Nav:  
8 Culzean Crescent, Newton Mearns, G77 5TA

NM4632

\*All measurements and distances are approximate.  
Floorplans are for illustration purposes and may not be to scale.

For the full home report visit  
[www.corumproperty.co.uk](http://www.corumproperty.co.uk)





WE'RE **SOLD** ON  
YOUR FUTURE



Corum Newton Mearns  
134 Ayr Road, Newton Mearns, G77 6EG

**Tel:** 0141 639 5888

**Email:** [n.mearns@corumproperty.co.uk](mailto:n.mearns@corumproperty.co.uk)

[www.corumproperty.co.uk](http://www.corumproperty.co.uk)