



15 KILORAN GROVE

NEWTON MEARNS

www.corumproperty.co.uk


c o r u m



3/4 | BEDROOMS

2 | BATHROOMS

3 | PUBLIC ROOMS

Number 15 Kiloran Grove is a significantly extended and contemporary redesigned detached family home that enjoys a high degree of privacy within a cul-de-sac setting.

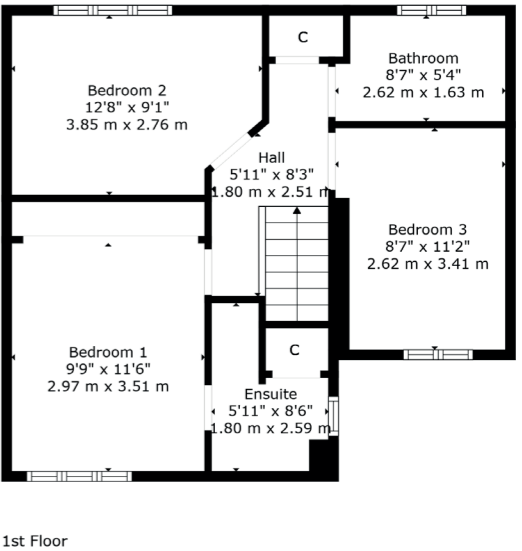
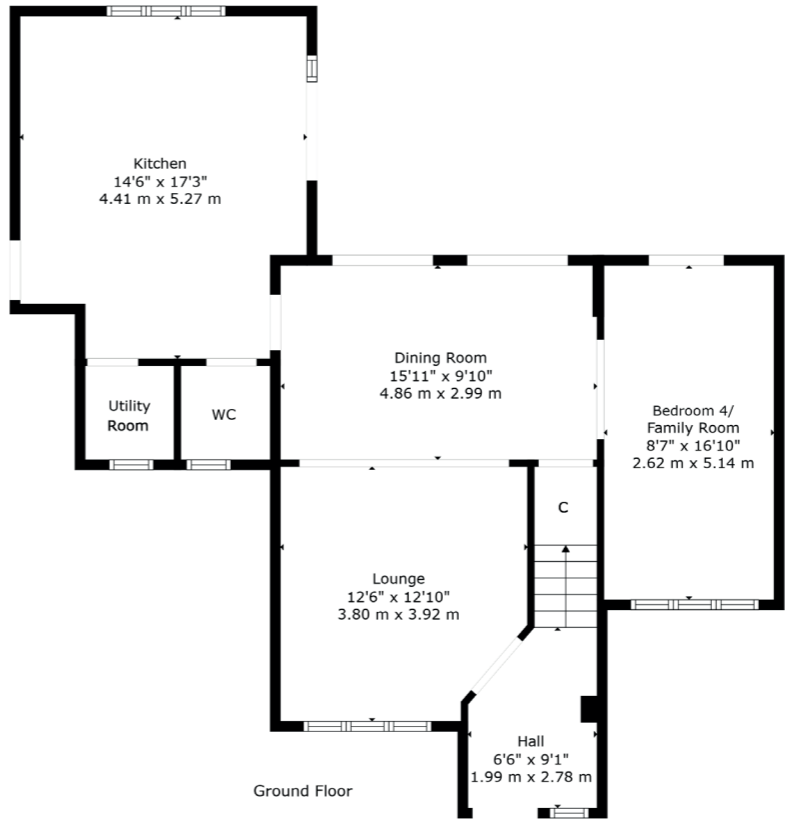
This modern detached villa is set within the highly popular and sought after Westacres Development. Set within large, landscaped garden grounds, the subjects are presented in impeccable condition throughout and would be ideal for a young growing family.

Carefully upgraded to an exceptional standard of finish throughout with fresh neutral decor with stylish and contemporary decor. Offering spacious accommodation, the rooms flow seamlessly from one to another, which in brief extends to welcoming entrance hallway, formal lounge open with dining room which leads to family room. Sociable dining kitchen, with large centre island and direct garden access, utility room and cloakroom/WC. The upper level provides lovely principal bedroom with fitted wardrobes and en-suite shower room, good sized second bedroom, third bedroom with fitted storage and contemporary family bathroom with co-ordinated tiling. Additional storage provided by way of attic space.

The garden grounds are a beautiful feature of the house which are expansive, manicured and landscaped with large sun terrace patio, lawn area completely private and backing onto mature woodland. Said gardens are established and retain a high degree of privacy and year-round interest. Additional purpose-built sunroom/home office and external lighting. The front offers Monoblock driveway providing ample vehicular parking.

The floor plan shall provide you with a detailed layout of this versatile and well laid out home; however, we recommend viewing to appreciate the space, versatility and convenient setting that is on offer.





The property is situated in the highly popular Westacres Development and is superbly located for nearby primary and secondary schooling. Mearns Cross Shopping Centre and Greenlaw Village are both a short distance away, and retail outlets, motorway, road and train links (Patterton Train Station) providing swift access to the city centre are within easy reach. There is a myriad of sport and leisure facilities available within the area and the property is also a short distance away from the countryside and equestrian facilities.

NM4640 | Sat Nav: 15 Kiloran Grove, Newton Mearns, G77 6WS

For the full home report visit www.corumproperty.co.uk

* All measurements and distances are approximate Floorplans are for illustration purposes and may not be to scale.



WE'RE **SOLD** ON
YOUR FUTURE



Corum Newton Mearns
134 Ayr Road, Newton Mearns, G77 6EG

Tel: 0141 639 5888

Email: n.mearns@corumproperty.co.uk

www.corumproperty.co.uk