



2/1, 32 SKIRVING STREET
SHAWLANDS

www.corumproperty.co.uk



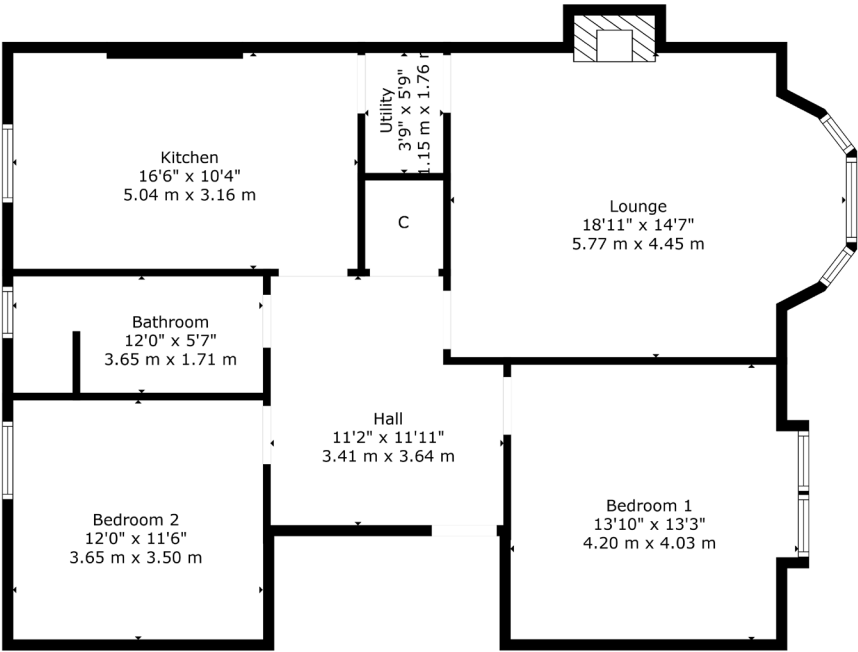
2 | BEDROOMS
1 | BATHROOM
1 | PUBLIC ROOM

Occupying a bright top floor position in the centre of Shawlands, this lovely home delivers exceptional accommodation and first-class finishes. The property is nearby Queen’s Park, an abundance of amenities and regular public transport options.

- Purpose built blonde stone tenement
- Bright top floor position in Shawlands
- Two double sized bedrooms
- Beautifully fitted dining kitchen
- Numerous period features retained
- Only 500 yards to Queen’s Park

Amenities

32 Skirving Street is on the doorstep of thriving shops, bars, coffee houses, bakeries and restaurants. A Morrisons, a Sainsbury’s, a Tesco and an M&S store are all within half a mile of the property. The fringe of Queen’s Park hosts a Farmers’ Market on the 1st and 3rd Saturday of each month whilst recreational space, tennis courts and football pitches are available within the park. Shawlands Civic Square is also nearby, designed to offer a destination for markets, dance, craft events, speakers and debate.



Sat Nav:
32 Skirving Street, Shawlands, G41 3AA

SS5079

*All measurements and distances are approximate.
Floorplans are for illustration purposes and may not be to scale.

For the full home report visit
www.corumproperty.co.uk



WE'RE **SOLD** ON
YOUR FUTURE



Corum Shawlands
247 Kilmarnock Road, Shawlands, G41 3JF

Tel: 0141 636 7588

Email: shawlands@corumproperty.co.uk

www.corumproperty.co.uk