



GROUND FLOOR CONVERSION

10 MARYWOOD SQUARE, STRATHBUNGO

www.corumproperty.co.uk



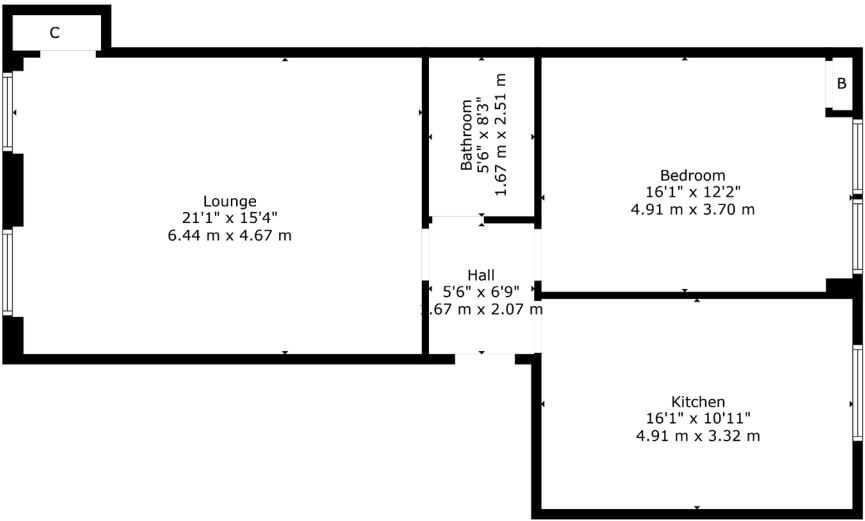
1 | BEDROOM
1 | SHOWER ROOM
1 | PUBLIC ROOM

Presented in superb order throughout, this ground floor conversion of a period townhouse is located in the heart of Strathbungo and offers communal gardens and private parking.

- Ground floor conversion
- Impressive living room
- Dining sized modern kitchen
- Double bedroom, modern shower room
- Tasteful décor
- Dedicated parking space

Amenities

10 Marywood Square is within walking distance of a diverse range of amenities including independent coffee shops, restaurants, bars and delicatessens. Extensive facilities are available at the Marks & Spencer store at Queen’s Park, the Morrisons store at Crossmyloof or the Sainsbury’s store on Darnley Road. Strathbungo is nearby Queens Park delivering nature trails, football pitches, tennis courts and a fortnightly farmers market. Pollokshields West and Queens Park train stations are within half a mile of the front door whilst regular bus services are available on nearby Pollokshaws Road.



Sat Nav:
10 Marywood Square, Strathbungo, G41 2BH

SS4086

*All measurements and distances are approximate.
Floorplans are for illustration purposes and may not be to scale.

For the full home report visit
www.corumproperty.co.uk



WE'RE **SOLD** ON
YOUR FUTURE



Corum Shawlands
247 Kilmarnock Road, Shawlands, G41 3JF

Tel: 0141 636 7588

Email: shawlands@corumproperty.co.uk

www.corumproperty.co.uk