



3/1, 26 TASSIE STREET

SHAWLANDS

www.corumproperty.co.uk



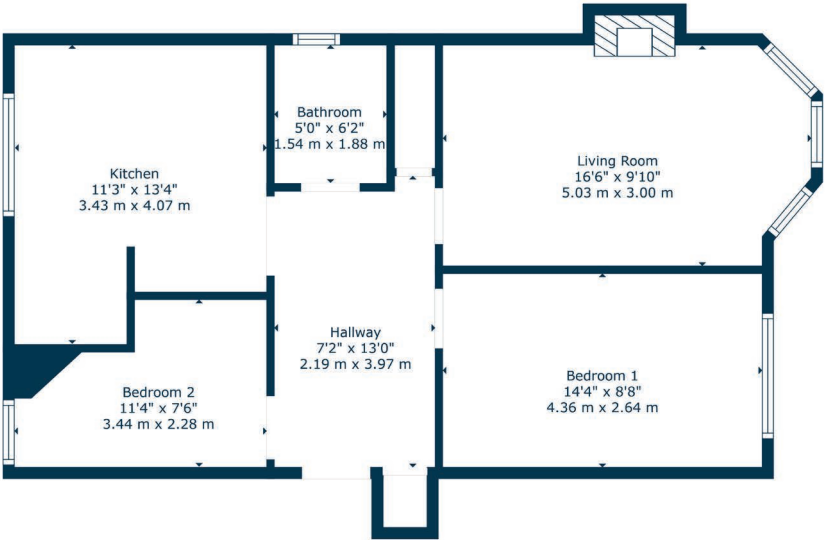
2 | BEDROOMS
1 | BATHROOM
1 | PUBLIC ROOM

A fantastic top floor flat, offering open aspects to front and rear, along with a modern specification and good room sizes.

- Top floor flat with aspects up Hector Road
- Contemporary finish throughout
- Large living room, dining sized kitchen
- Two good bedrooms
- Well-appointed bathroom
- GCH, DG, secure entry system

Amenities

26 Tassie Street is within walking distance of all Shawlands amenities including independent coffee houses, bakeries, restaurants, bars and delicatessens. Frequent public transport services are available locally with regular bus routes on Kilmarnock Road whilst Pollokshaws East train station is 500 yards from the front door.



Sat Nav:
3/1, 26 Tassie Street, Shawlands, G41 3QF

SS5101

*All measurements and distances are approximate.
Floorplans are for illustration purposes and may not be to scale.

For the full home report visit
www.corumproperty.co.uk



WE'RE **SOLD** ON
YOUR FUTURE



Corum Shawlands
247 Kilmarnock Road, Shawlands, G41 3JF

Tel: 0141 636 7588
Email: shawlands@corumproperty.co.uk

www.corumproperty.co.uk