



161C WELBECK CRESCENT

TROON

www.corumproperty.co.uk





2 | BEDROOMS

1 | BATHROOM

1 | PUBLIC ROOM

A generous one or two bedroom first-floor flat offering great potential with partial sea views and beautifully maintained south-east facing communal gardens. Featuring a well-presented communal close, a spacious reception hall with storage, a fitted kitchen, a bright sitting/dining room, and a shower room, this property is ready for refurbishment to create a fantastic coastal home.

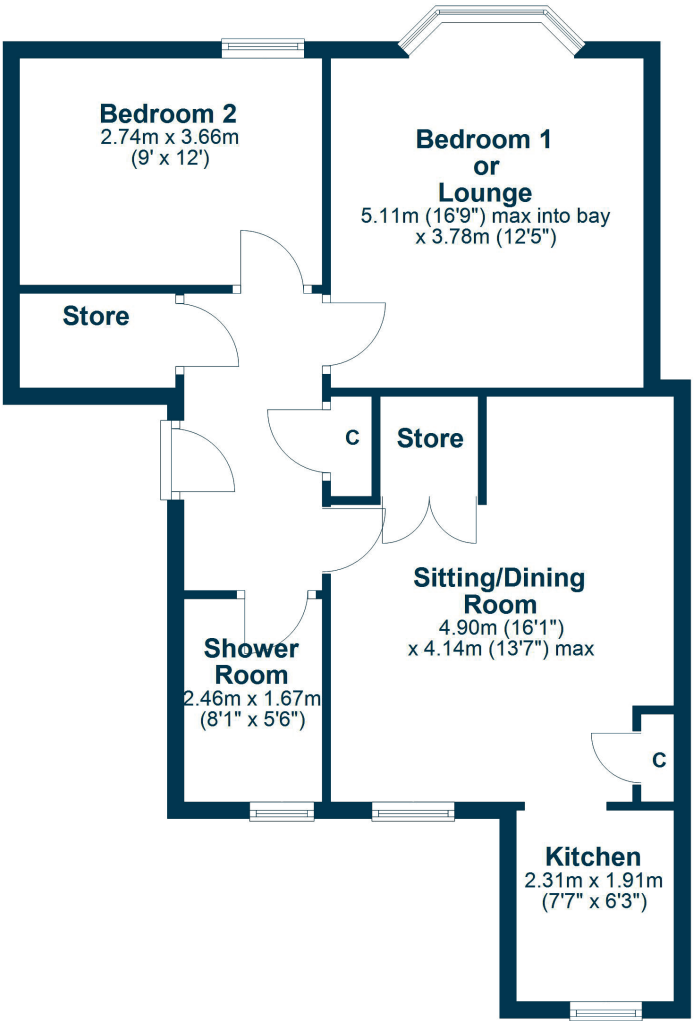
This delightful first-floor flat presents a wonderful opportunity to create a comfortable and stylish home, boasting partial sea views and access to immaculate south-east facing communal gardens.

Situated within a well-maintained building, the property benefits from a welcoming communal close leading into a generous reception hall complete with two handy storage cupboards.

Offering flexible accommodation, there are one or two double-sized bedrooms to suit your needs. The rear-facing fitted kitchen provides a practical space for cooking, while the spacious sitting room/dining room enjoys plenty of natural light, with views over the gardens towards the sea.

The accommodation is completed by a shower room featuring a three-piece suite, including a convenient walk-in shower cubicle with an electric shower. In need of some refurbishment, this flat offers great potential to create a comfortable home in a sought-after location.





Troon offers a lifestyle of unparalleled leisure and convenience. Whether it's a morning jog along the sandy shores, a round of golf at the world famous Royal Troon Golf Club, or exploring the scenic coastal trails, opportunities for recreation and relaxation are endless. Moreover, excellent transport links via road and rail ensure effortless access to Glasgow and beyond, making it a perfect primary home or pied-a-terre holiday home.

TR2022 | Sat Nav: 161 Welbeck Crescent, Troon, KA10 6AP

For the full home report visit www.corumproperty.co.uk

* All measurements and distances are approximate Floorplans are for illustration purposes and may not be to scale.



WE'RE **SOLD** ON
YOUR FUTURE



Corum Troon
29 Portland Street, Troon, KA10 6AA

Tel: 01292 310 010

Email: troon@corumproperty.co.uk

www.corumproperty.co.uk