



**3/1, 21 SINCLAIR DRIVE**  
BATTLEFIELD

[www.corumproperty.co.uk](http://www.corumproperty.co.uk)

  
c o r u m



2 | BEDROOMS  
1 | BATHROOM  
1 | PUBLIC ROOM

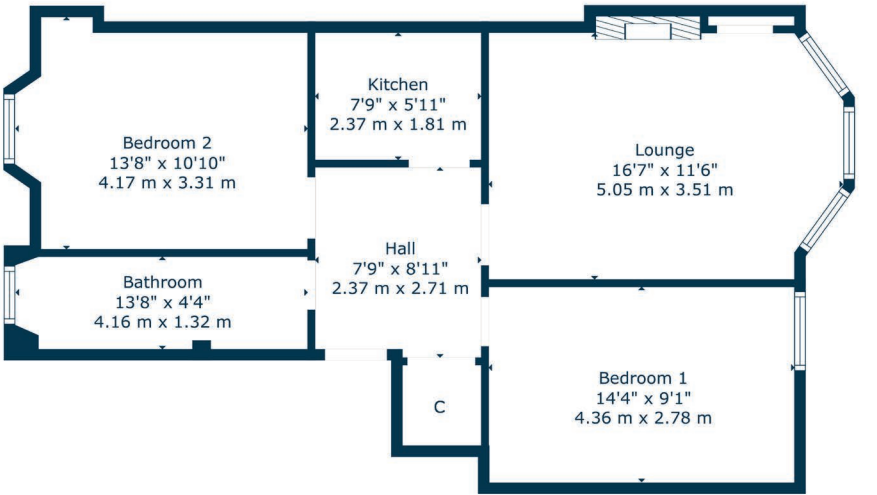
A well presented and spacious top floor flat set in the heart of Battlefield, close to an array of thriving amenities and transport links.

- Top floor flat
- Impressive bay window lounge
- 2 double bedroom
- Modern kitchen and shower room
- GCH, DG, secure entry system
- Great location in the heart of Battlefield

Amenities

21 Sinclair Drive is within walking distance of Battlefield Road where coffee shops, restaurants, bars and delicatessens can be found. More extensive amenities are available at the recently opened Marks and Spencers store in Battlefield, the Morrisons store at Crossmyloof, and the Tesco metro store at the Battlefield Monument.

Queens Park is within half a mile of the front door providing nature walks, all weather football pitches, tennis courts and a fortnightly market. Public transport links are also close by with regular bus routes into the city centre on Sinclair Drive itself whilst the locally railway station at Mount Florida is approximately half a mile away.



Sat Nav:  
3/1, 21 Sinclair Drive, Battlefield, G42 9PR

SS5105

\*All measurements and distances are approximate.  
Floorplans are for illustration purposes and may not be to scale.

For the full home report visit  
[www.corumproperty.co.uk](http://www.corumproperty.co.uk)



WE'RE **SOLD** ON  
YOUR FUTURE



Corum Shawlands  
247 Kilmarnock Road, Shawlands, G41 3JF

**Tel:** 0141 636 7588

**Email:** shawlands@corumproperty.co.uk

[www.corumproperty.co.uk](http://www.corumproperty.co.uk)