



11A BRIARHILL ROAD
PRESTWICK

www.corumproperty.co.uk





1 | BEDROOM

1 | BATHROOM

1 | PUBLIC ROOM

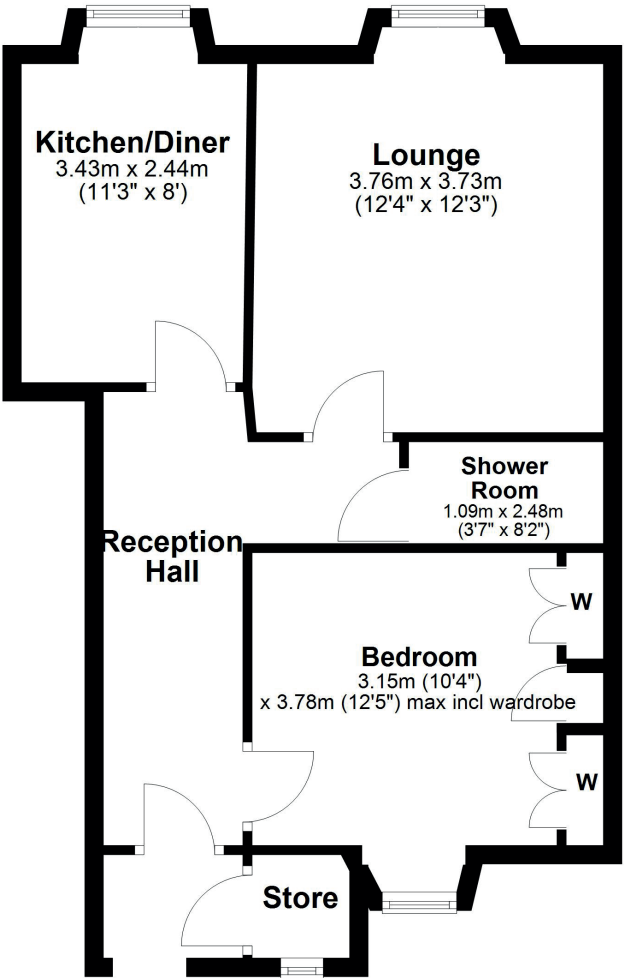
Set on the first floor of a traditional red sandstone building, this delightful one-bedroom flat offers a bright and airy living experience. With its private main door entrance, handy external store that could double as a utility space, and a generous layout featuring a reception hall, lounge, kitchen-diner, modern shower room, and double bedroom, it's a perfect blend of practicality and charm.

Flat 11a, Briarhill Road is a charming first-floor apartment bathed in natural light and ideally positioned in the highly desirable seaside town of Prestwick.

The property has a private main door entrance leading into a welcoming reception hall that flows easily through the home. The lounge offers a warm and inviting space for relaxing or entertaining, while the adjacent kitchen-dining area is perfect for casual meals or hosting friends. A fantastic external store, accessible from the property at the entrance door, provides superb extra space and could easily be set up as a utility room, laundry area, or just as additional storage. Completing the layout is a modern shower room with quality tiling, three-piece suite to include a walk-in shower, and a generous double sized bedroom with a wall of built-in wardrobes, overlooking the well kept communal gardens. Combining smart design with laid-back coastal character, this flat is both practical and very appealing.

The communal gardens are delightful and features an expansive lawn area, perfect for summer BBQs or sun bathing in. The entrance to the flat is round the back and up an external staircase.





The location of Briarhill Road makes day-to-day living exceptionally convenient. Sainsbury's with an in-store Argos and Starbucks is just over half a mile away on Ayr Road, with Aldi and a Tesco Express all within easy reach for everyday essentials.

For larger shopping trips, Heathfield Retail Park is only a short drive away, offering big-name stores, supermarkets, and leisure facilities.

Prestwick's beachfront lies just a short walk or drive to the west, where you can enjoy stunning coastal walks, fresh sea air and beautiful views of the Firth of Clyde.

AY5367 | Sat Nav: 11a Briarhill Road, Prestwick, KA9 1HZ

For the full home report visit www.corumproperty.co.uk

* All measurements and distances are approximate Floorplans are for illustration purposes and may not be to scale.



WE'RE **SOLD** ON
YOUR FUTURE



Corum Ayr
10 Beresford Terrace, Ayr, KA7 2EG

Tel: 01292 880 888

Email: ayr@corumproperty.co.uk

www.corumproperty.co.uk