



14 FAIRWAY VIEW

PRESTWICK

www.corumproperty.co.uk





4 | BEDROOMS

3 | BATHROOMS

2 | PUBLIC ROOMS

A luxury and executive family villa with a wealth of spacious accommodation, gorgeous south facing rear gardens and a double garage, set in the popular seaside town of Prestwick.

Fairway View is an executive estate within the popular seaside town of Prestwick, constructed by Miller Homes and adjacent to St Cuthberts Golf Course. Number 14 is an impressive linked-detached family villa, with a gorgeous double-fronted facade, privacy to the front and beautifully landscaped south-facing gardens at the rear. There are six principal apartments, a four piece family bathroom and two en suite shower rooms, a fantastic master bedroom suite with a separate dressing room, neutrally decorated living spaces, an incredible open plan dining kitchen and family room at the rear, and ample storage throughout. There is a double garage with light and power, ample off road parking, quality fixtures and fittings and a range of first class amenities, all within walking distance.

In more detail, the internal accommodation extends to an impressive entrance hallway, a downstairs WC, an under stairs storage cupboard, a spacious bay windowed lounge, an open plan family room into a dining area with French doors out to the garden and a luxury fitted gloss kitchen, with a breakfast bar and a separate door access out to the garden. On the upper floor there is storage and loft access off the landing, a four piece family bathroom suite with a separate shower cubicle, a master bedroom suite with fitted wardrobes, a separate dressing room and an en suite shower room, a double bedroom with fitted wardrobes and an en suite shower room, a double bedroom with fitted wardrobes and an additional bedroom.

Externally there are gardens to the front, which include lawn and decorative aggregate. There are monoblock and paved pathways, with a monoblock double driveway leading to the double garage, which has light and power. There is a fully enclosed and well-tended south-facing rear garden, which has a manicured lawn, a paved patio area, decorative aggregate, well-stocked shrub borders and excellent privacy.

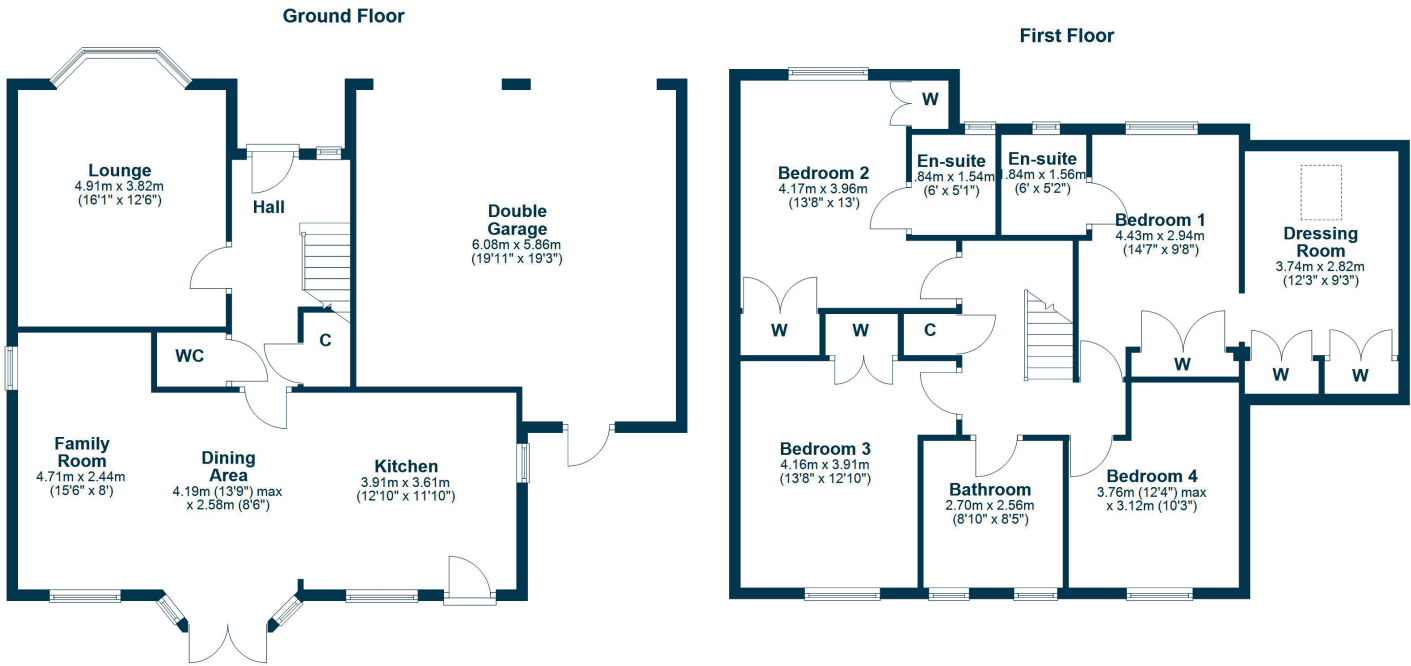












Fairway View is a highly sought after residential address due to its close proximity to the amenities of Prestwick town centre, the Heathfield Retail Park and local schools. The town centre provides a plethora of boutique shops, bars and restaurants, while there are excellent road and rail links to Glasgow. Prestwick also provides a comprehensive range of sporting and recreational facilities, including golf courses, a vibrant sailing club, tennis and bowling clubs and an indoor swimming pool complex.

AY5370 | Sat Nav: 14 Fairway View, Prestwick, KA9 2SZ

For the full home report visit www.corumproperty.co.uk

* All measurements and distances are approximate Floorplans are for illustration purposes and may not be to scale.



WE'RE **SOLD** ON
YOUR FUTURE



Corum Ayr
10 Beresford Terrace, Ayr, KA7 2EG

Tel: 01292 880 888

Email: ayr@corumproperty.co.uk

www.corumproperty.co.uk