



FLAT 4, 148 MILNGAVIE ROAD
BEARSDEN

www.corumproperty.co.uk





1 | BEDROOM

1 | BATHROOM

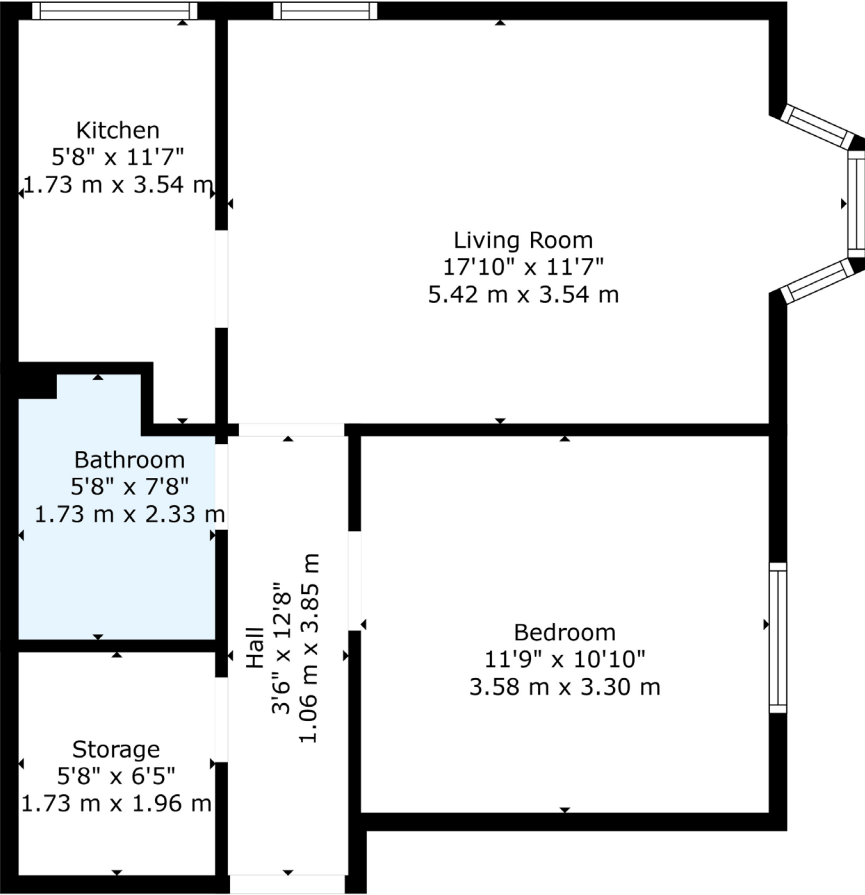
1 | PUBLIC ROOM

Located in the ever-popular Hillfoot district of Bearsden, this good sized one-bedroom first floor flat offers an excellent opportunity for a first-time buyer, investor or downsizer seeking a home in a highly convenient setting. Just a short walk from Hillfoot train station and within easy reach of a wide range of local shops, cafés, and amenities, the property combines practical living with a superb location.

The accommodation is well laid out and comprises a welcoming reception hallway with generous walk-in storage, a bright formal lounge with an attractive bay window and ample space for dining, a fitted kitchen, a double bedroom, and a bathroom. The property is further enhanced by double glazing, and gas central heating.

Externally, there is plentiful residents' and visitors' parking, making it a highly practical choice for modern living.





The location is a particular highlight, with Bearsden and Milngavie offering a full range of amenities including supermarkets such as Marks & Spencer, Tesco, and Asda, along with specialist shops, restaurants, and cafés at Bearsden Cross. The area also boasts excellent leisure options with several gyms, golf clubs, and scenic outdoor spaces nearby. Regular rail services from Hillfoot provide direct access to Glasgow's West End and City Centre, with easy onward links beyond.

BD3946 | Sat Nav: 148 Milngavie Road, Bearsden, G61 3EA

For the full home report visit www.corumproperty.co.uk

* All measurements and distances are approximate Floorplans are for illustration purposes and may not be to scale.



WE'RE **SOLD** ON
YOUR FUTURE



Corum Bearsden
1 Canniesburn Toll, Bearsden, G61 2QU

Tel: 0141 942 5888

Email: bearsdenenq@corumproperty.co.uk

www.corumproperty.co.uk