



23 BARMORE CRESCENT
BISHOPTON

www.corumproperty.co.uk





3 | BEDROOMS

3 | BATHROOMS

1 | PUBLIC ROOM

A charming three-bedroom end terrace, built by Persimmon, upgraded beyond the original specification.

This beautifully presented three-bedroom end terrace home, built by Persimmon, is situated in a quiet and desirable pocket just off Barmore Crescent. Offering modern living spaces, stylish interiors, and a private landscaped garden, this property is perfect for families or professionals.

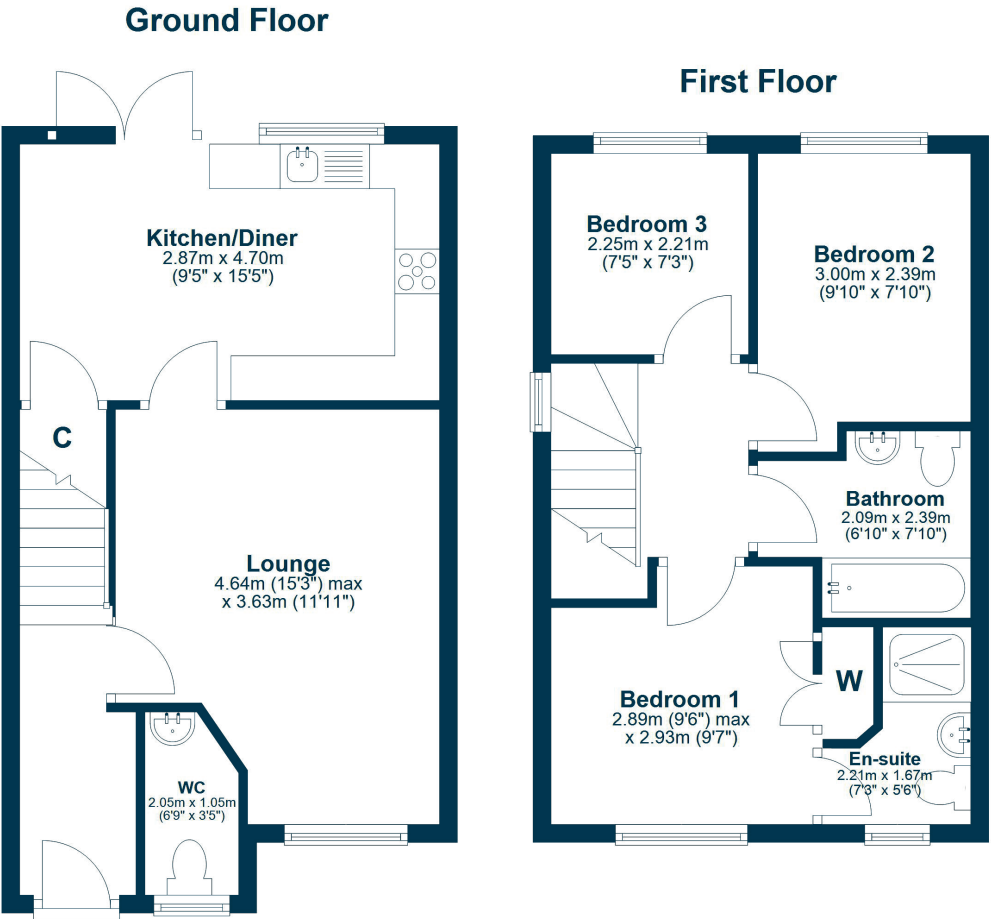
Entry into to a welcoming entrance hall leading to the spacious main lounge, the open-plan kitchen/diner is fitted with contemporary units and offers ample space for dining, with French doors opening onto the garden, ideal for indoor-outdoor living. A convenient guest W.C. completes the ground-floor accommodation.

Upstairs, you'll find three well-proportioned bedrooms, including a generous main bedroom with fitted wardrobes and a private en-suite shower room. The remaining two bedrooms are perfect for children, guests, or a home office, while the modern family bathroom serves the household with ease.

This home boasts a high-quality finish throughout with upgrades added during build, complete with neutral décor and modern fixtures. Key features include French doors to the garden, fitted wardrobes in the main bedroom, an en-suite for added convenience, and a well-appointed kitchen with integrated appliances. The property also benefits from allocated parking at the front.

Outside, the landscaped garden offers a fantastic space for relaxation and play, complete with decking for outdoor seating and a play area and laid lawn. The end-terrace position provides extra privacy, while the allocated parking ensures hassle-free access.





Bishopton is a popular village in West Renfrewshire with ongoing extensive development at Dargavel Village with the modern Dargavel primary school and local shops. The original village contains Bishopton primary school and secondary schooling can be found in nearby Erskine. Bishopton is also well placed for accessing Glasgow International Airport with direct access to the M8 motorway which allows for travel to neighbouring towns as well as INTU Retail Park, Glasgow city centre and the A737 Howwood bypass which allows for travel to North Ayrshire. There are several local shops, Bishopton rugby club, and Erskine Golf Club.

BW2701 | Sat Nav: 23 Barmore Crescent, Bishopton, PA7 5QU

For the full home report visit www.corumproperty.co.uk

* All measurements and distances are approximate Floorplans are for illustration purposes and may not be to scale.



WE'RE **SOLD** ON
YOUR FUTURE



Corum Bridge of Weir
2 Windsor Place, Main Street, Bridge Of Weir, PA11 3AF

T: 01505 691 400

E: bridgeofweir@corumproperty.co.uk

www.corumproperty.co.uk