



2/2 41 ELIE DRIVE

BISHOPTON

www.corumproperty.co.uk



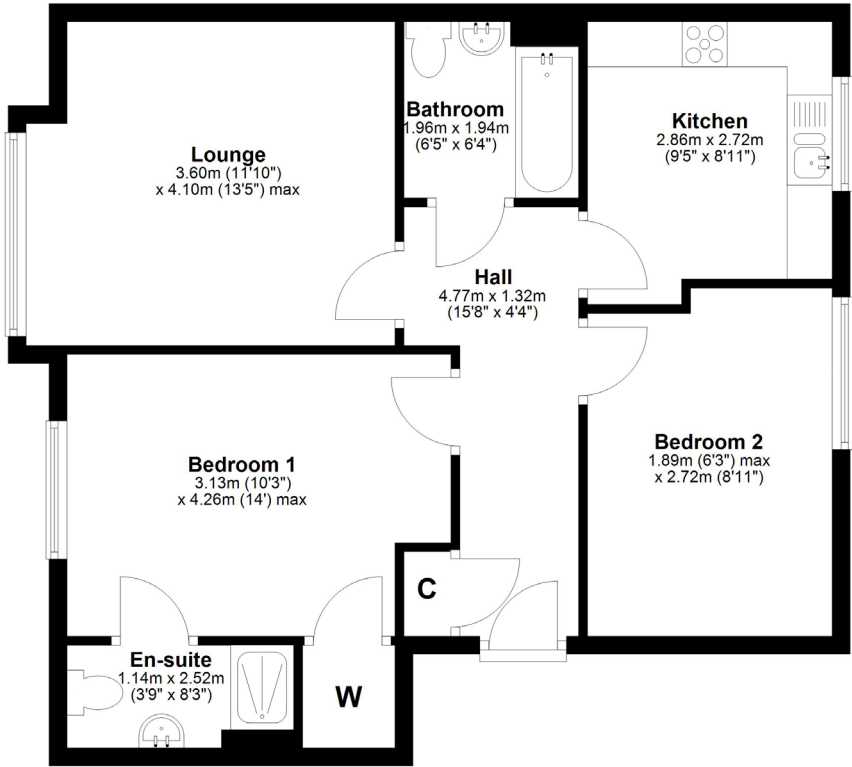
2 | BEDROOMS
2 | BATHROOMS
1 | PUBLIC ROOM

A stylish and beautifully presented top floor apartment positioned to the top of Dargavel village with convenient access to the rail line.

- Modern top floor apartment
- Separate lounge and kitchen
- Principal bedroom with fitted wardrobe and ensuite
- Second double bedroom
- Modern bathroom
- Two allocated parking, guest parking spaces
- Security entry system, gas heating, double glazing

Amenities

Bishopton is a popular village in West Renfrewshire with direct access to the M8 motorway allowing commuting to Glasgow in approximately 28 minutes. The location is only four miles from the Erskine Bridge allowing access to the northwest of Glasgow and the stunning Loch Lomond and Trossachs National Park. The rail station has park and ride facilities and regular services to both Inverclyde and Glasgow city centre. Dargavel Village features a modern shopping outlet and Dargavel primary school. The original village amenities include Bishopton primary school, community centre, library, and leisure centre. There are local rugby, tennis, football and golf clubs, local shops, a village pub, and several food outlets. Secondary schooling can be found in nearby Erskine.

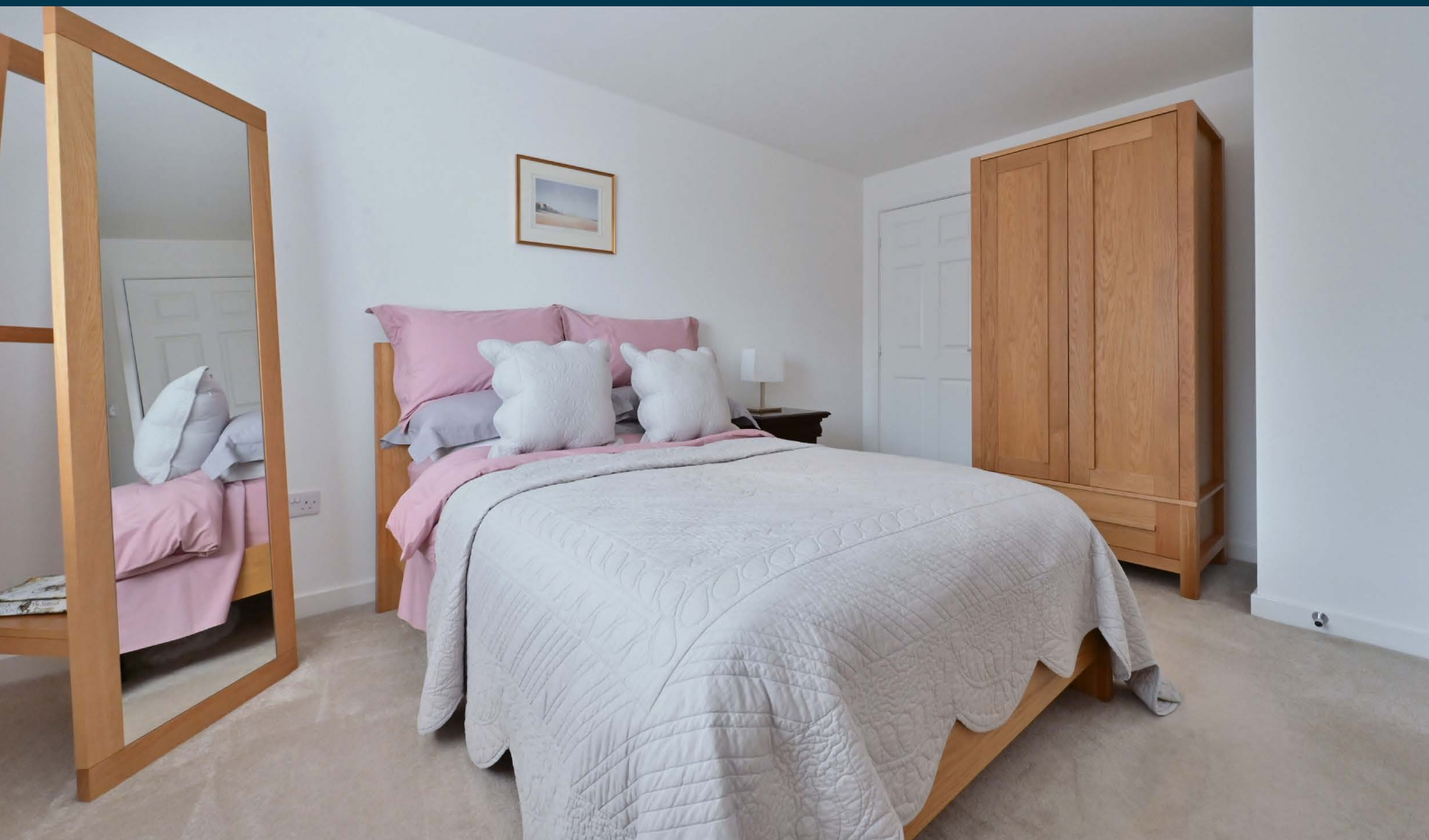


Sat Nav:
41 Elie Drive, Bishopton, PA7 5RD

BW2696

*All measurements and distances are approximate.
Floorplans are for illustration purposes and may not be to scale.

For the full home report visit
www.corumproperty.co.uk



WE'RE **SOLD** ON
YOUR FUTURE



Corum Bridge of Weir
2 Windsor Place, Main Street, Bridge Of Weir, PA11 3AF

T: 01505 691 400

E: bridgeofweir@corumproperty.co.uk

www.corumproperty.co.uk