



12 MAIN ROAD

FAIRLIE

www.corumproperty.co.uk





5 | BEDROOMS

3 | BATHROOMS

2 | PUBLIC ROOMS

This fabulous traditional detached bungalow is set within a substantial corner plot with the property providing stunning views over the Firth of Clyde & up to local countryside. A home with flexible and good-sized family accommodation in the picturesque coastal village of Fairlie. For the commuter there is the local train station and good road networks.

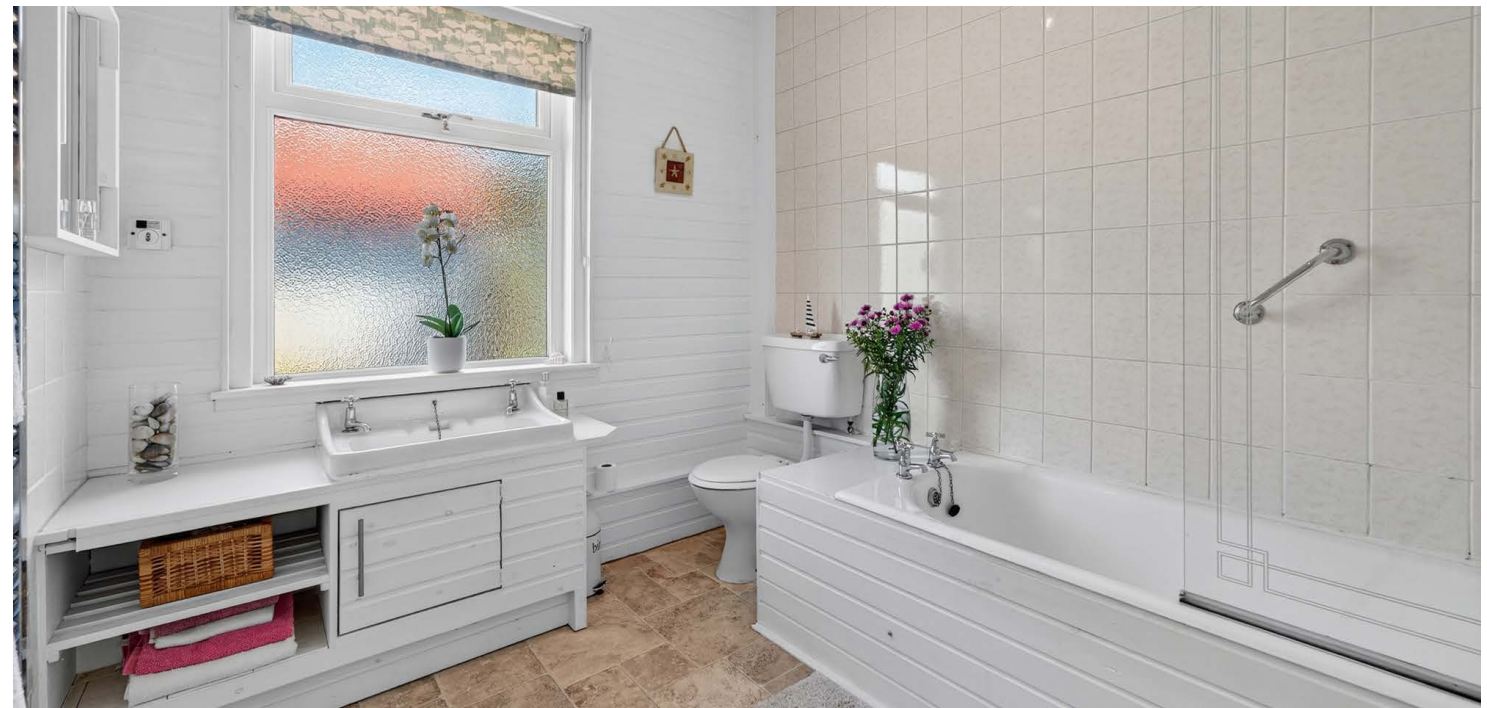
12 Main Road is a wonderful traditional detached bungalow which is located in the lovely village of Fairlie. The views from the property are just stunning and go up to the local countryside and out over the Firth of Clyde. The accommodation is both flexible and a good size whilst the property is set within an extensive corner plot.

The excellent accommodation on offer extends to the entrance vestibule leading into the bright welcoming reception hallway, lounge with lovely views over the gardens and out to the estuary, two double bedrooms, en suite shower room, formal dining room, kitchen which is set to the rear and family bathroom. On the upper level there can be found three bedrooms and shower room. The property has gas central heating and double glazing. There are great garden grounds to the property along with the driveway and garage. Early viewing is highly recommended to appreciate the accommodation and location on offer.

***Please note there is no guarantee that all appliances are in full working order.**





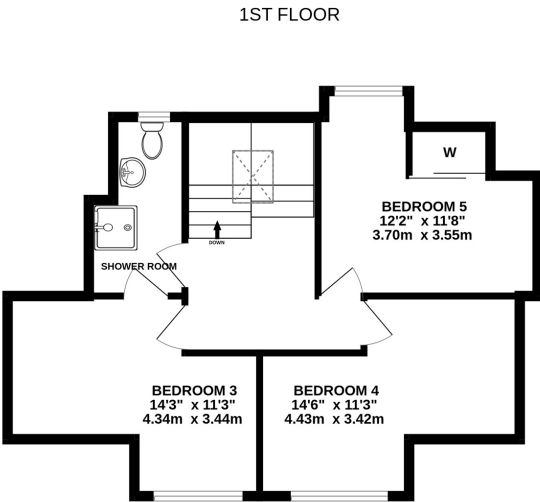
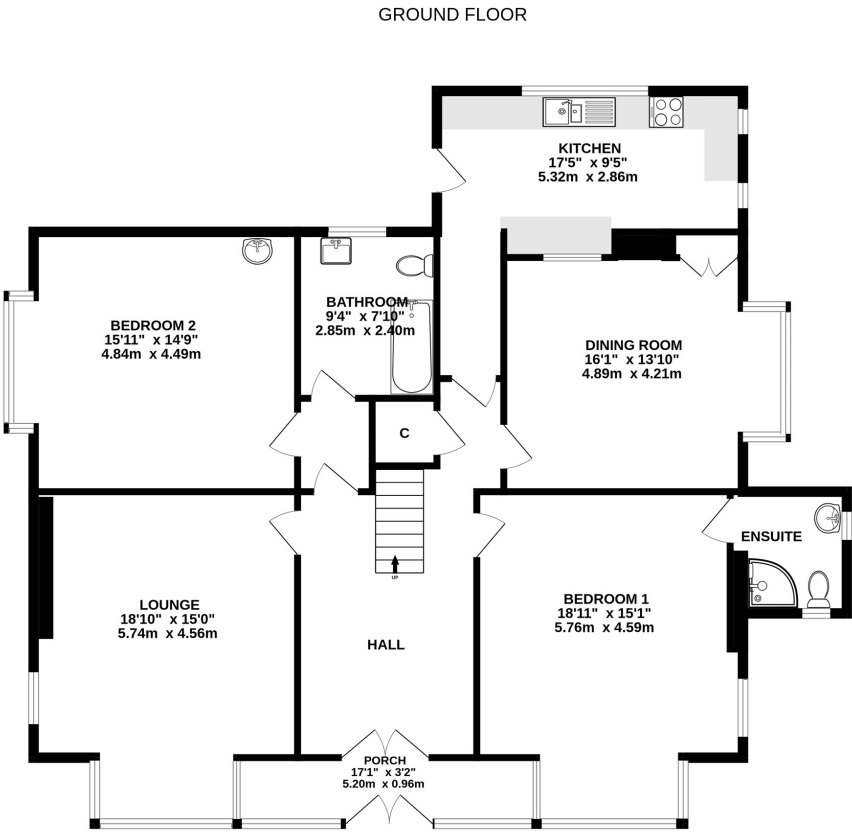












Fairlie is a popular small village located on the Clyde Coast, south of Largs. The village has many amenities which include a primary school, Fairlie Primary, local bar / restaurant, shopping facilities and a bowling club. Fairlie is located within close proximity to Kelburn Country Park and Largs Marina and it is within the catchment area for those who have children attending Largs Academy Campus. The village is also well positioned for accessing all major road networks and there is a local train station which provides a frequent mainline service to Largs and Glasgow.

LA2103 | Sat Nav: 12 Main Road, Fairlie, KA29 0DP

For the full home report visit www.corumproperty.co.uk

* All measurements and distances are approximate Floorplans are for illustration purposes and may not be to scale.



WE'RE **SOLD** ON
YOUR FUTURE



Corum Largs
66 Main Street, Largs, KA30 8AL

Tel: 01475 675 001

Email: largs@corumproperty.co.uk

www.corumproperty.co.uk