



# 10 WATERS EDGE

SKELMORLIE

[www.corumproperty.co.uk](http://www.corumproperty.co.uk)







**2 | BEDROOMS**

**1 | BATHROOM**

**1 | PUBLIC ROOM**

**This lovely modern top floor apartment offers quite wonderful views out over the Firth of Clyde that takes in passing cruise ships, the local ferry, and some sea life. Skelmorlie is a coastal village with local amenities and Largs the larger town is just along the coastal road.**

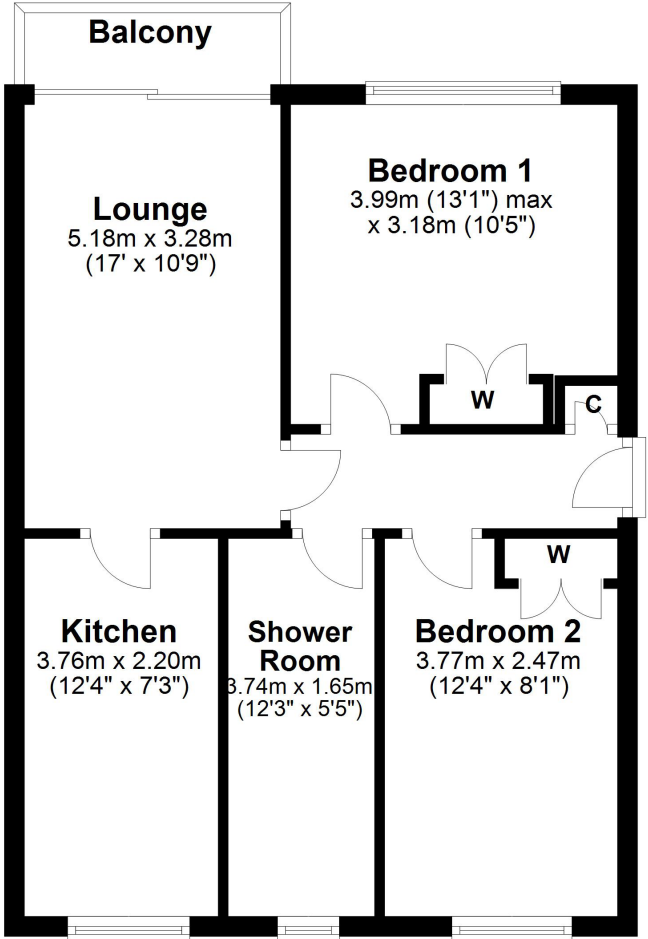
Water's Edge is a fabulous modern development which is set on the shoreside in the coastal village of Skelmorlie. The apartment has great views over and along the Firth of Clyde and just a short distance from the ferry terminal to the Isle of Bute.

The excellent accommodation extends to a bright reception hallway which leads to all the main rooms. The lounge is a fabulous space where you can watch the sea traffic go by or just enjoy the exceptional view. The balcony is accessed from the lounge and is the perfect space for a lazy coffee or glass of wine watching the sunset. A luxury fitted kitchen which is accessible from the lounge. There are two lovely bedrooms which are brightly decorated to provide a relaxing ambient space. To further complement the apartment there is a modern shower room. The property has gas heating and double glazing. The communal entrance and communal reception areas have been upgraded to provide a nice welcome to the building. There are communal grounds which lead to the shorefront and what an area to enjoy the view. There is residents parking. Early viewing is highly recommended to appreciate the accommodation and location on offer.









Skelmorlie and neighbouring Wemyss Bay offer a range of amenities, recreational facilities, and swift travel links to Glasgow via bus, train and the upgraded road network. There is also a regular ferry service to the Island of Bute. Skelmorlie's amenities include primary schooling, a golf course, a bowling club, as well as restaurants and hotels nearby. 4 miles to the south, the bustling holiday town of Largs has a host of amenities as well as a regular service to the beautiful island of Cumbrae.

**LA2108** | Sat Nav: 10 Waters Edge, Skelmorlie, PA17 5EB

For the full home report visit [www.corumproperty.co.uk](http://www.corumproperty.co.uk)

\* All measurements and distances are approximate Floorplans are for illustration purposes and may not be to scale.





WE'RE **SOLD** ON  
YOUR FUTURE



Corum Largs  
66 Main Street, Largs, KA30 8AL

**Tel:** 01475 675 001

**Email:** [largs@corumproperty.co.uk](mailto:largs@corumproperty.co.uk)

[www.corumproperty.co.uk](http://www.corumproperty.co.uk)