



21 CUNNINGHAM DRIVE
GIFFNOCK

www.corumproperty.co.uk





2 | BEDROOMS

1 | BATHROOM

1 | PUBLIC ROOM

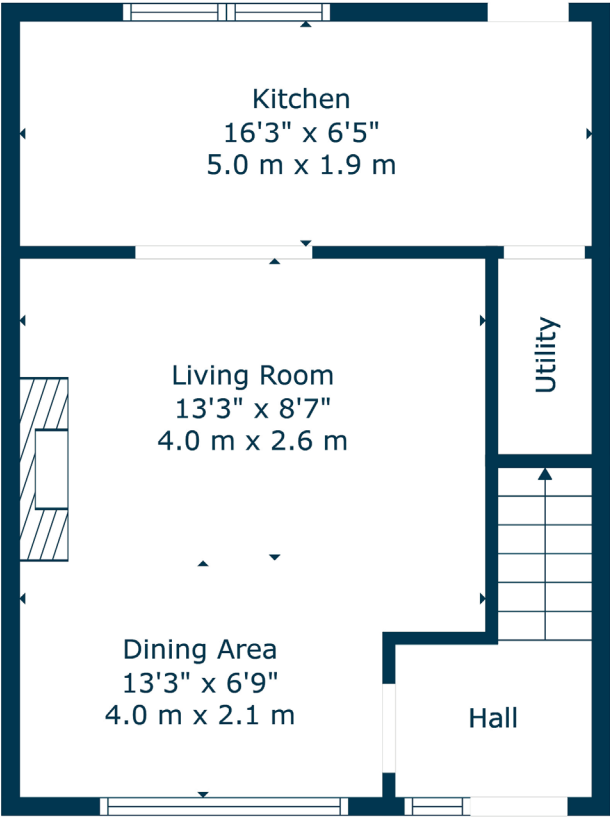
Beautifully presented mid terraced villa enjoying an ever popular Giffnock location.

This lovely mid terraced villa enjoys a quiet yet highly convenient location within the sought after suburb of Giffnock. Set within private garden grounds and presented in walk in condition throughout, the subjects offer an easy move to the local marketplace.

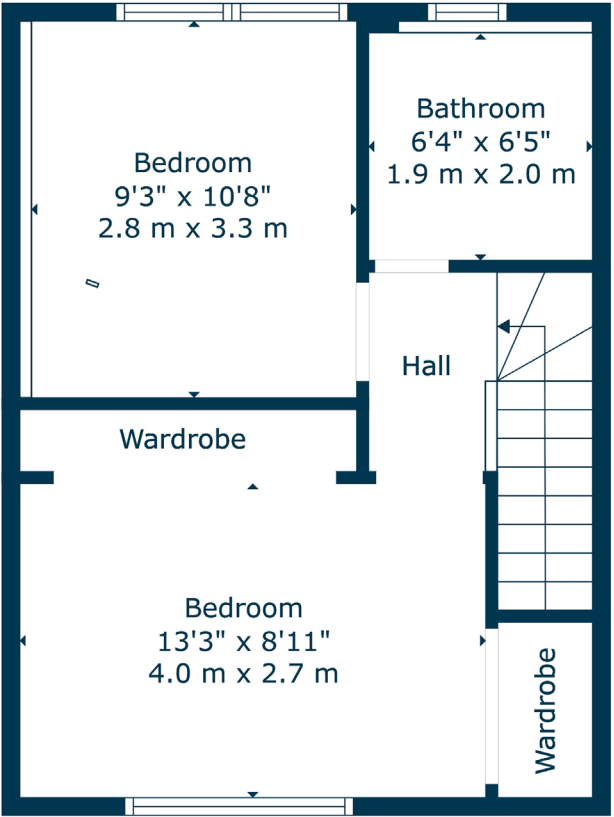
The ground floor accommodation extends to entrance hallway, spacious lounge with feature fireplace, modern fitted kitchen with a range of wall and base mounted units with access to under stair storage and garden grounds at rear. Upstairs gives access to generous principal bedroom with fitted storage, second good double bedroom with fitted storage and contemporary bathroom with overhead shower. The specification of the property includes a system of gas central heating, double glazing and the property is well presented in modern colour schemes throughout. Additional storage provided by way of attic space.

Externally the property is set within great sized, easily maintained garden grounds with raised decking area. Gardens are secure and fully enclosed and offer scope for further extension (subject to planning). Pedestrian access to front.





Floor 1



Floor 2

Giffnock continues to be one of the most desirable residential suburbs on Glasgow's south side. A haven for young growing families, the district is synonymous with some of the best schooling in the West of Scotland. Moreover there are excellent transport links via bus and train close at hand, in addition to local motorway links (M77/M8) providing swift access to the city centre and Ayrshire. There are two train stations within close proximity, Giffnock and Muirend Train Station. There are numerous independent shops, restaurants and delicatessens only a short walk away. An abundance of sports and leisure facilities are available within East Renfrewshire including Puregym, Nuffield Health Gym, David Lloyd Sports Club, Whitecraigs Golf Club, Giffnock and Whitecraigs Tennis Clubs and Rouken Glen Park.

NM4647 | Sat Nav: 21 Cunningham Drive, Giffnock, G46 6EW

For the full home report visit www.corumproperty.co.uk

* All measurements and distances are approximate Floorplans are for illustration purposes and may not be to scale.



WE'RE **SOLD** ON
YOUR FUTURE



Corum Newton Mearns
134 Ayr Road, Newton Mearns, G77 6EG

Tel: 0141 639 5888

Email: n.mearns@corumproperty.co.uk

www.corumproperty.co.uk