



28 HARVIE AVENUE

NEWTON MEARNS

www.corumproperty.co.uk





5 | BEDROOMS

3 | BATHROOMS

1 | PUBLIC ROOM

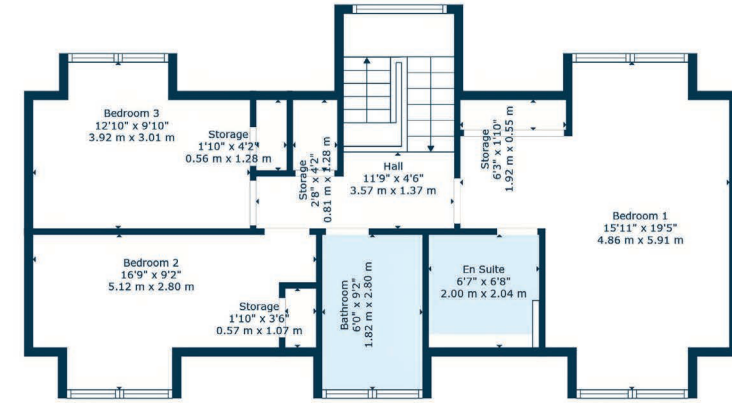
A beautifully refurbished detached bungalow within a much-admired Newton Mearns location.

Corum are delighted to present to the market this traditional detached bungalow that has been painstakingly refurbished, redesigned and extended circa 2019. The house delivers an exceptional level of finish inside, and out. Some notable features include a high-performance gas central heating system, double glazed windows and composite doors, security alarm system and an upgraded interior throughout.

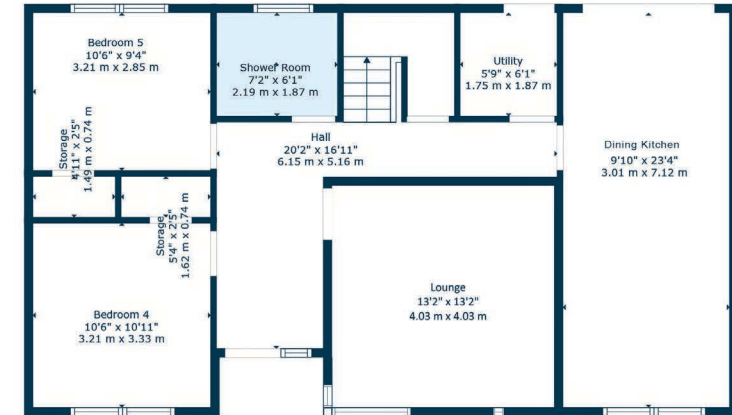
Traditional reception hallway with generous storage provided, principal lounge with feature corner window, two downstairs double bedrooms, both with storage and option to utilise as additional public rooms, contemporary fitted downstairs shower room, large dual aspect dining kitchen fitted with a full range of integrated appliances and bi-fold doors to gardens and the ground floor is completed by a separate utility/ laundry room. Feature staircase with large window at mid-point gives access to the upper landing with storage leading to dual aspect principal bedroom with built-in contemporary robe system and en-suite shower room, two further double bedrooms, both with storage and beautifully finished family bathroom with separate shower.

The garden grounds are exceptional by virtue of the generous circulation space, level layout and horseshoe driveway offering parking for multiple vehicles. External PIR security lighting and camera system. Detached double garage with remote control roller door system. Fitted with power and light. All external soffits and downpipes have been replaced.





Floor 2



Floor 1



Situated within a highly sought after pocket of Newton Mearns, the property is superbly placed for a wide range of amenities and indeed nationally recognised schooling. A wide variety of restaurants, supermarkets and retailers can be found at the nearby Mearns Cross Shopping Centre and Greenlaw Village, and there are a range of sports and leisure activities found within the district including parks, health clubs, gyms and golf courses. Excellent local transport links providing swift access to the city centre and beyond are also close at hand with Whitecraigs Station being the nearest.

NM4654 | Sat Nav:28 Harvie Avenue, Newton Mearns, G77 6LQ

For the full home report visit www.corumproperty.co.uk

* All measurements and distances are approximate Floorplans are for illustration purposes and may not be to scale.



WE'RE **SOLD** ON
YOUR FUTURE



Corum Newton Mearns
134 Ayr Road, Newton Mearns, G77 6EG

Tel: 0141 639 5888

Email: n.mearns@corumproperty.co.uk

www.corumproperty.co.uk